



### Mini-Com® Inserts

- Compatible with classic and executive faceplate frames
- Front releasable
- Accept Mini-Com® Modules for STP and UTP, fiber optic, and audio/video, which snap in and out for easy moves, adds, and changes



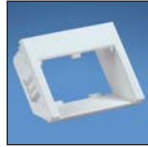
CHS2IW-X



CHS2SIW-X



CHF2IW-X



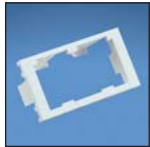
CHSRE2IW-X



CHS1SIW-X



CHB2IW-X



CHF2MIW-X



CHB2MIW-X



CHLS2SIW-X

| Part Number       | Part Description  | Color‡    | Std. Pkg. Qty. | Std. Ctn. Qty. |
|-------------------|---|-----------|----------------|----------------|
| <b>CHS2IW-X</b>   | Two module space, 1/2 size, sloped insert accepts two Mini-Com® Modules.  | Off White | 10             | 50             |
| <b>CHS2SIW-X</b>  | Two module space, 1/2 size, sloped shuttered insert accepts two Mini-Com® Modules. Shutters are spring loaded and rotate out of the way for cable connections. Not suitable for use with any audio/video or fiber connector module that protrudes beyond the face of the insert.  | Off White | 10             | 50             |
| <b>CHF2IW-X</b>   | Two module space, 1/2 size, flat insert accepts two Mini-Com® Modules.  | Off White | 10             | 50             |
| <b>CHSRE2IW-X</b> | Two module space, 1/2 size, 30° sloped recessed insert accepts two Mini-Com® Modules.   | Off White | 10             | 50             |
| <b>CHS1SIW-X</b>  | One module space, 1/2 size, sloped shuttered insert accepts one Mini-Com® Module. Not suitable for use with any audio/video or fiber connector module that protrudes beyond the face of the insert.   | Off White | 10             | 50             |
| <b>CHB2IW-X</b>   | 1/2 blank insert. Reserves space for future upgrades.   | Off White | 10             | 50             |
| <b>CHF2MIW-X</b>  | Two module space, 1/3 size, flat insert accepts two Mini-Com® Modules.  | Off White | 10             | 50             |
| <b>CHB2MIW-X</b>  | 1/3 blank insert. Reserves space for future upgrades.   | Off White | 10             | 50             |
| <b>CHLS2SIW-X</b> | Sloped module insert with protective shutters and label/label cover accepts up to two Mini-Com® Modules and accommodates up to 1/2 of a single gang bezel. Shutters are spring loaded and rotate out of the way for cable connections. Depth to rear modules: 16.5mm. Not suitable for use with any audio/video or fiber connector module that protrudes beyond the face of the insert. | Off White | 10             | 50             |

‡For other colors replace suffix IW (Off White) with EI (Electric Ivory), WH (White), IG (International Gray), or BL (Black).

### Component Labels for Mini-Com® Inserts



| Suggested Label Solutions for TIA/EIA-606-A Compliance |                                     |  |                                       |                                     |
|--|-------------------------------------|--|---------------------------------------|-------------------------------------|
| Insert Part Number                                     | Laser/Ink Jet Desktop Printer Label | TDP43ME Thermal Transfer Desktop Printer Label | PanTher™ LS8E Hand-Held Printer Label | Cougar™ LS9 Hand-Held Printer Label |
| CHS2   | C125X030FJJ                         | C125X030YPT                                    | C125X030FJC                           | T031X000FJC-BK                      |
| CHS2S  |                                     |  |                                       |                                     |
| CHSRE2   |                                     |  |                                       |                                     |
| CHS1S  | C061X030FJJ                         | C061X030YPT                                    | C061X030FJC                           | T031X000FJC-BK                      |
| CHF2   | C125X030FJJ                         | C125X030YPT                                    | C125X030FJC                           | T031X000FJC-BK                      |

For complete labeling solutions and product information, reference charts on pages O.1 – O.22 of SA-NCCB51.