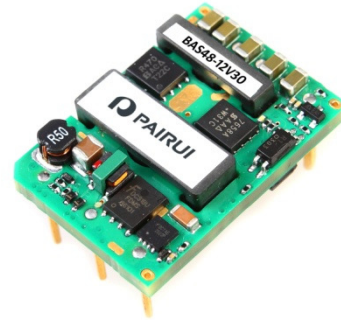


BAS SERIES, 1/16 BRICK, UP TO 60W

FEATURES:

- ✓ 5 years warranty
- ✓ Output current up to 30A
- ✓ 1500Vdc isolation voltage
- ✓ Wide (2:1) input voltage range
- ✓ Efficiency up to 91%
- ✓ Operating temperature range -40°C to +85°C
- ✓ Under voltage, over current, short circuit, over voltage protection
- ✓ Remote on/off
- ✓ Adjustable output voltage



Model	Input voltage (Vdc)	Output voltage (Vdc)	Output current (A)	Efficiency Typ.
BAS48-12V30	48(36~72)	1.2	30.0	83%
BAS48-18V25		1.8	25.0	83%
BAS48-33V15		3.3	15.0	89%
BAS48-33V10		3.3	10.0	89%
BAS48-33V20		3.3	20.0	89%
BAS48-50V6		5.0	6.0	91%
BAS48-50V12		5.0	12.0	89%

Notes:

1. Other input and output models may available on request;
2. You may request the models for different packages: Through hole package and SMT package; for SMT package, plus "SMT" in the suffix, e.g. BAS48-12V30SMT.

ELECTRICAL

Input voltage range	48Vdc	36-72Vdc
Remote control	Negative logic	ON: Low level or grounded OFF: High level or close
	Positive logic	OFF: Low level or grounded ON: High level or open
Output power	Input voltage range	33-66W
Output voltage	Single output	1.2/1.8/3.3/5.0Vdc
Output voltage adjustable	Positive logic	±10%
Line regulation	Full load	±0.2%
Load regulation	10%-100% full load	±0.5%
Dynamic response (transient/recovery time)	25%-50%-75% load capability	$\Delta V_o/\Delta t$: ±4.0%/500 μ s

BAS SERIES, 1/16 BRICK, UP TO 60W

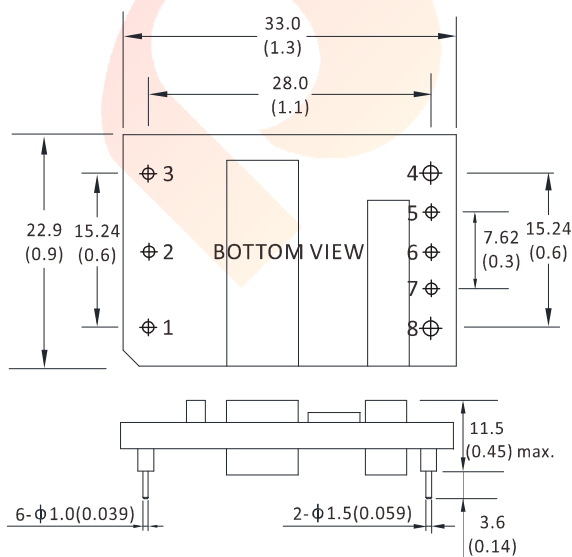
ELECTRICAL

Ripple and noise	Parallel test, 20MHz wide range	75mVp-p max.
Isolation voltage	Input to output	1500Vdc
Isolation resistance	---	10MΩ
Safety	---	IEC-60950-1, UL-60950-1 EN-60950-1, GB4943
Temperature coefficient	---	300ppm
Operating temperature range	Auxiliary heat sink	-40°C to +85°C
Storage temperature range	---	-40°C to +125°C
Over temperature protection	Typical	110°C typ.
Under voltage protection	---	Yes
Over current protection	---	Yes
Short circuit protection	---	Yes
Over voltage protection	---	Yes
Relative humidity	---	95% max.
Packing	---	Hole package / SMT
MTBF	Bellcore TR-332, 25°C	2x10 ⁶ Hrs

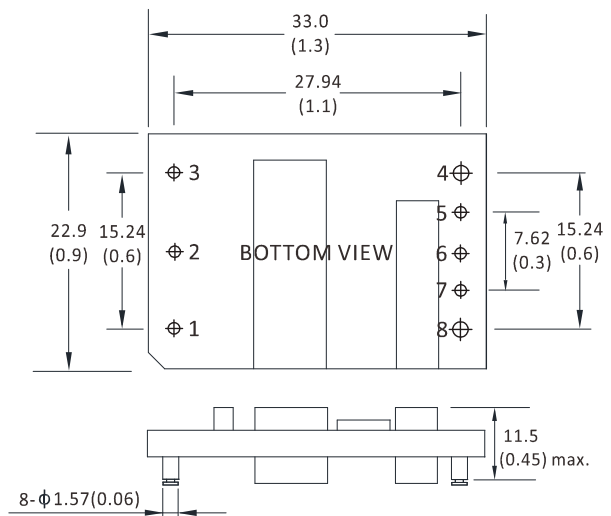
Notes: Unless otherwise specified, all the parameters of the test conditions are as follows: ambient temperature 25°C, the nominal input voltage, pure resistive nominal load.

MECHANICAL

THROUGH HOLE PACKAGE



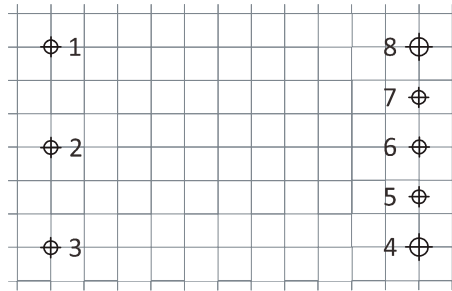
SMT PACKAGE



BAS SERIES, 1/16 BRICK, UP TO 60W

MECHANICAL

PCB LAYOUT



Unit: mm(inch)
PCB vertical view
Grid spacing: 2.54mm(0.1 inch)

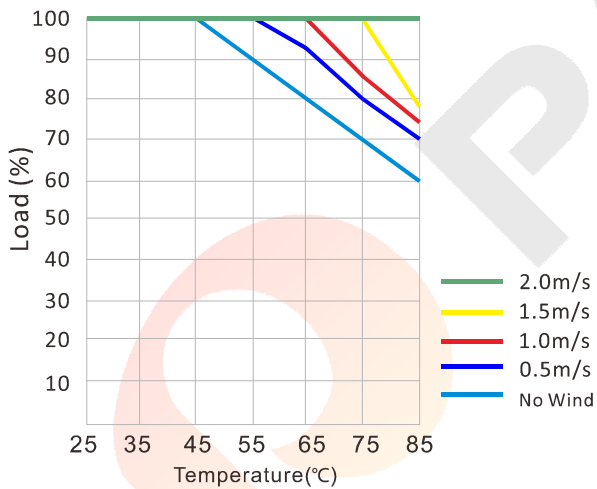
CONNECTION

PIN #	SINGLE
1	+Vin
2	REM
3	-Vin
4	GND
5	-S
6	TRIM
7	+S
8	+Vo

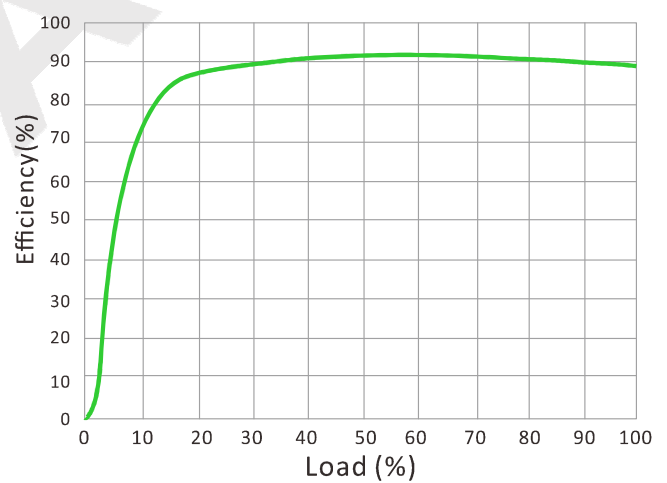
Note:

* Unit is mm(inch).

DERATING CURVE



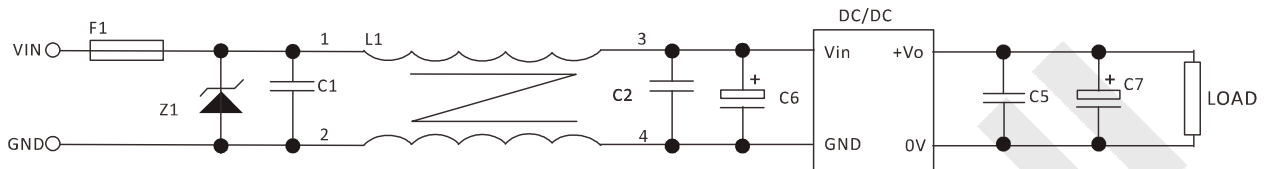
EFFICIENCY CURVE



BAS SERIES, 1/16 BRICK, UP TO 60W

NOTES

RECOMMENDED TEST AND APPLICATION CIRCUIT



1. TVS&FUSE be helpful with over voltage protection and inrush limiting. Recommended FUSE better be 1.5~2times of the rated current .
2. The input filter capacitor C6 could select the aluminum electrolytic capacitors or tantalum capacitors, and the withstand voltage should be greater than the highest input voltage. Recommended capacitor should be between 22 μ F~100 μ F.
3. C1,C2 for the input filter capacitor,0.1~1 μ F high-frequency ceramics capacitor or chip capacitor are recommended. The withstand voltage of output filter C5, C7 should be greater than the highest output voltage. Recommended capacitor of C7 better within 100 μ F and C5 connected with the chip to reduce the input voltage peak, recommended 0.1~1 μ F high-frequency ceramics capacitor or chip capacitor.