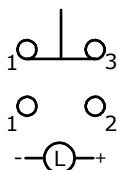
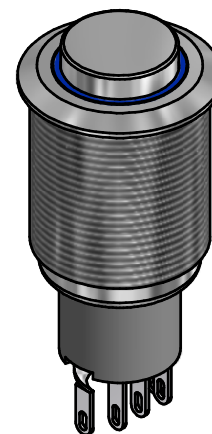
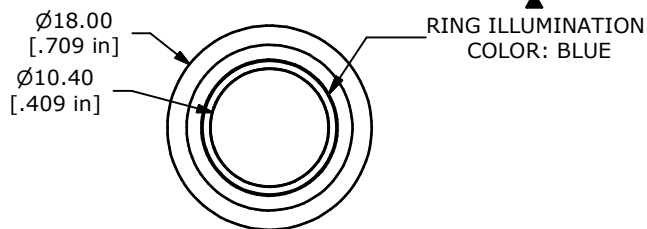


PANEL CUTOUT  
MAX. PANEL THICKNESS  
14.0mm [.551]

SWITCH FUNCTION	
POS. 1	POS. 2
ON	(ON)
1-3	1-2

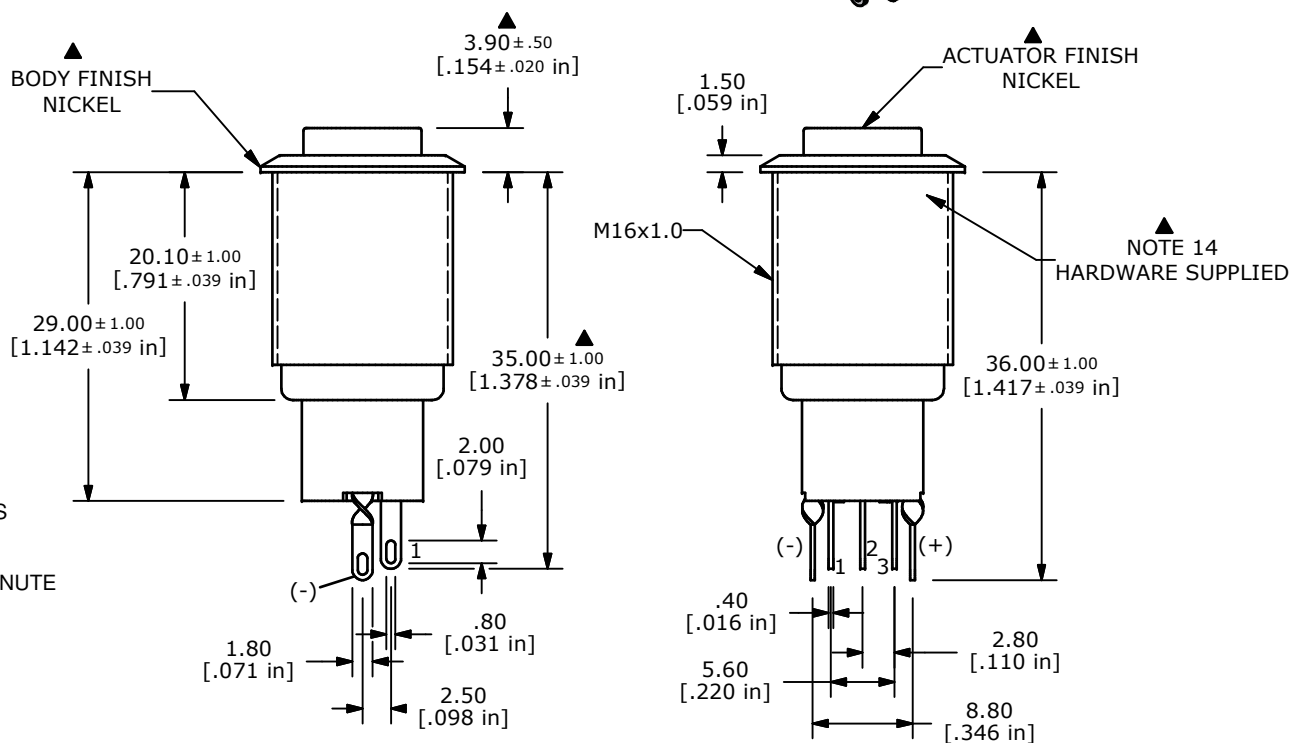
(ON) = MOMENTARY



SPDT  
CONTACT CONFIGURATION

NOTE:

1. ALL DIMENSIONS IN MM [INCH]
2. GENERAL TOLERANCE: X.X=±0.4  
X.XX=±0.25
3. TERMINAL NUMBERS FOR REF ONLY
- ▲ 4. CONTACT MATERIAL: SILVER
5. RATING: 2A 48VDC
6. ELECTRIC LIFE: 50,000 MAKE-AND-BREAK CYCLES AT FULL LOAD.
7. INSULATION RESISTANCE: 1,000 MΩ MIN.
8. DIELECTRIC STRENGTH: 2,000 VAC MIN. FOR 1 MINUTE
9. CONTACT RESISTANCE: 50mΩ MAX. @ 1A 12VDC
10. OPERATING TEMP.: -20°C to 55°C
11. ▲ DENOTES CRITICAL PARAMETER.
12. LAMP VOLTAGE: 12V
- ▲ 13. ILLUMINATION COLOR: BLUE
- ▲ 14. HARDWARE SUPPLIED: O-RING AND HEXNUT
- ▲ 15. INGRESS RATING: IP40
16. 2002/95/EC (ROHS) COMPLIANT



TITLE PV3H2B0NN-344

A	21018	RELEASE FOR PRODUCTION	2/11/13	EBP
REV	PCR NO	DESCRIPTION	DATE	BY

THE INFORMATION CONTAINED IN THIS DOCUMENT IS PROPRIETARY TO E-SWITCH AND IS NOT TO BE COPIED OR TRANSFERRED

SCALE	DATE	DR	DWG	REV
	12/27/2012	EBP	52-PV3H2B0NN344	A