

SINGLE BREAK, COMMERCIAL & MILITARY GRADES

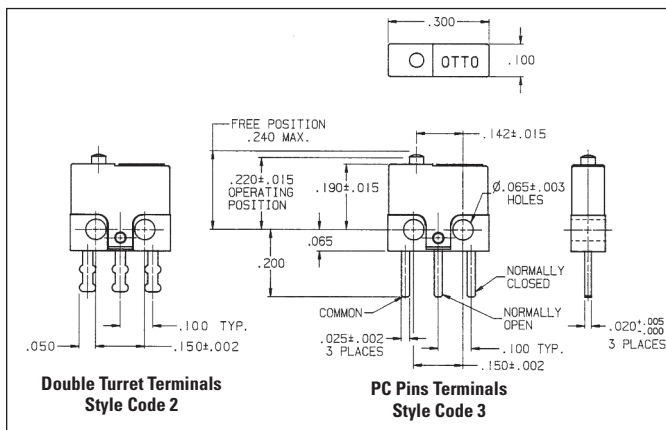
The B1 series basic switches are ultra-subminiature in size, designed to reliably switch low level logic signals as well as up to 2 amps switching capacity for a minimum of 25,000 cycles. Mechanical life expectancy is in excess of 1 million cycles.

The molded housing is rugged and structurally stable. The terminals are molded-in and sealed against solder flux entering the switch. The terminals are available in a choice of double turret solder style and 0.020" x 0.025" PC pins.

The B1 series is also available with integral lever actuators as B1-5 series.

Features:

- **Ultra-compact: only 0.300" w x 0.250" h x 0.100" thk**
- **1 million cycle life**
- **Low level logic switching capability**
- **Designed to meet requirements of MIL-PRF-8805/94**
- **Available in Commercial & Military grades**
- **Choice of solder or PC molded-in terminals**
- **Precision operating points**



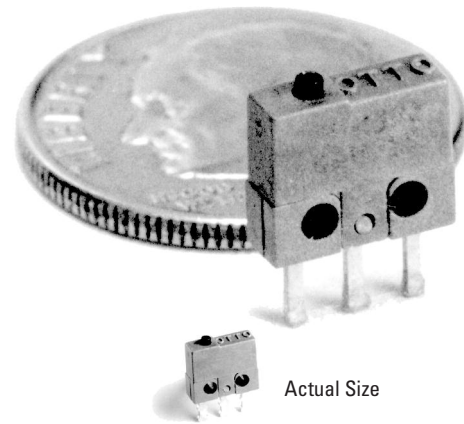
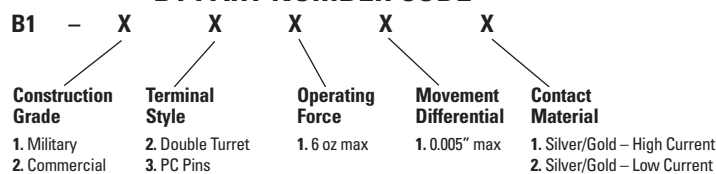
ORDERING INFORMATION:

B1 Basic

Select the OTTO B1 basic switch to match your specific circuit and mechanical requirements. To order, specify your requirement using the OTTO Part Number Code shown below.

Example: B1-12111 specifies Military grade construction, double turret terminals, 6 oz max operating force, default integer and gold flash/silver contacts.

B1 PART NUMBER CODE



Standard Characteristics/Ratings:		
ELECTRICAL RATINGS:		
Load	Sea Level @ 28VDC or 115VAC, 60Hz	50,000 feet @ 28VDC
Resistive	2A	2A
Inductive*	0.5A	0.2A
DWV	1050Vrms	400Vrms
Low Level	30mV max and 10mA max	30mV and 10mA max
*L/R = 0.026		
Electrical Life:	25,000 cycles	
Mechanical Life:	1 million cycles	
Seal:	Unsealed	
Operating Temp Range:	-55°C to +125°C	
Operating Force:	6 oz max	
Release Force:	0.7 oz min	
Operate Point:	0.220 +/- 0.015 inches from mounting holes	
Overtravel:	0.003 inches min	
Movement Differential:	0.002 inches nominal, 0.005 inches max	
Pretravel:	0.015 inches max	
MATERIALS:		
Case:	Thermoset, blue	
Cover:	Thermoplastic, blue	
Button:	Thermoplastic, black	
Terminals:	Brass, gold over nickel	
Contacts:	Stationary: Silver with gold plate Moveable: Silver with gold plate	
Terminal Hardware:	None provided	
Mounting Hardware:	None provided	