



Micro Commercial Components
20736 Marilla Street Chatsworth
CA 91311
Phone: (818) 701-4933
Fax: (818) 701-4939

MCC245

Features

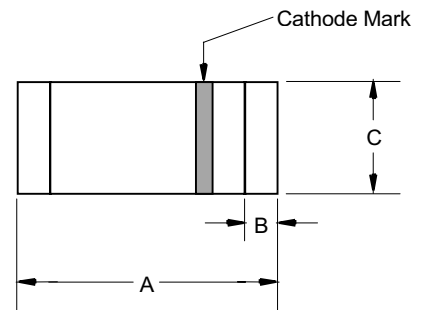
- High Reliability
- Compression Bond Construction
- General Purpose Rectification
- Surface Mount Applications

300mW 250 Volt Switching Diode

Maximum Ratings

- Operating Temperature: -55°C to +150°C
- Storage Temperature: -55°C to +150°C

MINIMELF

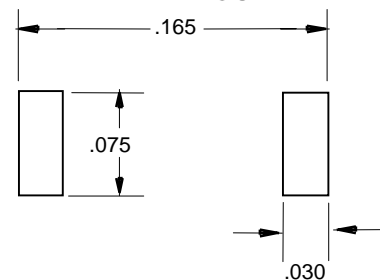


Electrical Characteristics @ 25°C Unless Otherwise Specified

Reverse Voltage	V_R	220V	
Peak Reverse Voltage	V_{RM}	250V	
Average Rectified Current	I_O	200mA	Resistive Load $f > 50\text{Hz}$
Power Dissipation	P_{TOT}	300mW	
Junction Temperature	T_J	150°C	
Peak Forward Surge Current	I_{FSM}	1000mA	$t_p = 1.0 \text{ s}$
Maximum Instantaneous Forward Voltage	V_F	1.5V	$I_{FM} = 200\text{mA};$
Maximum DC Reverse Current	I_R	10 μA	$V_R=220\text{Volts}$
Maximum Junction Capacitance	C_J	3pF	Measured at 1.0MHz, $V_R=0\text{V}$
Maximum Reverse Recovery Time	t_{rr}	75nS	$I_F = 20\text{mA}$ $I_R = 20\text{mA}$ $R_L = 50\Omega$

DIM	INCHES		MM		NOTE
	MIN	MAX	MIN	MAX	
A	.134	.142	3.40	3.60	
B	.008	.016	.20	.40	
C	.055	.059	1.40	1.50	∅

SUGGESTED SOLDER PAD LAYOUT



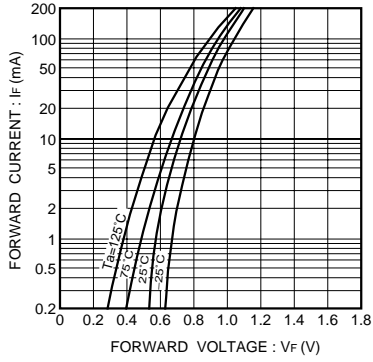


Fig. 1 Forward characteristics

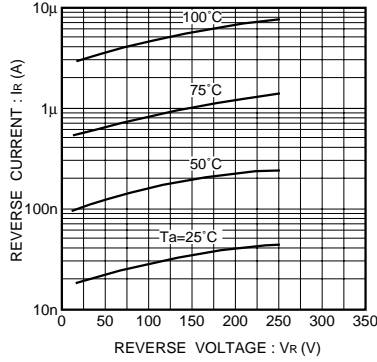


Fig. 2 Reverse characteristics

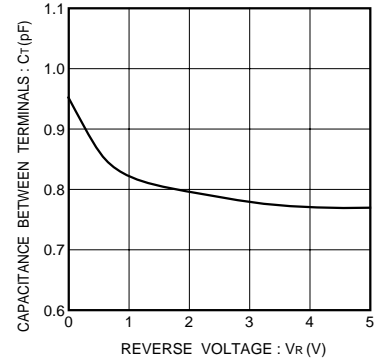


Fig. 3 Capacitance between terminals characteristics

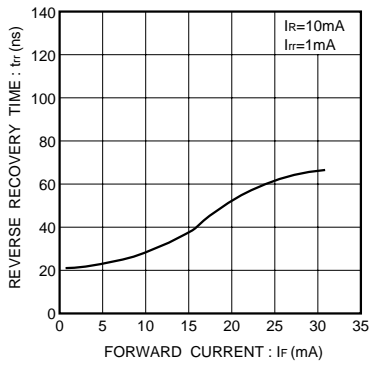


Fig. 4 Reverse recovery time characteristics

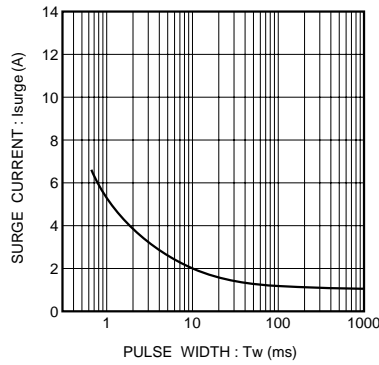


Fig. 5 Surge current characteristics

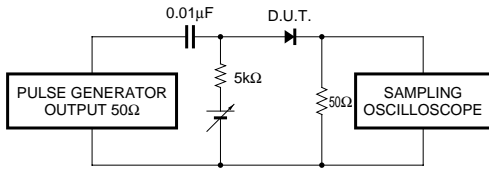


Fig. 6 Reverse recovery time (t_{rr}) measurement circuit