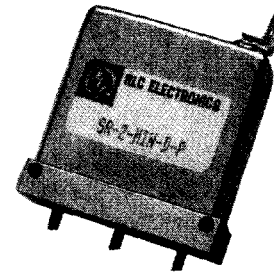


Surface Mount Coaxial Switches



This RLC Electronics Surface Mount Coaxial Switch is a single pole two position type. The switch is suitable for surface mount/drop-in

applications while maintaining the excellent electrical and mechanical characteristics of the connectorized version.

Specifications

S¹-2 MIN 2.3.4.5.6.7.8

Switch Type	Single Pole Two Position		
Frequency Range	DC-18 GHz		
Frequency (GHz)	DC-4	4-12.4	12.4-18
Insertion Loss (Max)	0.2 dB	0.3 dB	0.4 dB
VSWR (Max)	1.2:1	1.3:1	1.5:1
Isolation (Min)	60 dB	60 dB	60 dB

Power Rating, RF, Cold Switching: See page 2.

Impedance: 50 ohms.

Operating Power 25 °C:

(Failsafe): 12 Vdc at 250 ma nom.

28 Vdc at 140 ma nom. 115 Vac at 50 ma nom.

(Latching): 12 Vdc at 120 ma nom. 28 Vdc at 60 ma nom. 115 Vac at 43 ma nom. Current applied 10 ms min.; cutthroat standard, recovery time 100 ms nom.

Connectors, RF: .020 DIA Pins or Solder Tabs .050 Wide.

Connectors, Power: Feed through solder lugs.

Life: 1,000,000 operations.

Switching Time: 15 milliseconds max.

Weight: 2 oz.

Environmental Conditions: MIL-S-3928

Operating Mode: Manual failsafe or latching.

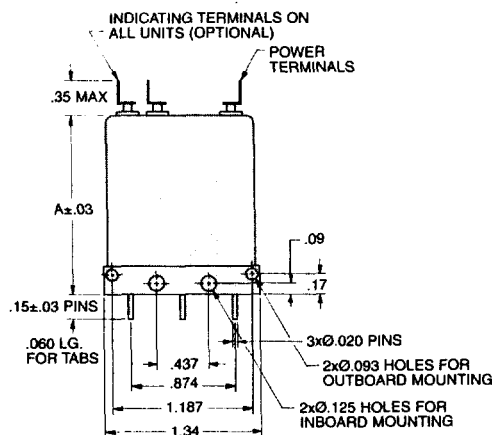
Switching Sequence: Break before make.

To designate the switch desired use:

- (1) "M" for Manual, "R" for Remote.
- (2) "Min" for outboard mountings or "Minin" for inboard mountings.
- (3) "A" for 115 Vac, "D" for 28 Vdc or "H" for 12 Vdc.

- (4) "I" for Indicators if desired.
- (5) "L" for latching cutthroat if desired.
- (6) "TL" for TTL Driver if desired.
- (7) "Arc" for Arc Suppression diodes. N/A for TTL and Latching.
- (8) "P" for pins, "TAB" for tabs.

Example: SR-2 min-D-P is a remote, outboard mounting, 28 Vdc, failsafe switch with pin connectors.



MODEL NO.	A
SR-2 Min-D	1.18
SR-2 Min-D-I	1.59
SR-2 Min-D-L	1.80
SR-2 Min-D-I-L	1.81
SR-2 Min-D-TL	1.85
SR-2 Min-D-I-TL	1.85
SR-2 Min-D-I-L-TL	1.81
Add to Above For 115 VAC	.42
2 Minin and 2 Min-H Units same as 2 Min	
Width of all units .50 in	

Tolerances unless otherwise specified are: .xx, ± .02; .xxx, ± .005.

Specials requiring closer tolerances, different frequency ranges, special connectors, different materials, finishes, etc., can be furnished upon request. Specifications subject to change without notice.

RLC ELECTRONICS, INC.

83 Radio Circle, Mt. Kisco, NY 10549
(914) 241-1334 • FAX: 914-241-1753

