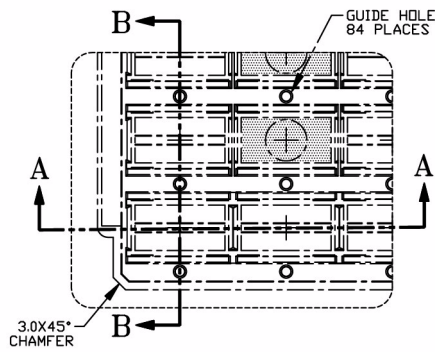
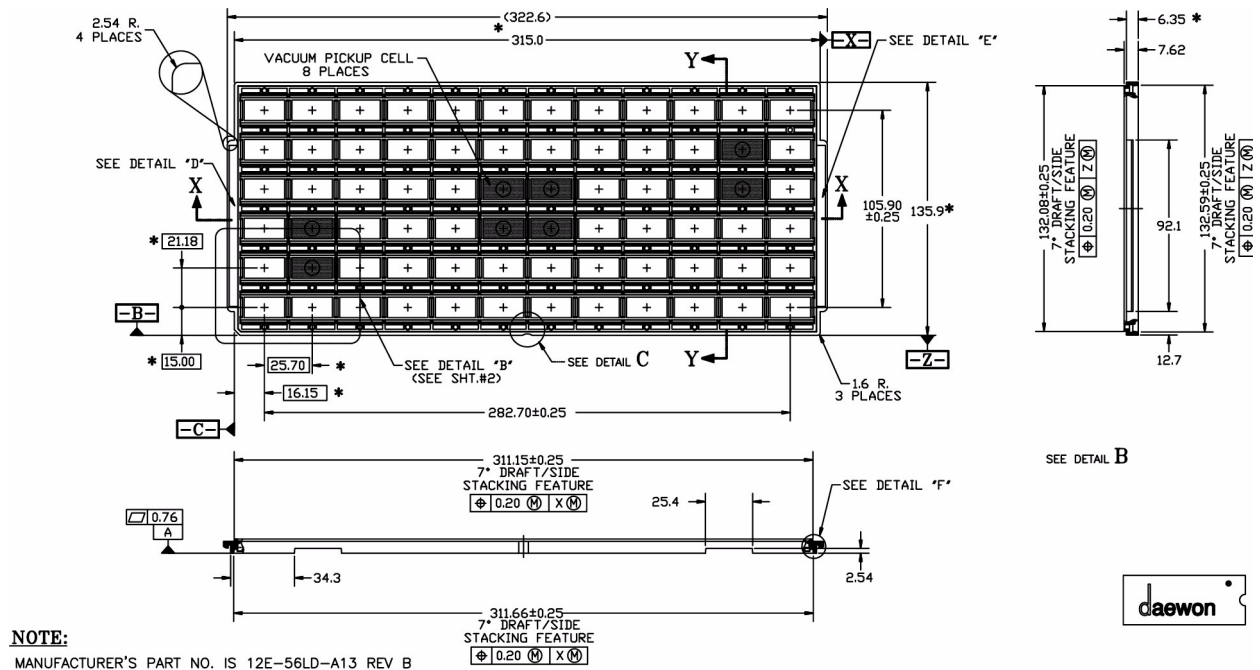
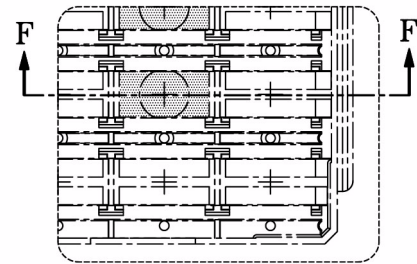
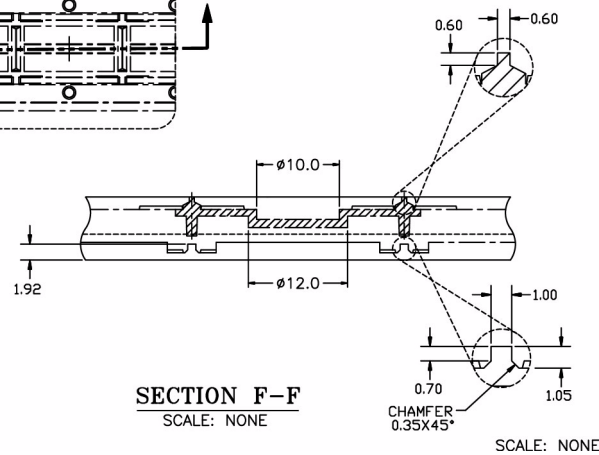


Shrink Small Outline Package: 56-Lead SSO



TOP VIEW
DETAIL B
SCALE: NONE



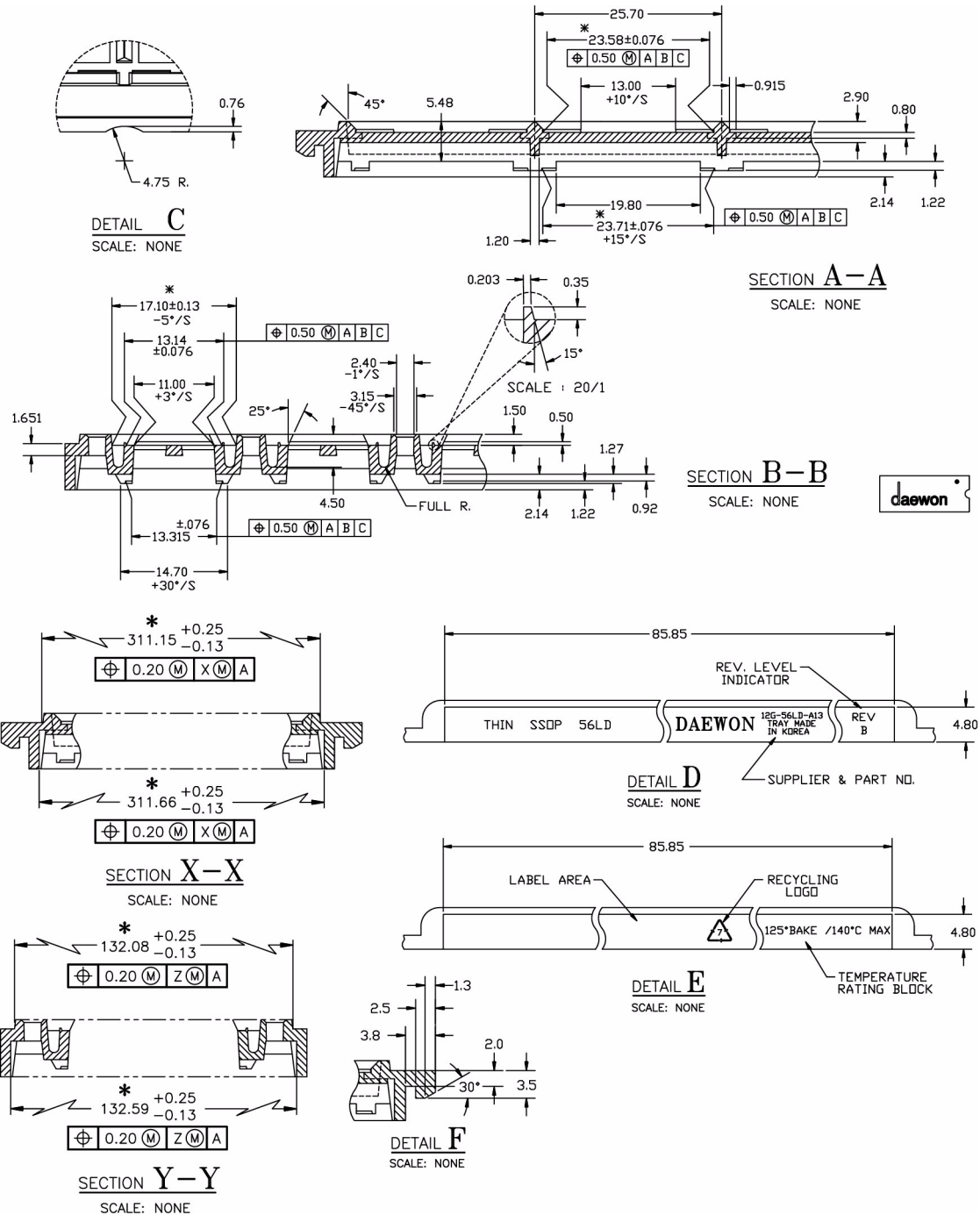
BOTTOM VIEW
DETAIL B
SCALE: NONE

Notes:

- 1 All dimensions are in millimeters.
- 2 Trays can withstand continuous operation at temperatures up to 140°C.

(See next page for detailed views)

Shrink Small Outline Package: 56-Lead SSO



Notes:

- 1 All dimensions are in millimeters.
- 2 Trays can withstand continuous operation at temperatures up to 140°C.