

.695" HEIGHT PROFILE ALL PLASTIC PRESS FIT FEMALE RECEPTACLES FOR PCB MOUNTING



LR49571 E80980

PHYSICAL PROPERTIES

INSULATION MATERIAL: Glass filled polyester
rated UL 94V-0

COLOR: Black

CONTACTS: High strength copper alloy

DURABILITY: Up to 300 insertions and withdrawals
without degradation of performance, dependent
upon contact plating thickness selected

ELECTRICAL PROPERTIES

OPERATING VOLTAGE: 600 VDC (sea level)

CURRENT RATING: 5 Amperes

CONTACT RESISTANCE: 10 milliohms max.
@ rated current

INSULATION RESISTANCE: 5000 megohms minimum

DIELECTRIC WITHSTANDING VOLTAGE:
1000 VAC minimum

ENVIRONMENTAL PROPERTIES

TEMPERATURE RATING: -55°C TO 125°C

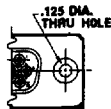
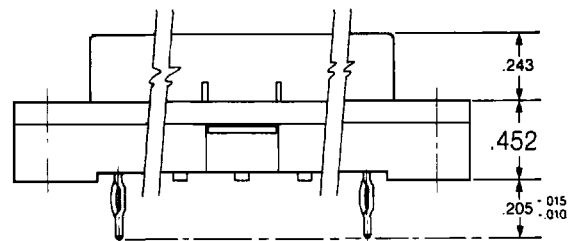
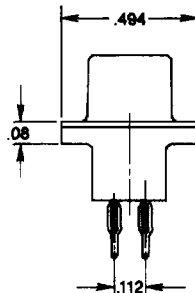
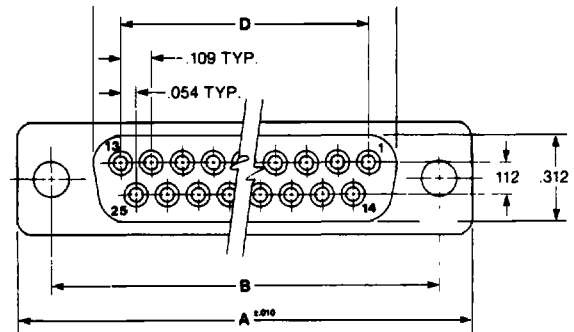
APPLICATION TOOLING

Mass Insertion Press Fit Tool:

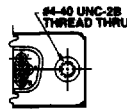
- 09 pos. 9823501
- 15 pos. 9823502
- 25 pos. 9823503
- 37 pos. 9823504

REMOVAL TOOL: Part # 98180

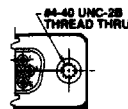
CAP REMOVAL TOOL: Part # 98175



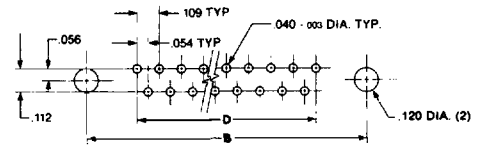
MOUNTING STYLE A
FLUSH



MOUNTING STYLE B
THREADED STANDOFF



MOUNTING STYLE C
FLUSH INSERT



P.C. BOARD HOLE PATTERN

Ordering Information

NUMBER OF CONTACTS	CONTACT NUMBER BY PIN AND POSITION	CONTACT NUMBER BY PIN AND POSITION	CONTACT NUMBER BY PIN AND POSITION	LENGTH	HEIGHT	WIDTH	DEPTH
9	H8R09PF29A	H8R09PF29B	H8R09PF29C	1.224	.984	.646	.436
15	H8R15PF29A	H8R15PF29B	H8R15PF29C	1.552	1.312	.974	.763
25	H8R25PF29A	H8R25PF29B	H8R25PF29C	2.002	1.852	1.514	1.308
37	H8R37PF29A	H8R37PF29B	H8R37PF29C	2.740	2.500	2.162	1.942

NOTE: Add suffix S for metal snap latch. Not available on basic connector.