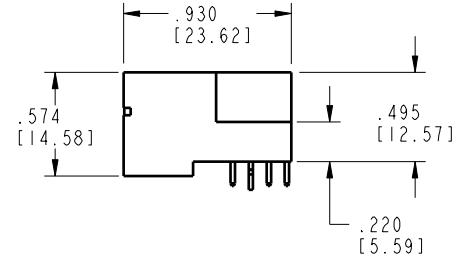
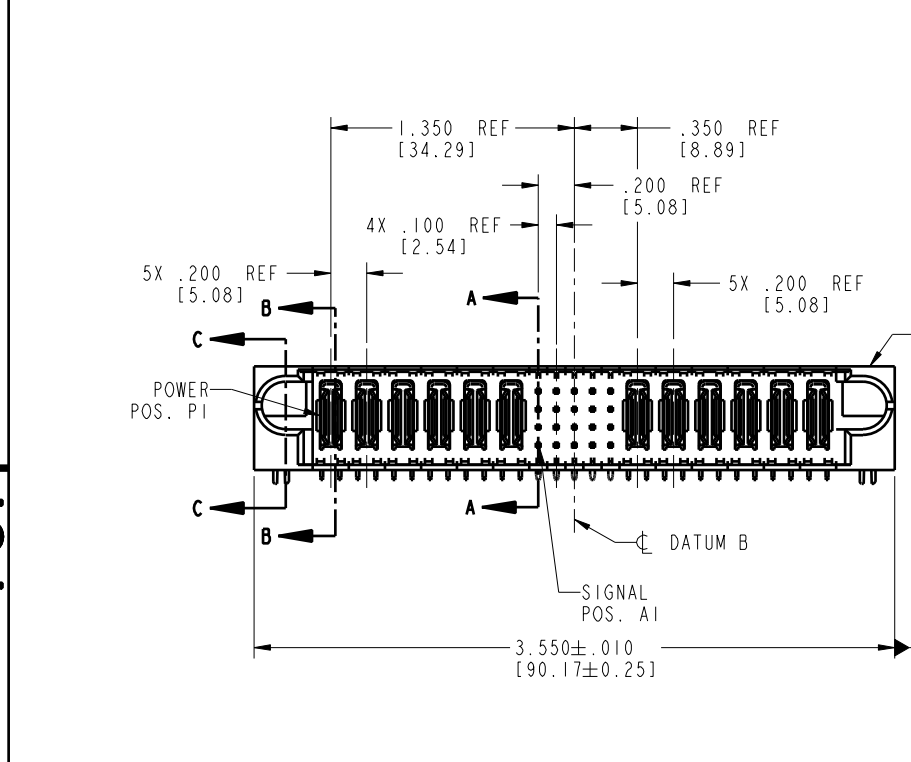
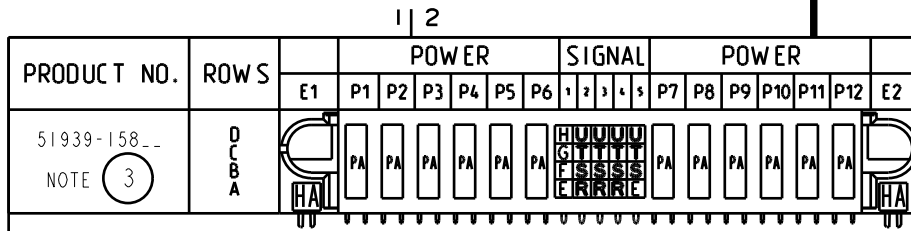


Tous droits strictement réservés. Reproduction ou communication à des tiers interdite sous quelque forme que ce soit sans autorisation écrite du propriétaire. Propriété de c FCI. Droits de reproduction FCI.

All rights strictly reserved. Reproduction or issue to third parties in any form whatsoever is not permitted without written authority from the proprietor. Property of FCI. Copyright FCI.



CODE	DIM "M" MATING LENGTH	CONTACT TYPE
E	.220 [5.59]	SIGNAL
F	.220 [5.59]	SIGNAL
G	.220 [5.59]	SIGNAL
H	.220 [5.59]	SIGNAL
R	.270 [6.86]	SIGNAL
S	.270 [6.86]	SIGNAL
T	.270 [6.86]	SIGNAL
U	.270 [6.86]	SIGNAL
PA	N/A [N/A]	POWER
HA	N/A [N/A]	HOLD-DOWN

mat'l code				tolerances unless otherwise specified		CUSTOMER	
SEE NOTE 2						COPY	
lir	ecn no.	dr	date	linear	projection		
A	DG05-0022	SW	02/16/05	.XX±.01/0.X±0.3	title 6P + 20S + 6P		
B	DG06-0013	RYAN	01/27/06	.XXX±.005/0.XX±0.13	RIGHT ANGLE SOLDER HEADER		
				.XXX±.002/0.XXX±0.051	product family PwrBlade code 213		
				angles 0°±2°	size dwg no 51939-158		
				dr STEVEN WANG 02/16/05	sheet 1 of 4		
				engr STEVEN WANG 02/16/05			
				chr VICTOR LIN 02/16/05			
				appd JOSEPH HSIA 02/16/05			
sheet index	revision	B	B	B	B		
	sheet	1	2	3	4		

INCH/MM		scale	
1:1		A	

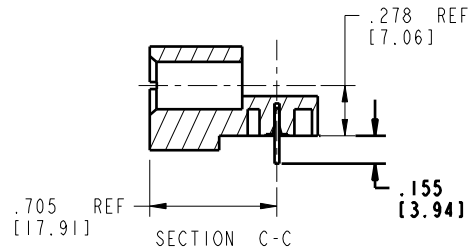
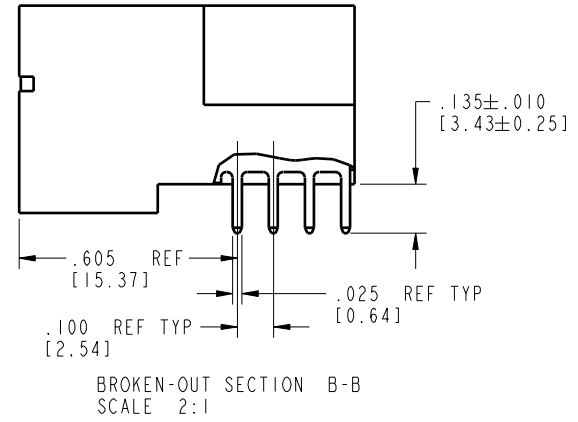
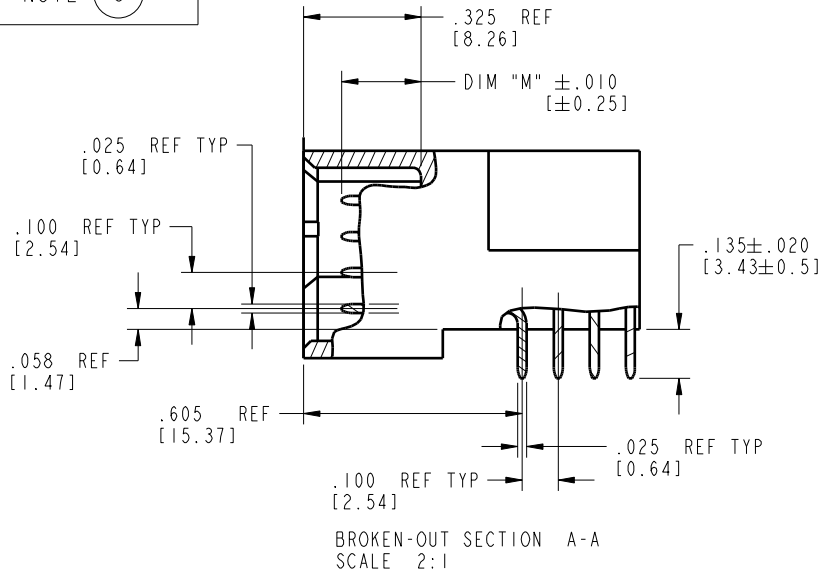
code code 22526

Pro/E

Tous droits strictement réservés. Reproduction ou communication o des liers interdite sous quelque forme que ce soit sans autorisation écrite du propriétaire. Propriété de c FCI. Droits de reproduction FCI.

All rights strictly reserved. Reproduction or issue to third parties in any form whatsoever is not permitted without written authority from the proprietor. Property of FCI. Copyright FCI.

PRODUCT NUMBER
51939-158__
NOTE (3)



mat'l code SEE NOTE 2				tolerances unless otherwise specified		CUSTOMER		FCI		www.fciconnect.com	
lir	ecr no.	dr	date	linear	.XX±.01/0.X±0.3	COPY		projection		title 6P + 20S + 6P	
B					.XXX±.005/0.XX±0.13			RIGHT ANGLE		SOLDER HEADER	
				angles	.XXX±.002/0.XXX±0.051			INCH/MM		product family PwrBlade	
				dr	0° ± 2°			scale 1:1		code 213	
				eng	STEVEN WANG 02/16/05			size		sheet 2 of 4	
				chr	VICTOR LIN 02/16/05			A		51939-158	
				appd	JOSEPH HSIA 02/16/05						
sheet index	revision sheet										

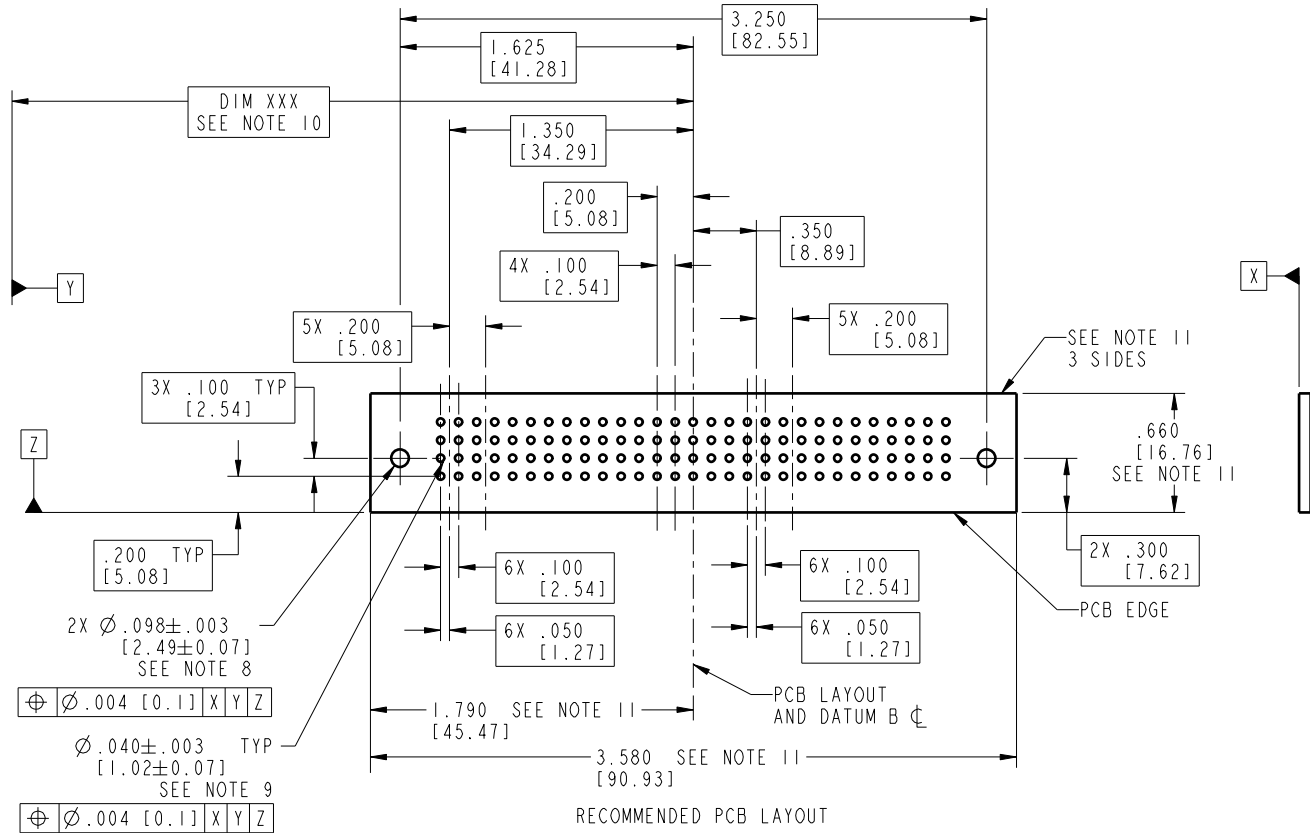
code code 22526

Pro/E

Tous droits strictement réservés. Reproduction ou communication o des liers interdite sous quelque forme que ce soit sans autorisation écrite du propriétaire. Propriété de c FCI. Droits de reproduction FCI.

All rights strictly reserved. Reproduction or issue to third parties in any form whatsoever is not permitted without written authority from the proprietor. Property of FCI. Copyright FCI.

PRODUCT NUMBER
51939-158__
NOTE (3)



mat'l code		SEE NOTE 2	tolerances unless otherwise specified		CUSTOMER	FCI		www.fciconnect.com	
lir	ecn no.	dr	date	linear	COPY	projection	title	6P + 20S + 6P	
B				.XX±.01/0.X±0.3			RIGHT ANGLE SOLDER HEADER		
				.XXX±.005/0.XX±0.13	INCH/MM		product family	PwrBlade	code
				.XXX±.002/0.XXX±0.051	scale	1:1	size	dwg no	213
				angles			A	51939-158	sheet
				dr	STEVEN WANG	02/16/05			3 of 4
				engr	STEVEN WANG	02/16/05			
				chr	VICTOR LIN	02/16/05			
				appd	JOSEPH HSIA	02/16/05			
sheet index	revision	sheet							

code code 22526

Pro/E

Tous droits strictement réservés. Reproduction ou communication o des liers interdite sous quelque forme que ce soit sans autorisation écrite du propriétaire. Propriété de c FCI. Droits de reproduction FCI.

A
FCI

All rights strictly reserved. Reproduction or issue to third parties in any form whatsoever is not permitted without written authority from the proprietor. Property of FCI. Copyright FCI.

B

1 | 2

3 |

4

PRODUCT NUMBER
51939-158__
NOTE (3)

NOTES:

1. DIMENSIONS AND TOLERANCES ARE IN ACCORDANCE WITH ASME Y14.5M, 1994 UNLESS OTHERWISE SPECIFIED.

CONNECTOR NOTES:

- (2.) HOUSING MATERIAL: UL 94 V-0 GLASS FILLED HIGH-TEMP THERMOPLASTIC
POWER CONTACT MATERIAL: COPPER ALLOY
SIGNAL PIN MATERIAL: COPPER ALLOY
 - (3.) PLATING:
51939-158; 51939-158LF; 51939-158GLF SEE PRINT 10064183.
 - (4.) MANUFACTURER'S NAME, P/N, AND DATE CODE TO APPEAR ON THIS SURFACE.
 - 5. PRODUCT SPECIFICATION GS-12-149.
APPLICATION SPECIFICATION BUS-20-067.
 - 6. PACKAGED IN TRAYS.
- PCB NOTES:
- 7. ALL HOLE DIAMETERS ARE FINISHED HOLE SIZE.
 - (8.) MOUNTING HOLES, WHERE APPLICABLE, ARE UNPLATED.
 - (9.) $\varnothing .0453 \pm .0010$ [1.151 \pm 0.025] DRILLED HOLES PLATED WITH .0003 [0.008] MIN SnPb OVER .001 [0.03] TO .003 [0.08] Cu PLATING TO ACHIEVE $\varnothing .040 \pm .003$ [1.02 \pm .07] HOLE.
 - (10.) "DIM XXX" TO BE DETERMINED BY THE CUSTOMER.
 - (11.) CONNECTOR KEEP-OUT ZONE.

mat'l code		SEE NOTE 2		tolerances unless otherwise specified		CUSTOMER		A FCI		www.fciconnect.com	
lir	ecr no.	dr	date	linear	.XX±.01/0.X±0.3	COPY		projection		title	
B					.XXX±.005/0.XX±0.13					6P + 20S + 6P	
				angles	.XXX±.002/0.XXX±0.051					RIGHT ANGLE SOLDER HEADER	
				dr	0° ± 2°	INCH/MM		product family		code	
				eng	STEVEN WANG 02/16/05	1:1		PwrBlade		213	
				chr	STEVEN WANG 02/16/05			size		sheet	
				opod	VICTOR LIN 02/16/05			A		4 of 4	
					JOSEPH HSIA 02/16/05			51939-158			
sheet index	revision	sheet									

A

B

1 | 2

Pro/E

3 |

code code 22526

4