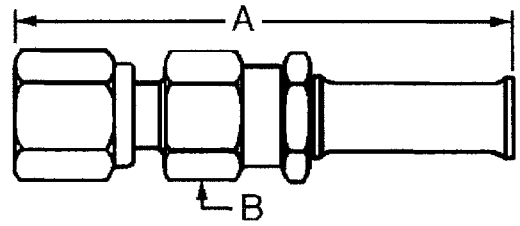


### SMC 50 Ohm Cable Plugs

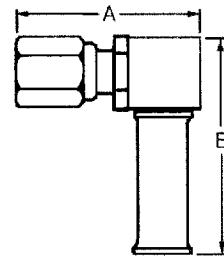
**Description**  
SMC 50 Ohm Cable Plug - Long Crimp Straight



**Ordering Data**  
SMC 50 Ohm Cable Plug - Long Crimp Straight

Part Number	Cable RG-/U	Crimp Tool Hex		Dimension				Finish	Assembly Instructions
		mm	in.	A		B (Hex)			
37P106-1	174, 316	3.25	0.128	26.16	1.030	5.59	0.220	Gold	AI-105
37P106-6	178, 196	2.67	0.105	26.16	1.030	5.59	0.220	Gold	AI-105

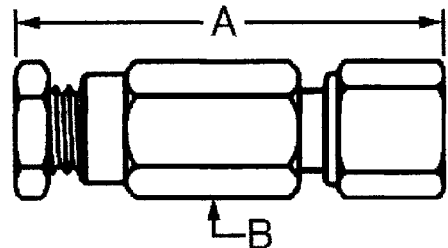
**Description**  
SMC 50 Ohm Cable Plug - Short Crimp Right-Angle



**Ordering Data**  
SMC 50 Ohm Cable Plug - Short Crimp Right-Angle

Part Number	Cable RG-/U	Crimp Tool Hex		Dimension				Finish	Assembly Instructions
		mm	in.	A		B			
37P104-1	174, 316	3.25	0.128	14.22	0.560	16.00	0.630	Gold	AI-53

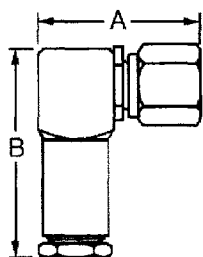
**Description**  
SMC 50 Ohm Cable Plug - Clamp Straight



**Ordering Data**  
SMC 50 Ohm Cable Plug - Clamp Straight

Part Number	Cable RG-/U	Dimension				Finish	Assembly Instructions
		A		B			
37P112-2	174, 316	18.29	0.720	7.11	0.280	Gold	AI-136
37P133-1	174, 316	18.29	0.720	5.59	0.220	Gold	AI-136
37P133-2	178, 196	18.29	0.720	5.59	0.220	Gold	AI-136

To obtain Assembly Instructions contact Berg Electronics at 1-800-237-2374 Ext.-2800

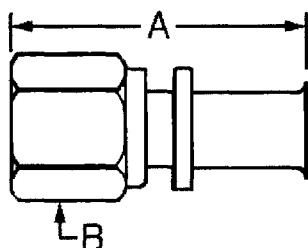


**Description**  
SMC 50 Ohm Cable Plug - Clamp Right-Angle

**Ordering Data**

SMC 50 Ohm Cable Plug - Clamp Right-Angle

Part Number	Cable RG-/U	Dimension				Finish	Assembly Instructions
		A		B			
		mm	inch	mm	inch		
37P134-2	174, 316	13.97	0.550	16.00	0.630	Gold	AI-137
37P134-3	178, 196	13.97	0.550	16.00	0.630	Gold	AI-137

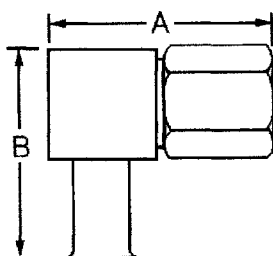


**Description**  
SMC 50 Ohm Cable Plug - Solder Straight

**Ordering Data**

SMC 50 Ohm Cable Plug - Solder Straight

Part Number	Cable RG-/U	Dimension				Finish	Assembly Instructions
		A		B (Hex)			
		mm	in.	mm	in.		
37P115-1	0.085 S.R.	12.70	0.500	5.84	0.230	Gold	AI-199



**Description**  
SMC 50 Ohm Cable Plug - Solder Right-Angle

**Ordering Data**

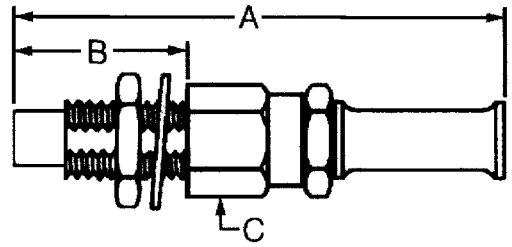
SMC 50 Ohm Cable Plug - Solder Right-Angle

Part Number	Cable RG-/U	Dimension				Finish	Assembly Instructions
		A		B			
		mm	in.	mm	in.		
37P126-1	0.085 S.R.	13.97	0.550	11.43	0.450	Silver	AI-311

To obtain Assembly Instructions contact Berg Electronics at 1-800-237-2374 Ext.-2800

SMC Series  
50 Ohm - Jack

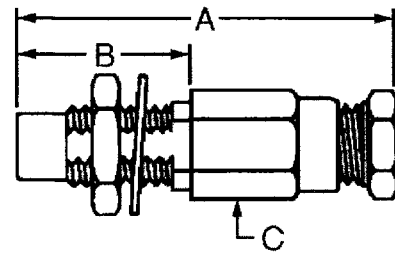
**Description**  
SMC 50 Ohm Cable Jack -  
Single Hole Mount Long Crimp Straight



**Ordering Data**  
SMC 50 Ohm Cable Jack - Single Hole Mount Long Crimp Straight

Part Number	Cable RG-/U	Crimp Tool Hex		Dimension						Finish	Mtg. Hole	Assembly Instructions
				A		B		C				
		mm	in.	mm	in.	mm	in.	mm	in.			
37JS102-1	174, 316	3.25	0.128	28.96	1.140	10.92	0.430	5.59	0.220	Gold	D12	AI-39

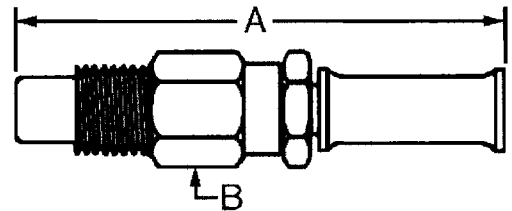
**Description**  
SMC 50 Ohm Cable Jack -  
Single Hole Mount Long Clamp Straight



**Ordering Data**  
SMC 50 Ohm Cable Jack - Single Hole Mount Long Clamp Straight

Part Number	Cable RG-/U	Dimension						Finish	Mtg. Hole	Assembly Instructions
		A		B		C				
		mm	in.	mm	in.	mm	in.			
37JS103-1	178, 196	21.08	0.830	10.92	0.430	6.35	0.250	Gold	D12	AI-55
37JS103-2	174, 316	21.08	0.830	10.92	0.430	6.35	0.250	Gold	D12	AI-55

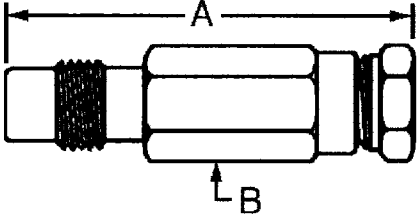
**Description**  
SMC 50 Ohm Cable Jack - Long Crimp Straight



**Ordering Data**  
SMC 50 Ohm Cable Jack - Long Crimp Straight

Part Number	Cable RG-/U	Crimp Tool Hex		Dimension				Finish	Assembly Instructions
				A		B			
		mm	in.	mm	in.	mm	in.		
37J103-1	174, 316	3.25	0.128	24.89	0.980	5.59	0.220	Gold	AI-39

To obtain Assembly Instructions contact Berg Electronics at 1-800-237-2374 Ext.-2800



**Description**  
SMC 50 Ohm Cable Jack - Clamp Straight

**Ordering Data**  
SMC 50 Ohm Cable Jack - Clamp Straight

Part Number	Cable RG-/U	Dimension				Finish	Assembly Instructions
		A		B			
		mm	in.	mm	in.		
37J105-1	178, 196	18.29	0.720	6.35	0.250	Gold	AI-104
37J105-2	174, 188, 316	18.29	0.720	6.35	0.250	Gold	AI-104

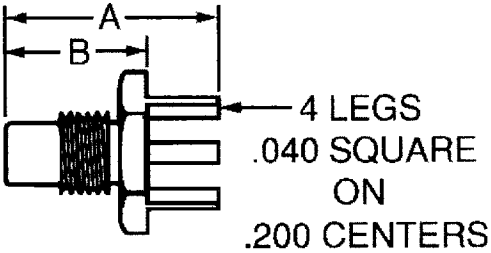
**SMC 50 Ohm Receptacle**



**Description**  
SMC 50 Ohm Receptacle Plug - Single Hole Mount Straight

**Ordering Data**  
SMC 50 Ohm Receptacle Plug - Single Hole Mount Straight

Part Number	Dimension						Finish	Mtg. Hole
	A		B		C (Hex)			
	mm	in.	mm	in.	mm	in.		
37PR100-1	18.29	0.720	7.87	0.310	6.35	0.250	Gold	D12



**Description**  
SMC 50 Ohm Receptacle Jack - Printed Circuit Board Mount Straight

4 LEGS  
.040 SQUARE  
ON  
.200 CENTERS

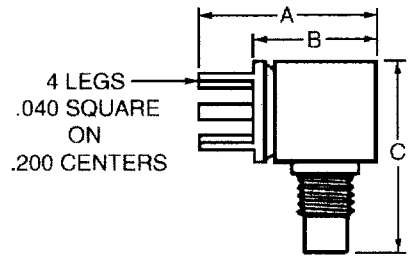
**Ordering Data**  
SMC 50 Ohm Receptacle Jack - Printed Circuit Board Mount Straight

Part Number	Dimension				Finish	Mtg. PCB
	A		B			
	mm	in.	mm	in.		
37JR104-2	11.43	0.450	7.37	0.290	Gold	A1

To obtain Assembly Instructions contact Berg Electronics at 1-800-237-2374 Ext.-2800

SMC Series  
50 Ohm - Receptacle

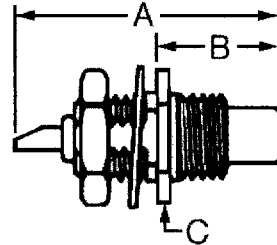
**Description**  
SMC 50 Ohm Receptacle Jack -  
Printed Circuit Board Mount Right-Angle



**Ordering Data**  
SMC 50 Ohm Receptacle Jack - Printed Circuit Board Mount Right-Angle

Part Number	Dimension								Finish	Mtg. PCB
	A		B		C		D			
	mm	in.	mm	in.	mm	in.	mm	in.		
37JR110-1	13.46	0.530	9.65	0.380	14.99	0.590	7.87	0.310	Gold	A1

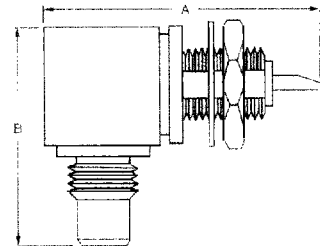
**Description**  
SMC 50 Ohm Receptacle Jack -  
Single Hole Mount Straight



**Ordering Data**  
SMC 50 Ohm Receptacle Jack - Single Hole Mount Straight

Part Number	Dimension						Finish	Mtg. Hole
	A		B		C			
	mm	in.	mm	in.	mm	in.		
37JR101-1	14.99	0.590	6.86	0.270	6.35	0.250	Gold	D12

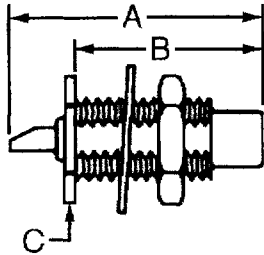
**Description**  
SMC 50 Ohm Receptacle Jack -  
Single Hole Mount Right-Angle



**Ordering Data**  
SMC 50 Ohm Receptacle Jack - Single Hole Mount Right-Angle

Part Number	Dimension				Finish	Mtg. Hole
	A		B			
	mm	in.	mm	in.		
37JR107-1	19.05	0.750	14.99	0.590	Gold	D12

To obtain Assembly Instructions contact Berg Electronics at 1-800-237-2374 Ext.-2800

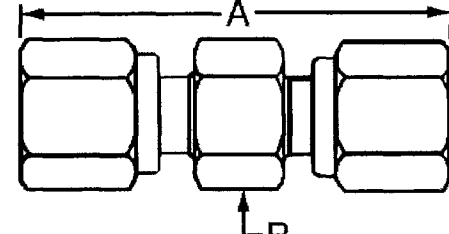


**Description**  
SMC 50 Ohm Receptacle Jack - Single Hole Reverse Mount Straight

**Ordering Data**  
SMC 50 Ohm Receptacle Jack - Single Hole Reverse Mount Straight

Part Number	Dimension						Finish	Mtg. Hole
	A		B		C (Hex)			
	mm	in.	mm	in.	mm	in.		
37JR108-1	14.99	0.590	10.92	0.430	6.35	0.250	Gold	D12

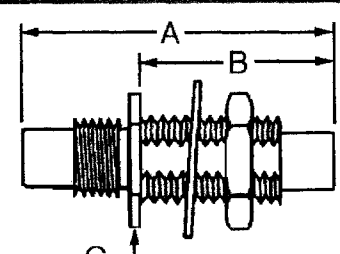
**SMC 50 Ohm Adapters**



**Description**  
SMC 50 & 75 Ohm Adapter - Straight

**Ordering Data**  
SMC 50 & 75 Ohm Adapter - Straight

Part Number	Adapter Ends	Dimension				Finish	Note
		A		B (Hex)			
		mm	in.	mm	in.		
37A102-1	Plug-Plug	21.34	0.840	6.35	0.250	Gold	50 Ohm
37A104-2	Plug-Plug	21.34	0.840	7.87	0.310	Gold	75 Ohm



**Description**  
SMC 50 & 75 Ohm Adapter - Single Hole Mount Straight

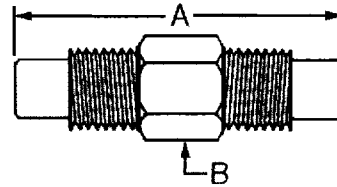
**Ordering Data**  
SMC 50 & 75 Ohm Adapter - Single Hole Mount Straight

Part Number	Adapter Ends	Dimension						Finish	Mtg. Hole	Note
		A		B		C (Hex)				
		mm	in.	mm	in.	mm	in.			
37AS100-1	Jack-Jack	17.02	0.670	10.16	0.400	9.65	0.380	Gold	D9	75 Ohm
37AS101-1	Jack-Jack	17.02	0.670	10.16	0.400	6.35	0.250	Gold	D12	50 Ohm

To obtain Assembly Instructions contact Berg Electronics at 1-800-237-2374 Ext.-2800

SMC Series  
50 Ohm - Adapter/Termination

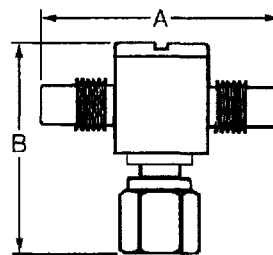
**Description**  
SMC 50 Ohm Adapter - Straight



**Ordering Data**  
SMC 50 Ohm Adapter - Straight

Part Number	Adapter Ends	Dimension				Finish
		A		B (Hex)		
		mm	in.	mm	in.	
37A101-1	Jack-Jack	17.02	0.670	6.35	0.250	Gold

**Description**  
SMC 50 Ohm Adapter - Tee

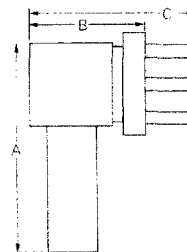


**Ordering Data**  
SMC 50 Ohm Adapter - Tee

Part Number	Adapter Ends	Dimension				Finish
		A		B		
		mm	in.	mm	in.	
37AT100-1	Jack-Jack-Plug	24.64	0.970	16.26	0.640	Gold
37AT101-1	Jack-Jack-Jack	21.84	0.860	16.26	0.640	Gold
37AT102-1	Jack-Plug-Jack	21.84	0.860	17.02	0.670	Gold
37AT105-1	Plug-Jack-Plug	24.13	0.950	16.26	0.640	Gold

**SMC 50 Ohm Termination**

**Description**  
SMC 50 Ohm Termination Jack - Feed Through Right-Angle



**Ordering Data**  
SMC 50 Ohm Termination Jack - Feed Through Right-Angle

Part Number	Cable RG-/U	Dimension						Finish	Mtg. PCB
		A		B		C			
		mm	in.	mm	in.	mm	in.		
37T100-1	174, 316	15.88	0.625	8.76	0.345	12.70	0.500	Gold	A1

To obtain Assembly Instructions contact Berg Electronics at 1-800-237-2374 Ext.-2800