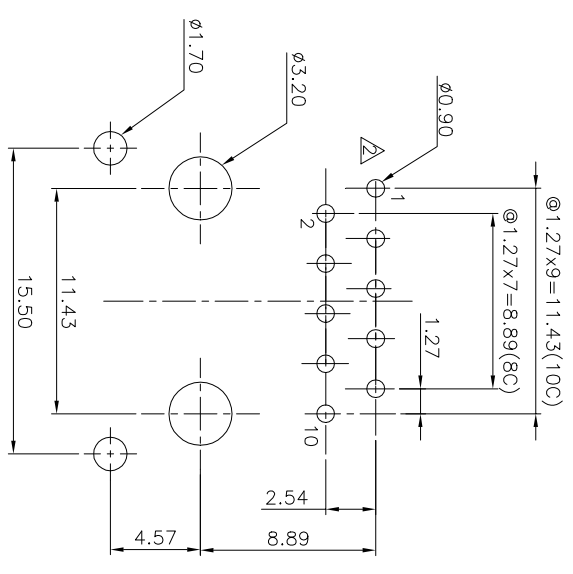
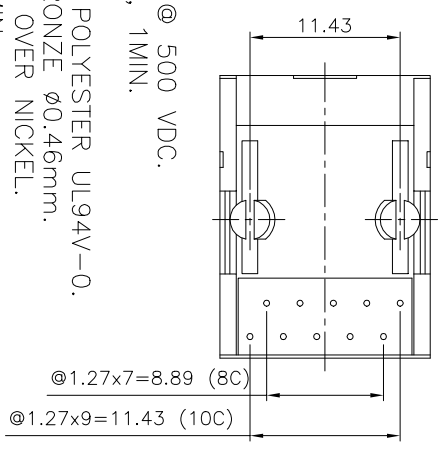
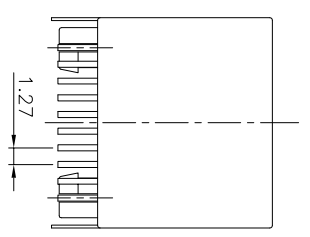
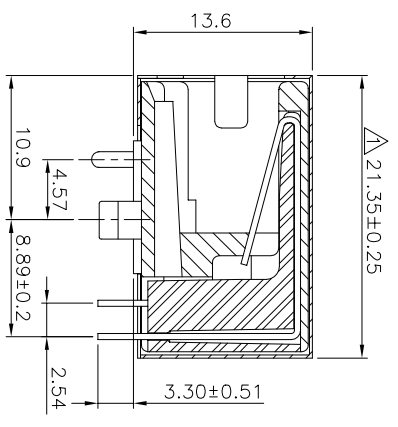
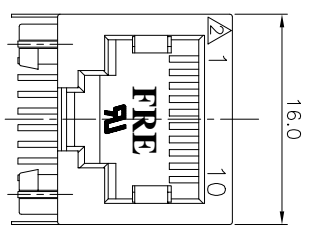


REVISION RECORD				
REV	ECO	DESCRIPTION	DRT	CHKD
△		MODIFY DIMENSION	1/9/02	
△		PCB Layout Modify	12/01/05	



NOTES:

ELECTRICAL:

- VOLTAGE RATING : 125 VAC RMS.
- CURRENT RATING : 1.5 AMP.
- CONTACT RESISTANCE : 35 MILLIOHMS MAX.
- INSULATION RESISTANCE: 1000 MEGOHMS MIN @ 500 VDC.
- DIELECTRIC STRENGTH : 1000 VAC RMS 60HZ, 1MIN.

MECHANICAL:

- HOUSING MATERIAL : GLASS FILLED POLYESTER UL94V-0.
- CONTACT MATERIAL : PHOSPHOR BRONZE Ø0.46mm.
- PLATING : GOLD PLATING OVER NICKEL.
- OPERATING LIFE : 750 CYCLES MIN.
- PCB RETENTION PRE-SOLDER : 1 LB MIN.
- PCB RETENTION POST-SOLDER: 10 LBS MIN.

ENVIRONMENTAL:

- STORAGE : -40°C TO +85°C.
 - OPERATION: -40°C TO +85°C.
- MATES WITH MODULAR PLUG CONFORMING TO FCC PART 68, SUBPART F.
UL & CUL FILE NO. E163191

PART NUMBER: E590X-1X012X

NO. OF CONTACT:

- 8-8C
- 1-10C

SHIELD:

- 3-TIN
- 5-NICKEL
- C-GOLD FLASH
- D-TINNED GROUNDING TAB

- 1-3u"
- 3-15u"
- 5-50u"
- 7-Pd30u"
- 2-6u"
- 4-30u"
- 6-Pd20u"
- 8-Pd10u"

DETACHED LISTS

MM	(INCH)	DTFO CHL	DATE
0 ±0.2		CHKD Tumbel	12/09/05
.00 ±0.15		MFO	DATE
.000 ±0.075		APPLV	DATE

TITLE		FULL RISE ELECTRONIC CO., LTD	
DRAWING NO. GE593A99		20.57 PCB JACK 10P	
/PART NO. SEE NOTE		SIZE A3	
DO NOT SCALE DRAWING		REV 2	