

New Jersey Semi-Conductor Products, Inc.

20 STERN AVE.
 SPRINGFIELD, NEW JERSEY 07081
 U.S.A.

TELEPHONE: (201) 376-2922
 (212) 227-6005
 TELEX: 13-8720

PARAMETERS

1N5054

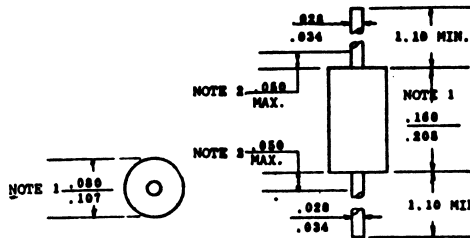
SI RECTIFIER, $1A < I(O)/I(F) \leq 2A$

Description: Si Rectifier, $1A < I(O)/I(F) \leq 2A$

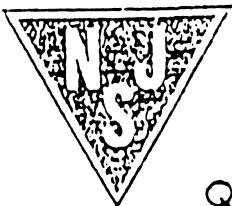
Manufacturer.....	
Mil/High-Rel? (Y/N).....	
I(out) (If AVG) Max.....	1.5
@Temp. (test) (x°C).....	40
VRRM.....	1.0k
1-Cycle Surge Current (A).....	50%
Vf Max.....	1.3
@If (test).....	1.5
@Temp. (test) for Vf).....	40
Ir @25x°C.....	
@Volts (test) (V).....	1.0k
Ir @ Diff. Temp (A).....	.50m
@Temp (test) (x°C).....	170
Oper. Temp (x°C) Max.....	170
Pkg Style.....	DO-41
Surface Mounted (Y/N).....	N

* @ above 125x°C 2 It(rms)

DO41



- NOTES:
1. Package contour optional within cylinder of diameter .080 and length .107. Slugs if any, shall be included within this cylinder but shall not be subject to the minimum limit of .080.
 2. Lead diameter not controlled in this zone to allow for flash, lead finish build up, and minor irregularities other than slugs.



Quality Semi-Conductors