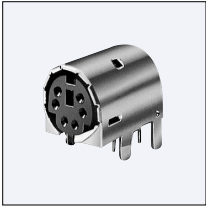


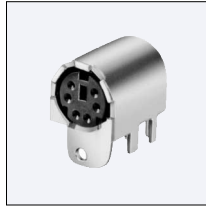
Horizontal Sockets

TCS7726 Series Low-Profile PC Board Type

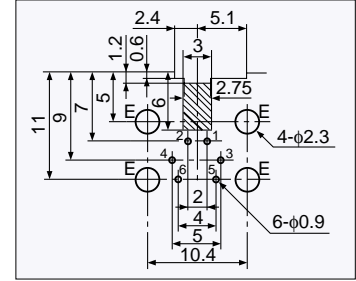
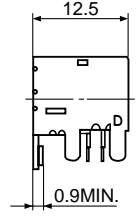
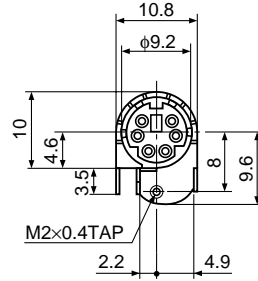
$h=4.6\text{mm}$



A-Type
TCS7726-162036
EMI-Proof



B-Type
TCS7726-562236
EMI-Proof



[Hole Layout](#)
(Bottom View)

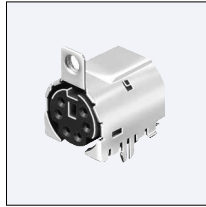
*Combinations with plugs: TCP8300 Series (Page 8) [TCS7726-562236]

TCS7736 Series Low-Profile SMT Type

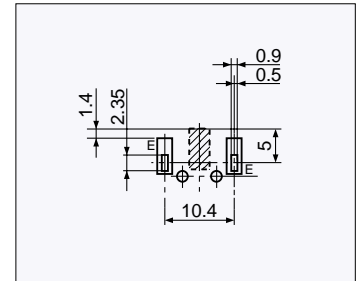
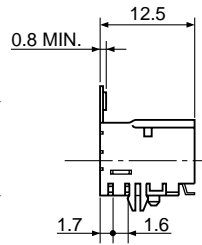
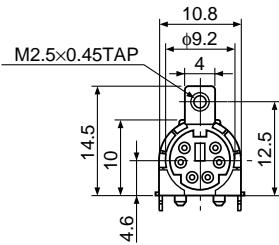
$h=4.6\text{mm}$



A-Type
TCS7736-942036
EMI-Proof



B-Type
TCS7736-862336
EMI-Proof

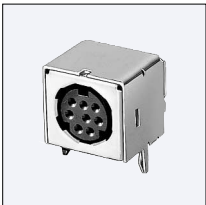


[Land Layout](#)
(Top View)

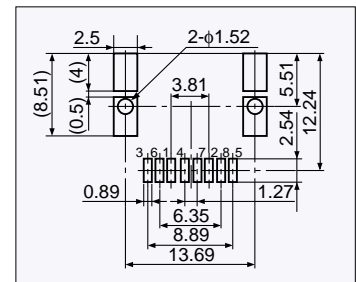
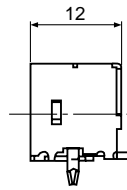
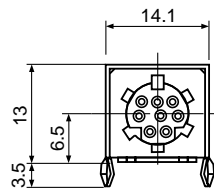
*Combinations with plugs: TCP8300 Series (Page 8) [TCS7736-862236]

TCS7400 Series SMT Type

$h=6.5\text{mm}$



TCS7480-01-218
EMI-Proof



[Hole Layout](#)
(Bottom View)

*Combinations with plugs: TCP7100, TCP8300 Series (Page 8)

Number of Contact		4			6			8a		
Arrangement										
TCS7726 Series	A-Type (without Frang)	TCS7726-142036			TCS7726-162036			TCS7726-182036		
	B-Type (with Frang)	TCS7726-562236			TCS7726-562236			TCS7726-582236		
TCS7400 Series		TCS7440-01-218			TCS7460-01-218			TCS7480-01-218		