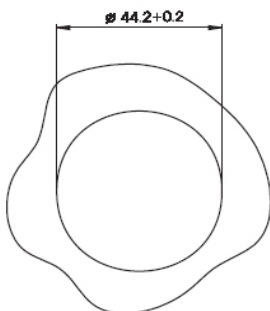


Shielded cable/flange connector, short version

M 40, cable entry 17.0—21.0 mm

PE connecting earth pin to the shell
6 position male (2+3+PE) with hex
flange, rear mount, O-ring and hex nut
from the front



Technical details:



Shell material: zinc die-cast, nickel plated

Insert material: Thermoplastic PA 66 UL94V0

Contact material: CuZn

Contact plating: nickel + gold plated

The following contacts can be used, but not included
in this part number:

2 x 2.0 mm contacts

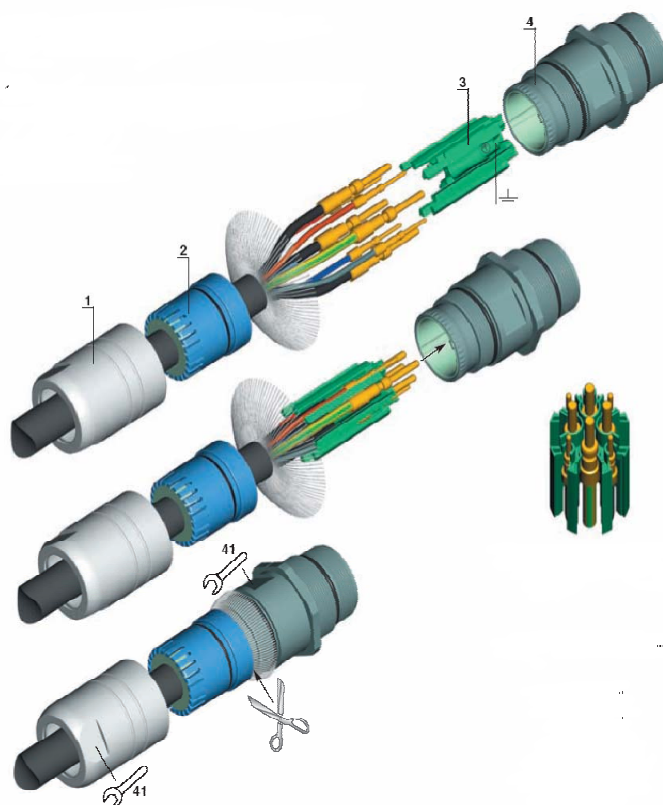
24-17AWG	SM-20KP006
18-16AWG	SM-20KP005
17-14AWG	SM-20KP007
14-12AWG	SM-20KP008

4 x 3.6 mm contacts

17-14AWG	SM-36KP005
14-12AWG	SM-36KP006
10-8AWG	SM-36KP007

Protection: IP 67 (mated)
O-rings/gaskets: Fluor rubber (FPM)
Temperature: - 40°C (-40°F)
+ 125°C (+ 257°F)

Rated current: 9/70 Amp
Rated voltage: 250/630 Volt
Insulation resistance: $\geq 10^{12} \Omega$



PHOENIX CONTACT
INSPIRING INNOVATIONS

DRAWN BY: Se
REVISED: 00-00-00

DATE: 02-28-07

DESCRIPTION: Cable/flange connector M 40

PART NUMBER: SM-5EP1N8AQ004