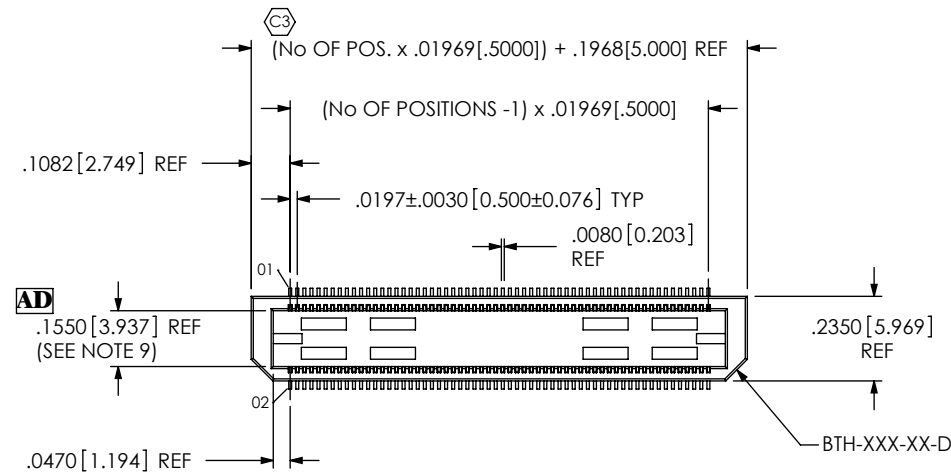
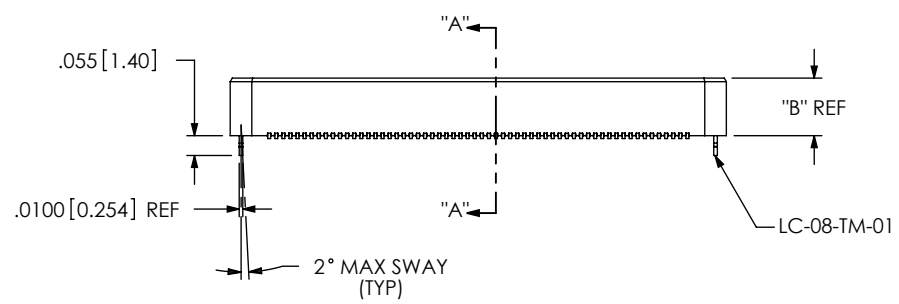


DO NOT SCALE FROM THIS PRINT

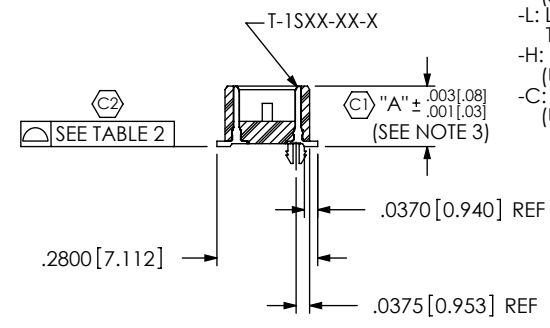


BTH-XXX-XX-X-D-XX

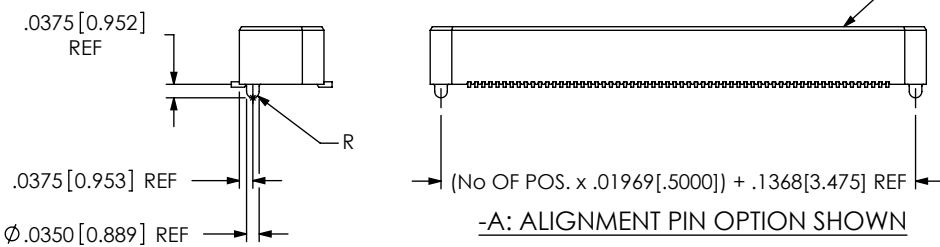
- No OF POSITIONS**
030, **050, 060, 090, *120, *150 (PER ROW)
LEAD STYLE -02 ONLY: 030 - 180 MULTIPLES OF 10
*SEE NOTE 7
- LEAD STYLE**
-01: .1680[4.267]
-02: .2861[7.264] (030 - 180 POSITIONS AVAILABLE)
-03: .4042[10.267]
-04: .6000[15.240]
-05: .7180[18.237]
-06: .8360[21.234]
-09: .5224[13.269]
- *** = 50 POS. ONLY AVAILABLE FOR -01 AND -02 LEAD STYLE (REF ASP-65267-02)
- OPTION**
-A: ALIGNMENT PINS (USE BTH-XXX-XX-D-A FOR STYLES -01 & -02) (FOR STYLES -03 THRU -09, SEE TABLE 4 & FIG. 4, SHEET 3)
-LC: LOCKING CLIPS (SEE NOTE 8) (USE LC-08-TM-01)
-K: POLYIMIDE FILM (USE K-500-300, SEE FIG. 2) (AVAILABLE ON STYLES -01 THRU -04 & -09 ONLY) (SEE NOTE 6)
-TR: TAPE & REEL (120 POS MAX) [N/A ON -05 THRU -06]
- ROW SPECIFICATION**
-D: DOUBLE (USE BTH-XXX-XX-D & BTHH-XXX-XX-D)
- PLATING SPECIFICATION**
-F: FLASH SELECTIVE GOLD WITH MATTE TIN TAILS (USE T-1SXX-XX-F) (SEE NOTE 5)
-L: LIGHT SELECTIVE GOLD WITH MATTE TIN TAILS (USE T-1SXX-XX-L)
-H: HEAVY GOLD (USE T-1SXX-XX-H)
-C: ELECTRO-POLISHED SELECTIVE (USE T-1SXX-XX-C)



-LC: LOCKING CLIP OPTION SHOWN



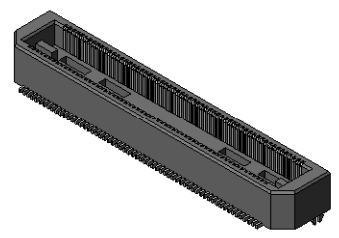
SECTION "A"-"A"



-A: ALIGNMENT PIN OPTION SHOWN

NOTES:

1. Ⓢ REPRESENTS A CRITICAL DIMENSION.
2. MINIMUM PUSHOUT FORCE: 6 OZ. FOR STYLES -01 & -02 8 OZ. FOR STYLES -03 THRU -09
3. MAXIMUM VARIANCE OF .002[.05].
4. LEAD STYLES -03 THRU -09: TOP BODY (BTH) CANNOT HAVE -A OPTION.
5. -L PLATING CAN BE SUBSTITUTED FOR -F PLATING.
6. IF PART OPTION IS PACKAGED IN TRAY, USE K-DOT-.276-.375-.005.
7. FOR NEW APPLICATIONS REQUIRING THESE POSITIONS, PLEASE CONTACT SAMTEC INTERCONNECT PROCESSING GROUP.
8. DUE TO THE HIGH AMOUNT OF INSERTION FORCE NEEDED, THE -LC OPTION IS NOT COMPATIBLE WITH AUTO PLACEMENT. SAMTEC RECOMMENDS MANUAL PLACEMENT FOR ALL ASSEMBLIES WITH THE -LC OPTION.
9. MINIMUM ROW TO ROW IS .152 [3.86], PIN CAN EXTEND PAST THE WALL: .003 [.08].

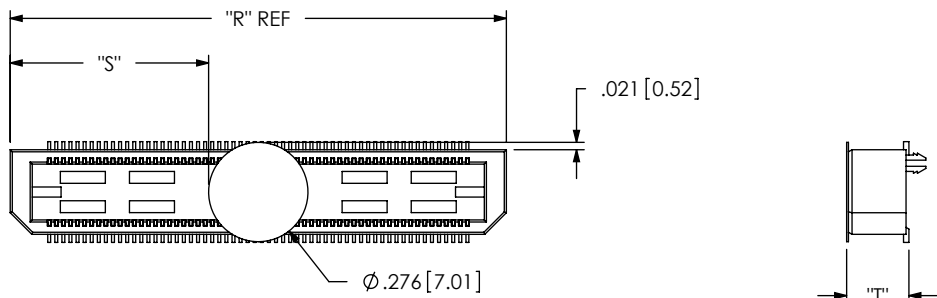


NO. OF POSITIONS	COPLANARITY
-030 THRU -090	.004[.10]
-120 THRU -150	.006[.15]

STYLE	"A"			"B"		MATED HEIGHT WITH BSH
	"A"	"B"	BODY	TERMINAL	TERMINAL	
-01	.1680[4.267]	.1600[4.064]	BTH-XXX-01-D(-A)	T-1S39-01-X	T-1S39-01-X	.1969[5.001] REF
-02	.2861[7.267]	.2781[7.064]	BTH-XXX-02-D(-A)	T-1S59-02-X	T-1S59-02-X	.3150[8.001] REF

UNLESS OTHERWISE SPECIFIED, DIMENSIONS ARE IN INCHES. TOLERANCES ARE: DECIMALS ANGLES .XX: ±.01 [.3] .XXX: ±.005 [.13] .XXXX: ±.0020 [.051]	PROPRIETARY NOTE THIS DOCUMENT CONTAINS INFORMATION CONFIDENTIAL AND PROPRIETARY TO SAMTEC, INC. AND SHALL NOT BE REPRODUCED OR TRANSFERRED TO OTHER DOCUMENTS OR DISCLOSED TO OTHERS OR USED FOR ANY PURPOSE OTHER THAN THAT WHICH IT WAS OBTAINED WITHOUT THE EXPRESSED WRITTEN CONSENT OF SAMTEC, INC.		
		520 PARK EAST BLVD. NEW ALBANY, IN 47150 PHONE: 812-944-6733 FAX: 812-948-5047 e-Mail: info@SAMTEC.com code: 53322	
MATERIAL: DO NOT SCALE DRAWING SHEET SCALE: 1:0.533333 DESCRIPTION:		.75mm DOUBLE ROW TERMINAL ASSEMBLY	
INSULATOR: BLACK LCP FLAMMABILITY RATING: UL 94V-0		DWG. NO. BTH-XXX-XX-X-D-XX	
TERMINAL: PHOS BRONZE		BY: DEAN P 5/28/1999 SHEET 1 OF 3	
F:\DWG\MISC\VKMG\BTH-XXX-XX-X-D-XX-MKT.SLDDRW			

FIG. 2
 -K: POLYIMIDE FILM PAD OPTION
 [USE K-500-300]
 (SEE NOTE 6)



STYLE	"T"
-01	.173[4.39]
-02	.291[7.39]
-03	.409[10.39]
-04	.605[15.37]
-09	.527[13.39]

NOTE: "R" = (No OF POSITIONS x .01969[.5000]) + .1968[5.000]
 "S" = (("R" - .276[7.01]) / 2) ± .020[.51]

PACKAGING VIEW (PARTS TO HAVE POSITION #01 LOADED IN SAME DIRECTION AS ARROW)			
[STYLES -01 & -02]	[STYLES -03, -04, & -09]	[STYLE -05]	[STYLE -06]
TUBE: PT-1-24-01-78 PLUG: TP-03	TUBE: PT-1-24-01-98 PLUG: TP-26	TUBE: PT-1-24-02-105 PLUG: TP-26	TUBE: PT-1-24-01-105 PLUG: TP-26

F:\DWG\MISC\MKTG\BTH-XXX-XX-X-D-XX-MKT.SLDDRW

<p>PROPRIETARY NOTE THIS DOCUMENT CONTAINS INFORMATION CONFIDENTIAL AND PROPRIETARY TO SAMTEC, INC. AND SHALL NOT BE REPRODUCED OR TRANSFERRED TO OTHER DOCUMENTS OR DISCLOSED TO OTHERS OR USED FOR ANY PURPOSE OTHER THAN THAT WHICH IT WAS OBTAINED WITHOUT THE EXPRESSED WRITTEN CONSENT OF SAMTEC, INC.</p> <p>DO NOT SCALE DRAWING</p> <p>SHEET SCALE: 1.875:1</p>	
	<p>520 PARK EAST BLVD, NEW ALBANY, IN 47150 PHONE: 812-944-6733 FAX: 812-948-5047 e-Mail: info@SAMTEC.com code: 55322</p>
	<p>DESCRIPTION: .5mm DOUBLE ROW TERMINAL ASSEMBLY</p>
	<p>DWG. NO. BTH-XXX-XX-X-D-XX</p>
<p>BY: DEAN P 5/28/1999</p>	<p>SHEET 2 OF 3</p>

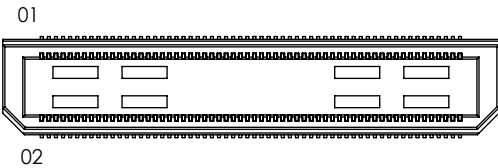


TABLE 4								MATED HEIGHT WITH BSH-01
STYLE	SEE FIGURE	"C" OVERALL HEIGHT	TERMINAL	TOP BODY (SEE NOTE 4)	BOTTOM SPACER BODY (-LC OR NONE)	BOTTOM SPACER BODY (-A)		
-03	3	.4042 [10.267]	T-1S60-03-X	BTH-XXX-02-D	BTHH-XXX-01-D	BTHH-XXX-01-D-A	.433 [11.00] REF	
-04	3	.6000 [15.240]	T-1S60-04-X	BTH-XXX-02-D	BTHH-XXX-01-D	BTHH-XXX-01-D-A	.630 [16.00] REF	
-05	4	.7180 [18.237]	T-1S60-05-X	BTH-XXX-02-D	BTHH-XXX-03-D	BTHH-XXX-03-D-A	.748 [19.00] REF	
-06	4	.8360 [21.234]	T-1S60-06-X	BTH-XXX-02-D	BTHH-XXX-03-D	BTHH-XXX-03-D-A	.866 [22.00] REF	
-09	3	.5224 [13.269]	T-1S60-09-X	BTH-XXX-02-D	BTHH-XXX-01-D	BTHH-XXX-01-D-A	.551 [14.00] REF	

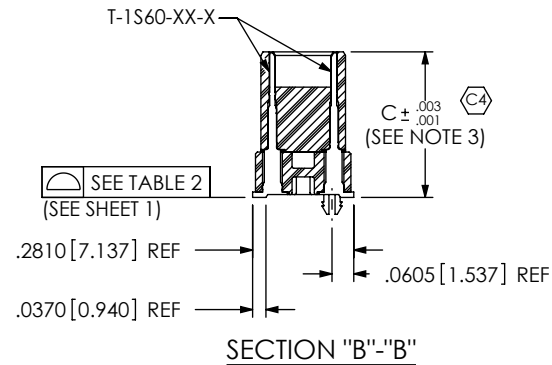
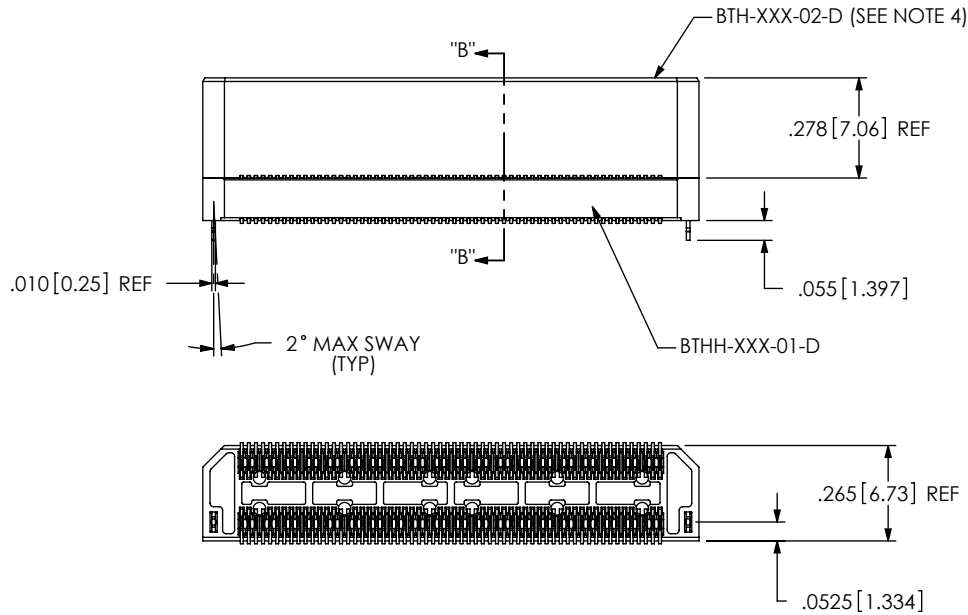


FIG. 3
BTH-060-03-X-D-LC SHOWN
(STYLES -03, -04, & -09)
(DIFFERENT AS SHOWN, OTHERWISE SAME AS FIG. 1)

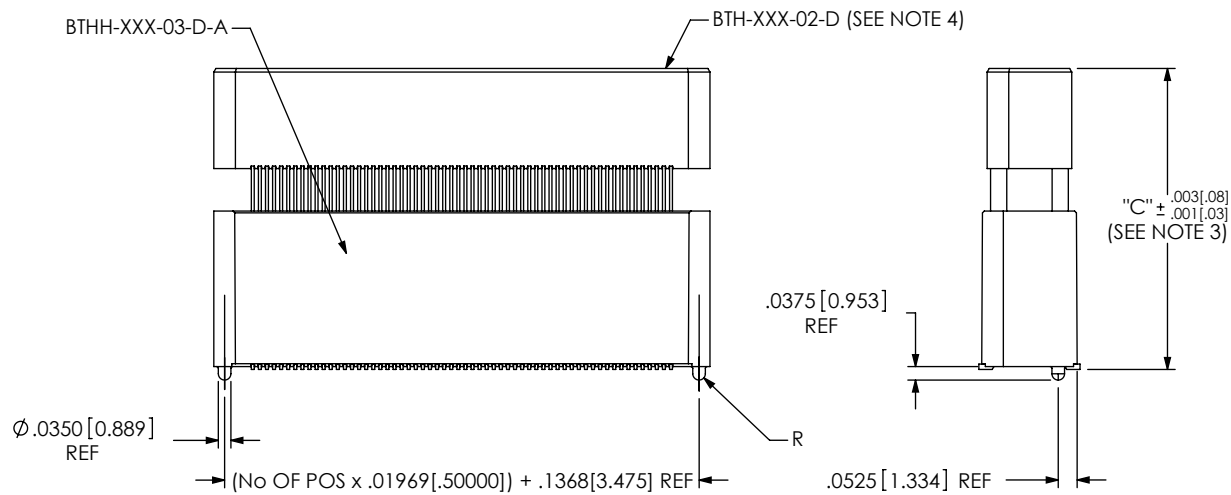


FIG. 4
-A: ALIGNMENT PIN OPTION
BTH-060-06-X-D-A SHOWN
(STYLES -05 & -06)
(DIFFERENT AS SHOWN, OTHERWISE SAME AS FIG. 1)

F:\DWG\MISC\MKTG\BTH-XXX-XX-X-D-XX-MKT.SLDDRW

PROPRIETARY NOTE
THIS DOCUMENT CONTAINS INFORMATION CONFIDENTIAL AND PROPRIETARY TO SAMTEC, INC. AND SHALL NOT BE REPRODUCED OR TRANSFERRED TO OTHER DOCUMENTS OR DISCLOSED TO OTHERS OR USED FOR ANY PURPOSE OTHER THAN THAT WHICH IT WAS OBTAINED WITHOUT THE EXPRESSED WRITTEN CONSENT OF SAMTEC, INC.

DO NOT SCALE DRAWING

SHEET SCALE: 1:0.533333



520 PARK EAST BLVD, NEW ALBANY, IN 47150
PHONE: 812-944-6733 FAX: 812-948-5047
e-Mail: info@SAMTEC.com code: 55322

DESCRIPTION:
.5mm DOUBLE ROW TERMINAL ASSEMBLY

DWG. NO. BTH-XXX-XX-X-D-XX

BY: DEAN P 5/28/1999 SHEET 3 OF 3