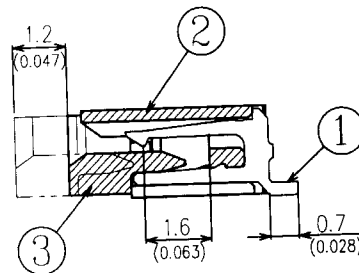
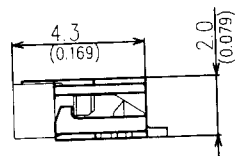
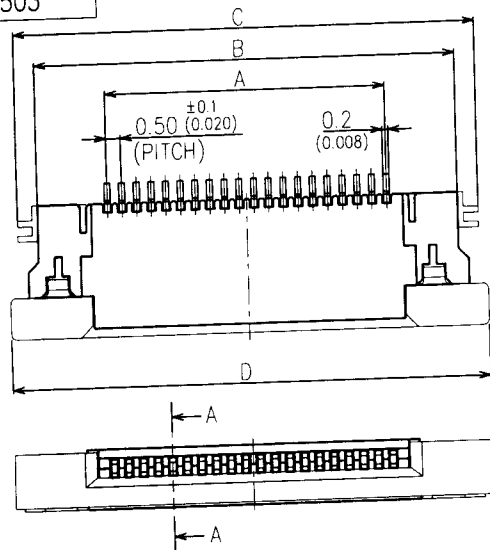
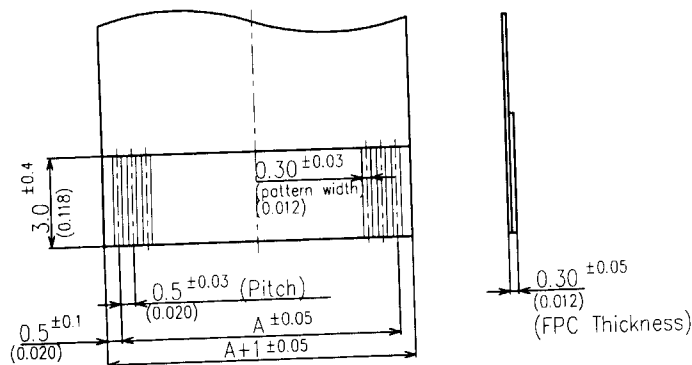
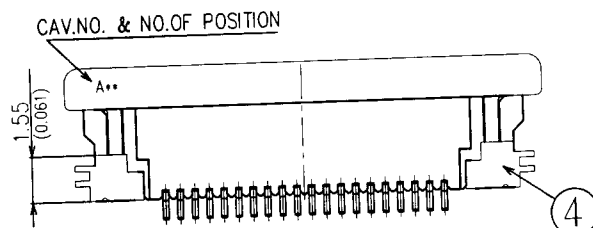


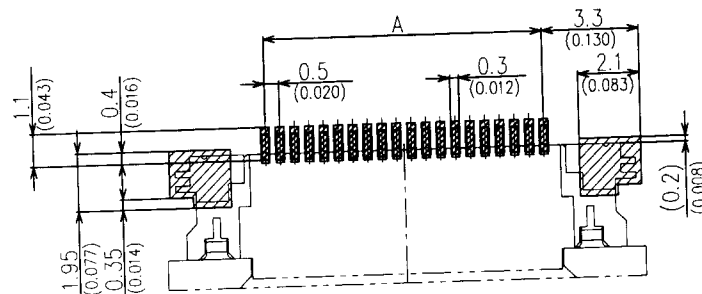
PRODUCT NO.  
55503



SECTION A-A(10/1)



PCB LAYOUT (REF.)



### ORDERING INFORMATION

XXXXX-\*\* S-L S S

SERIES

NO. OF POSITION

SOCKET CONTACT

ARRAY SINGLE

SMT TYPE

ANGLE TYPE



REV	DESCRIPTION	REVD BY	DATE
A	RLSD ECR S00159	KP TAY	22SEP00

PRODUCT NO.	NO. of POSITION	A	B	C	D
55503	24	11.5 (0.453)	16.3 (0.642)	17.7 (0.697)	18.3 (0.720)
	25	12.0 (0.472)	16.8 (0.661)	18.2 (0.717)	18.8 (0.740)
	26	12.5 (0.492)	17.3 (0.681)	18.7 (0.736)	19.3 (0.760)
	27	13.0 (0.512)	17.8 (0.701)	19.2 (0.756)	19.8 (0.780)
	28	13.5 (0.531)	18.3 (0.720)	19.7 (0.776)	20.3 (0.799)
	29	14.0 (0.551)	18.8 (0.740)	20.2 (0.795)	20.8 (0.819)
	30	14.5 (0.571)	19.3 (0.760)	20.7 (0.815)	21.3 (0.834)
	31	15.0 (0.590)	19.8 (0.780)	21.2 (0.835)	21.8 (0.858)
	32	15.5 (0.610)	20.3 (0.799)	21.7 (0.854)	22.3 (0.878)
	33	16.0 (0.630)	20.8 (0.819)	22.2 (0.874)	22.8 (0.898)
	34	16.5 (0.650)	21.3 (0.834)	22.7 (0.894)	23.3 (0.917)
	35	17.0 (0.669)	21.8 (0.858)	23.2 (0.913)	23.8 (0.937)
	36	17.5 (0.689)	22.3 (0.878)	23.7 (0.933)	24.3 (0.957)
	37	18.0 (0.709)	22.8 (0.898)	24.2 (0.953)	24.8 (0.976)
	38	18.5 (0.728)	23.3 (0.917)	24.7 (0.972)	25.3 (0.996)
	39	19.0 (0.748)	23.8 (0.937)	25.2 (0.992)	25.8 (1.016)
	40	19.5 (0.768)	24.3 (0.957)	25.7 (1.012)	26.3 (1.035)

NOTE :

1. 2000ea/Paper Bobbin

4	HOLD DOWN	Brass	SnPb/Ni Plating	2	-----
3	FLIP INSULATOR	GF-PPS	-----	1	UL94V-0(BROWN)
2	BODY INSULATOR	GF-PA46	-----	1	UL94V-0(BLACK)
1	SOCKET CONTACT	Phosphor Bronze	SnPb/Ni Plating	n	-----
ITEM	DESCRIPTION	MATERIAL	FINISH	QTY	REMARKS

CUSTOMER COPY				 THIRD ANGLE PROJECTION				 FCI FRAMATOME GROUP				ELECTRONICS									
DO NOT SCALE DRAWING				DIMENSIONAL LIMITS APPLY AFTER PLATING (IF SPECIFIED)				DESCRIPTION													
METRIC		<input checked="" type="checkbox"/>		INCH				NAME		DATE		0.5mm FPC CONNECTOR (Upside Contact)									
GENERAL TOLERANCE						DRAWN		KP TAY		22SEP00		SCALE		SIZE		DRAWING NO.		REV		SHEET	
MILLIMETER		INCH		ANGLE		CHECKED		J. Tay		22/9/00		4 : 1		A4		55503		A		1 of 2	
X.X ±0.25		.XX ±0.10		±0°30'		XXX ±0.13		.XXX ±0.05													
XXX ±0.05		.XXX ±0.020				APPROVED		J. Tay		22/9/00											

ALL RIGHT RESERVED. REPRODUCTION OR ISSUE TO THIRD PARTIES IN ANY FORM WHATEVER IS NOT PERMITTED WITHOUT WRITTEN AUTHORITY FROM THE PROPRIETOR. PROPERTY OF F.C.I. COPYRIGHT F.C.I.

**PDM: Rev:A**

STATUS: **Released**

Printed: Sep 06, 2002

4

3

2

•

10

1



SECTION A-A



1

AD

3. PEEL STRENGTH OF COVER TAPE : 10~70g

XXXXX-\*\*SLS

PRODUCT NO. | NO. OF POSITION | SOCKET CONTACT | | | |

| | | | |

| | | |

| | |

| |

|

ARRAY SINGLE

SMT TYPE

ANGLE TYPE

4	BOBBIN	PAPER	-----	1	-----
3	COVER TAPE	POLYPROPYLENE POLYSTYRENE	-----	1	-----
2	EMBOSSSED CARRIER	POLYESTER POLYSTYRENE	-----	1	-----
1	55502--**S--LSS	-----	-----	2000	-----
ITEM	DESCRIPTION	MATERIAL	FINISH	QTY	REMARKS




THIRD ANGLE PROJECTION



**ELECTRONICS**  
**FCI**  
**FRAMATOME GROUP**

SCALE	SIZE	DRAWING NO.	REV	SHEET
NTS	A4	55503	A	2 of 2

CUSTOMER COPY			
DO NOT SCALE DRAWING			
METRIC	✓	INCH	
GENERAL TOLERANCE			
MILLIMETER	INCH		ANGLE
XX ±0.25	.XXX ±0.010		±0.30
XXX ±0.13	.XXX ±0.005		
XXXX ±0.05	.XXXX ±0.0020		

 <b>THIRD ANGLE PROJECTION</b>		
<b>DIMENSIONAL LIMITS APPLY AFTER PLATING (IF SPECIFIED)</b>		
	NAME	DATE
DRAWN	KP TAY	22SEP00
CHECKED	<i>[Signature]</i>	22/9/00
APPROVED	<i>[Signature]</i>	22/9/00

INDEX	SHEET NO.
ALL RIGHT RESERVED. REPRODUCTION OR ISSUE TO THIRD PARTIES IN ANY FORM WHATEVER IS NOT PERMITTED WITHOUT WRITTEN AUTHORITY FROM THE PROPRIETOR. PROPERTY OF F.C.I. COPYRIGHT F.C.I.	

**PDM: Rev:A**

STATUS: **Released**

Printed: Sep 06, 2002