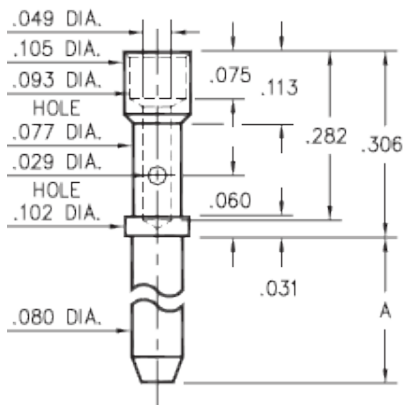


**Product Number: 3601-1-07-01-00-00-08-0**



Basic Part Number	Pin Length A
3601-1	.200
3601-2	.375
3601-3	.500

**Description:**

**3601** - Wire Crimp Pin

**Packaging:**

Packaged in Bulk

**3601-X-07-XX-00-00-08-0**  
#20A Crimp barrel

Mill-Max Part Number	Shell Plating	Contact Plating	RoHS Compliant
3601-1-07-01-00-00-08-0	200 - 300 μ" Tin/Lead over Nickel	00	<b>NO</b>

**SHELL MATERIAL:**

**BRASS ALLOY (UNS C36000) per ASTM B 16**

**Properties of BRASS ALLOY:**

- Chemical composition: Cu 61.5%, Zn 35.4%, Pb 3.1%†
- Hardness as machined: 80-90 Rockwell B
- Density: .307 lbs/in<sup>3</sup>
- Electrical conductivity: 26% IACS\*
- Melting point: 900°C/885°C (liquidus/solidus)

†(3 to 4% lead is used to permit "free machining" and is permitted by EC Directive 2002/95Annex 6; so all pin materials are RoHS compliant)

\*International Annealed Copper Standard, i.e. as a % of pure copper.