

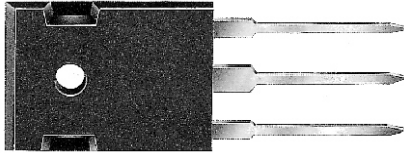
SR3020 thru SR3060

SK3020 thru SK3060

MINIATURE SCHOTTKY BARRIER  
RECTIFIER



CHENG-YI  
ELECTRONIC



**FEATURES**

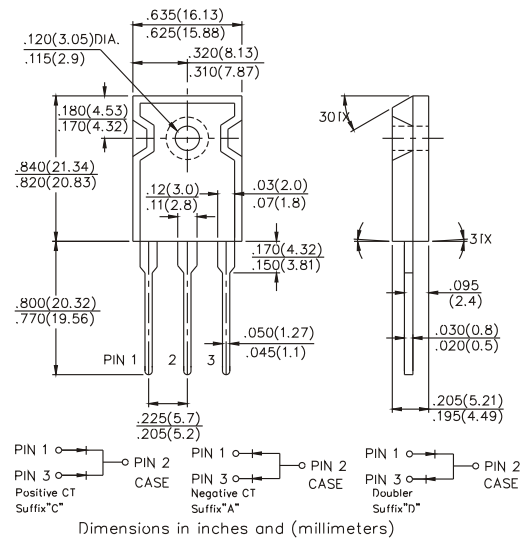
- Low switching noise
- Low forward voltage drop
- Low thermal resistance
- High current capability
- High switching capability
- High surge capability
- High reliability

**MECHANICAL DATA**

- Case: TO-3P molded plastic
- Epoxy: UL 94V-0 rate flame retardant
- Lead: MIL-STD-202 method 208 guaranteed
- Mounting position: Any

VOLTAGE RANGE  
20 TO 60 Volts  
CURRENT  
30.0 Amperes

**TO-3P**



**MAXIMUM RATINGS AND ELECTRICAL CHARACTERISTICS**

Ratings at 25°C ambient temperature unless otherwise specified.  
Single phase, half wave, 60Hz, resistive or inductive load.  
For capacitive load, derate current by 20%.

**MAXIMUM RATINGS** ( At TA=25°C unless otherwise noted)

	Symbol	SR3020	SR3030	SR3035	SR3040	SR3045	SR3050	SR3060	UNITS	
Ratings	Symbol	SK3020	SK3030	SK3035	SK3040	SK3045	SK3050	SK3060	UNITS	
Maximum Recurrent Peak Reverse Voltage	V <sub>RRM</sub>	20	30	35	40	45	50	60	Volts	
Maximum RMS Voltage	V <sub>RMS</sub>	14	21	25	28	32	35	42	Volts	
Maximum DC Blocking Voltage	V <sub>DC</sub>	20	30	35	40	45	50	60	Volts	
Maximum Average Forward Rectified Current .375" (9.5mm) lead length	I <sub>O</sub>	30.0							Amps	
Peak Forward Surge Current, 8.3 ms single half sine-wave superimposed on rated load (JEDEC method)	I <sub>FSM</sub>	300							Amps	
Typical Thermal Resistance (Note 1)	R <sub>θJC</sub>	1.4							°C / W	
Operating Temperature Range	T <sub>J</sub>	-65 to +125				-65 to +150				°C
Storage and Operating Temperature Range	T <sub>STG</sub>	-65 to +150							°C	

**ELECTRICAL CHARACTERISTICS** ( At TA=25°C unless otherwise noted)

Characteristics	Symbol	SK3020	SK3030	SK3035	SK3040	SK3045	SK3050	SK3060	UNITS	
Maximum Instantaneous Forward Voltage at 15.0A DC	V <sub>F</sub>	.65				.75				Volts
Maximum Average Reverse Current at Rated DC Blocking Voltage	@T <sub>A</sub> =25°C	5							mAmps	
	@T <sub>A</sub> =100°C	50							mAmps	

Notes : 1. Thermal Resistance Junction to Case.  
2. Suffix "A" = Common Anode.

SR3020 thru SR3060

SK3020 thru SK3060

MINIATURE SCHOTTKY BARRIER  
RECTIFIER



CHENG-YI  
ELECTRONIC

RATING AND CHARACTERISTICS CURVES  
SR3020 THRU SR3060  
SK3020 THRU SK3060

Fig.1 - TYPICAL FORWARD CURRENT DERATING CURVE

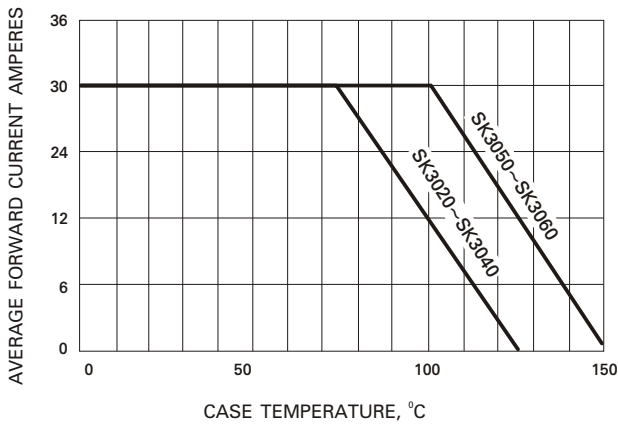


Fig.2 - TYPICAL REVERSE CHARACTERISTICS

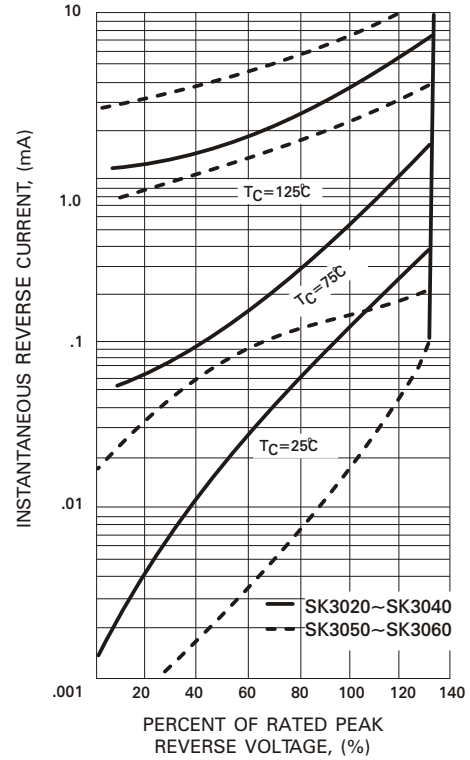


Fig.3 - MAXIMUM NON-REPETITIVE FORWARD SURGE CURRENT

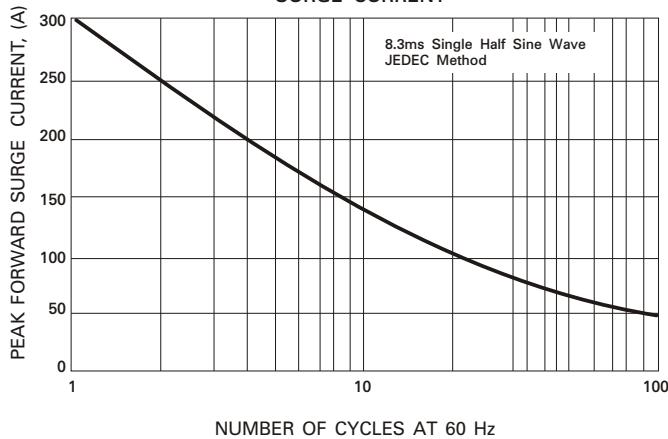


Fig.4 - TYPICAL INSTANTANEOUS FORWARD CHARACTERISTICS

