

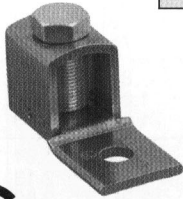
PANDUIT® Copper Single Barrel Lugs (Types CX, CS, & CD)

Copper Lugs

For Use With Copper Cables Only

Single Barrel Lugs—Type CX

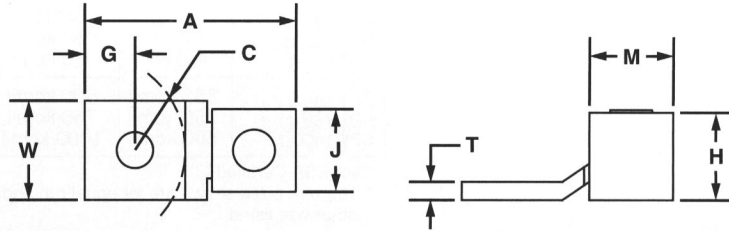
One-Hole
Straight Tongue
(Fixed)



Part Number	Copper Conductor Size Range	Current Rating (Amps)	Bolt Hole Size	Hex Key Size	Dimensions (In.)								Std. Pkg. Qty.
					A	W	G	C	T	M	H	J	
CX35-36-C	#14-#6	50	3/16"	**	1.02	.38	.23	.22	.07	.38	.48	.34	100
CX70-14-C	#14-#4*	70	1/4"	**	1.27	.50	.31	.28	.08	.50	.55	.46	100
CX125-14-Q	#4-#1/0*	125	1/4"	**	1.53	.62	.43	.41	.13	.62	.77	.57	25
CX225-56-Q	#2-#4/0	225	5/16"	9/16"	2.19	1.00	.56	.50	.13	1.00	1.13	.86	25
CX400-38-3	#4/0-500	400	3/8"	3/4"	3.16	1.50	.88	.81	.19	1.38	1.65	1.12	3

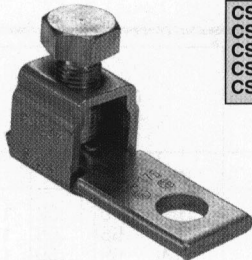
*And combinations

**Uses slotted head screw set



Single Barrel Lug—Type CS

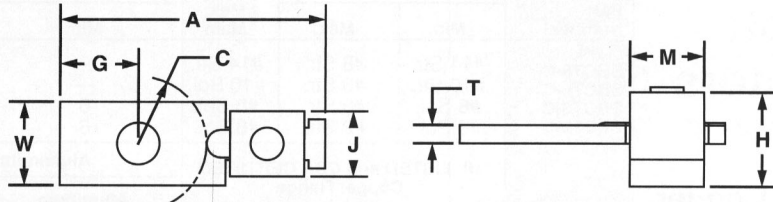
One-Hole
Straight Tongue



Part Number	Copper Conductor Size Range	Current Rating (Amps)	Bolt Hole Size	Hex Key Size	Dimensions (In.)								Std. Pkg. Qty.
					A	W	G	C	T	M	H	J	
CS25-18-C	#14-#10	25	1/8"	**	1.16	.32	.19	.56	.07	.28	.37	.32	100
CS35-36-C	#14-#6*	50	3/16"	**	1.14	.38	.22	.38	.07	.44	.50	.38	100
CSA70-14-C	#14-#4	70	1/4"	**	1.30	.50	.27	.44	.08	.42	.56	.50	100
CS70-14-C	#12-#1*	90	1/4"	**	1.50	.50	.25	.56	.08	.50	.65	.50	100
CS125-14-Q	#2-#1/0	125	1/4"	**	1.94	.62	.44	.56	.13	.62	.88	.62	25
CS175-38-Q	#4-#3/0	175	3/8"	9/16"	2.19	.75	.44	.81	.16	.75	1.04	.75	25
CS225-56-Q	#6-#4/0	225	5/8"	5/8"	2.38	1.00	.50	.69	.13	1.00	1.13	1.00	25
CS300-38-Q	#1-350	300	3/8"	3/4"	3.19	1.00	.50	1.13	.19	1.23	1.38	1.00	25
CS400-38-3	#1/0-500	400	3/8"	3/4"	3.88	1.50	.94	.75	.19	1.50	1.56	1.50	3
CS650-12-3	600-1000	650	1/2"	1-1/8"	5.13	2.00	1.19	1.63	.25	1.87	2.34	2.00	3

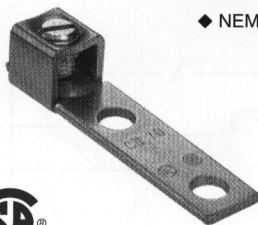
*And combinations

**Uses slotted head screw set



Single Barrel Lug—Type CD

Two-Hole
Straight Tongue



Part Number	Copper Conductor Size Range	Current Rating (Amps)	Bolt Hole Size	Hex Key Size	Dimensions (In.)								Std. Pkg. Qty.	
					A	W	G	S	C	T	M	H		J
CD35-36-Q	#14-#6*	50	3/16"	**	2.13	.38	.22	1.00	.38	.07	.44	.50	.33	25
CD70-14-Q	#12-#1	90	1/4"	**	2.26	.50	.25	1.00	.38	.09	.50	.65	.47	25
CD125-14-Q	#2-#1/0	125	1/4"	**	2.94	.62	.44	1.00	.50	.13	.62	.88	.62	25
CD225-56-Q	#6-#4/0	225	5/16"	5/8"	3.38	1.00	.50	1.00	.63	.13	1.00	1.17	.75	25
CD300-38-3	#1-350	300	3/8"	3/4"	4.94	1.00	.50	1.00	1.38	.19	1.23	1.39	1.00	3
CD400-38-3	#1/0-500	400	3/8"	3/4"	5.62	1.50	.94	1.75	.88	.19	1.50	1.56	1.16	3
CD650-12-3	600-1000	650	1/2"	1-1/8"	6.88	2.00	1.19	1.75	1.75	.25	1.88	2.34	1.68	3

*And combinations

**Uses slotted head screw set

◆ NEMA hole sizes and spacing

