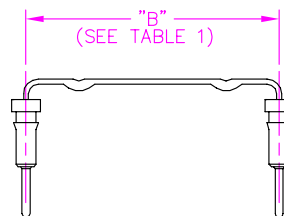
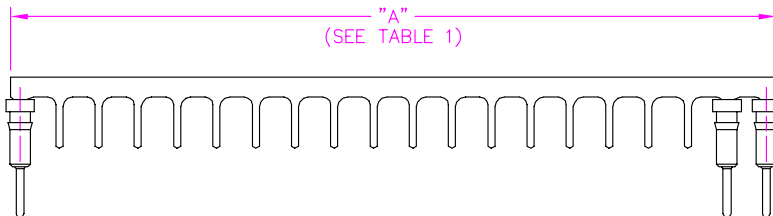
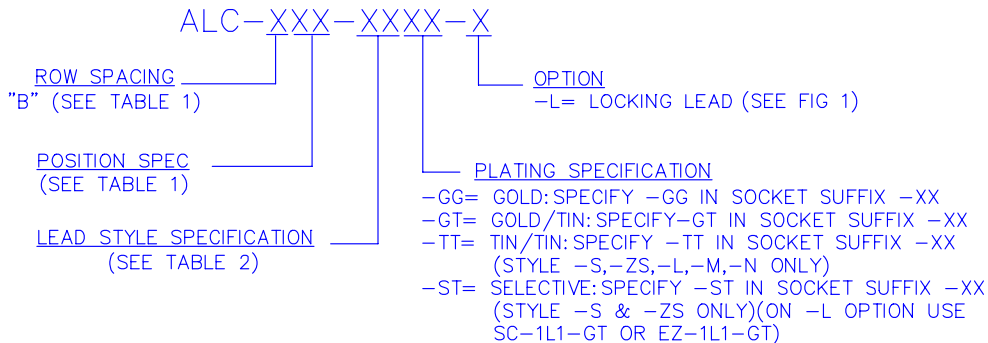


* CUT TO 'A' DIM.

SERIES	POS.	USE BODY	"A"	"B"
-3	14	ALC-324	.650 [16.51] (REF)	.300 [7.62]
	16	ALC-316	.750 [19.05] (REF)	.300 [7.62]
	18	ALC-320*	.850±.005 [21.59±.005]	.300 [7.62]
	20	ALC-320	.950 [12.70] (REF)	.300 [7.62]
	24	ALC-324	1.150 [29.21] (REF)	.300 [7.62]
-6	24	ALC-624	1.175±.010 [29.85±.25]	.600 [15.24]
	28	ALC-640	1.375 [34.93] (REF)	.600 [15.24]
	32	ALC-632	1.575±.010 [40.02±.25]	.600 [15.24]
	40	ALC-640	1.975 [50.17] (REF)	.600 [15.24]

DIMENSIONS ARE IN INCHES		UNLESS OTHERWISE NOTED	TOLERANCES ARE:	TITLE: ALUMINUM DIP CARRIER	DWG NO: ALC-XXX-XXXX-X
ONE PLACE DECIMALS: ±	THREE PLACE DECIMALS: ±	ANGLES ±			SHEET 1 OF 1
TWO PLACE DECIMALS: ±	FOUR PLACE DECIMALS: ±				

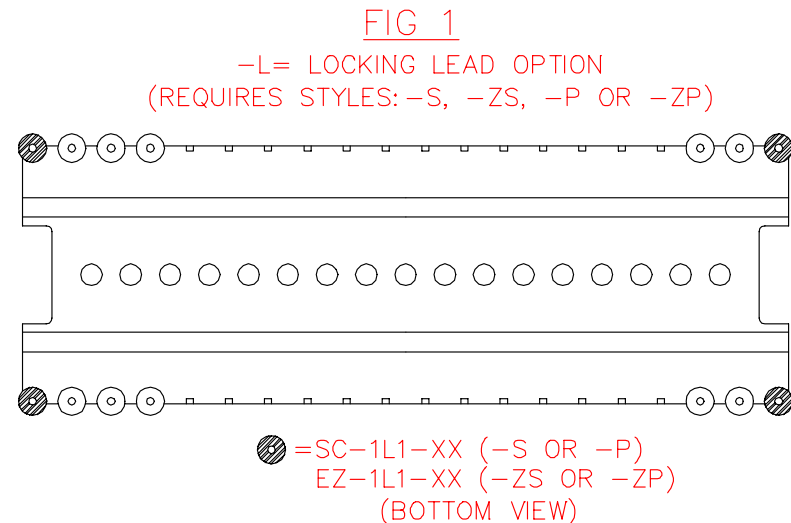


NOTES:
1.) PULL-OFF FORCE: 3 OZ. MIN.

LEAD STYLE	USE SOCKET
-B	SC-1S1-XX
-ZB	EZ-1S1-XX
-L	SC-3P1-XX
-ZL	EZ-3P1-XX
-M	SC-4P1-XX
-ZM	EZ-4P1-XX
-N	SC-5P1-XX
-ZN	EZ-5P1-XX
-P	SC-1M1-XX
-ZP	EZ-1M1-XX
-S	SC-1P1-XX
-ZS	EZ-1P1-XX
-D	SP-101-XX
-ZD	EP-101-XX

Do not scale from this print

PROPRIETARY NOTE
THIS DOCUMENT CONTAINS INFORMATION CONFIDENTIAL AND PROPRIETARY TO SAMTEC INC. AND SHALL NOT BE REPRODUCED OR TRANSFERRED TO OTHER DOCUMENTS OR DISCLOSED TO OTHERS OR USED FOR ANY PURPOSE OTHER THAN THAT FOR WHICH IT WAS OBTAINED WITHOUT THE EXPRESSED WRITTEN CONSENT OF SAMTEC INC.



MISC\MKTG
ALC-MKT

samtec

520 PARK EAST BLVD. NEW ALBANY, INDIANA 47150
PHONE (812) 944-6733 P.O. BOX 1147
CODE 55322

MADE BY: PURVIS 9-18-86	ENGINEER APPROVAL: TOM 9/24
CHECKED BY: WILLIAMS 9-24-86	

ALC-XXX-XXXX-X
SHEET 1 OF 1