

SPECIFICATIONS

Mechanical

Mating Force: 4.5Pounds max.(RJ45) 7.88Pounds max.(USB)
Unmating Force: 4.5Pounds max.(RJ45) 2.25Pounds min.(USB)
Durability: 1000 Cycles(RJ45) 1500 Cycles(USB)

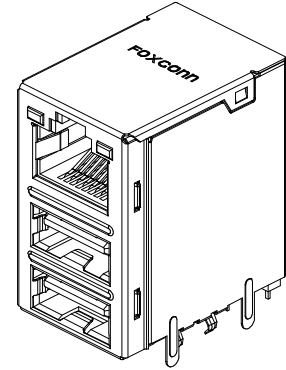
Electrical

Current Rating: 0.5A max.(RJ45) 1.0A(USB)
Dielectric Withstanding Voltage: 1000V(RJ45) 500V(USB)

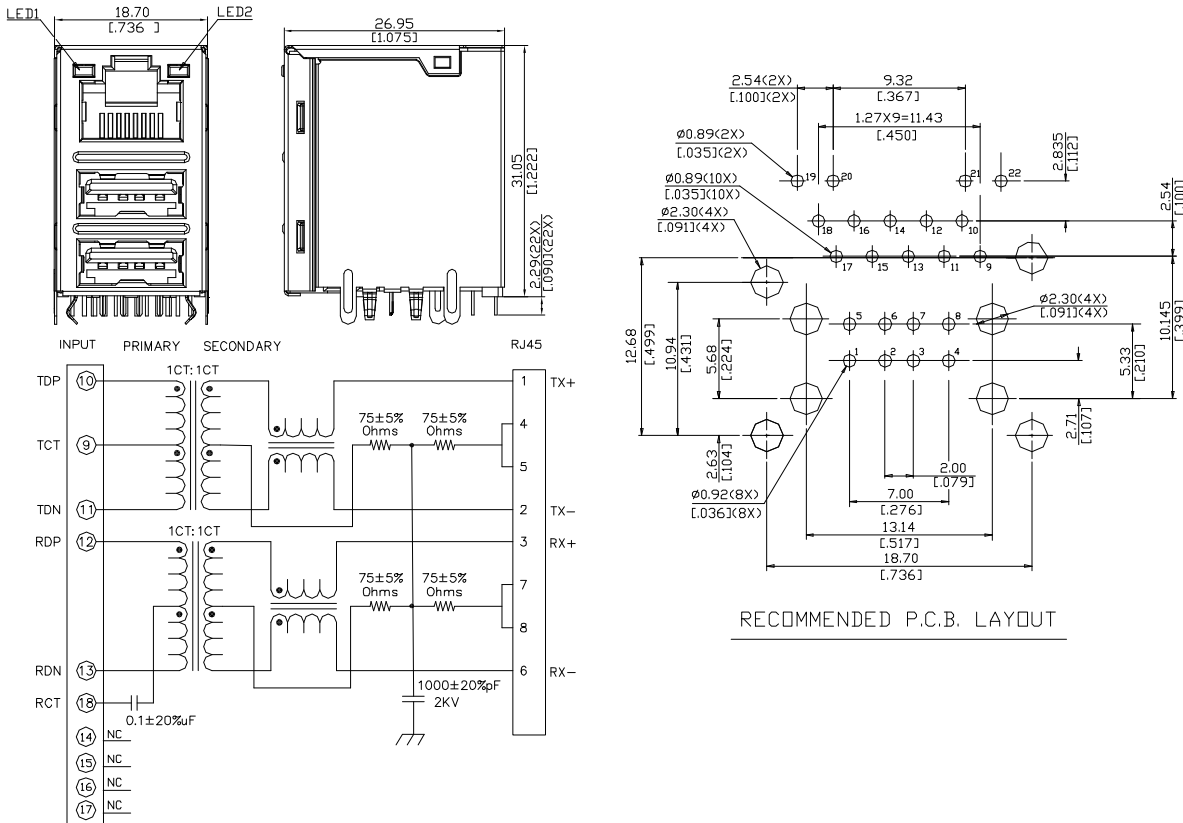
Physical

Housing: Thermoplastic, UL 94V-0 rated in Black Color
Contact: Copper Alloy
Shell: Copper Alloy
Operating Temperature: 0°C to +70°C

JFM Series
RJ45 Over Dual USB
R/A, T/H Type
1.27mm [.050"] Pitch
10/100 Base-T



DRAWING



ORDERING INFORMATION

PRODUCT NO.: JFM 2 4 U 1 * - 21U6 - 4 F

RJ With Magnetic

Protocol Type:
2=10/100 Base T

Core Count:
4=4Core

Configuration:
U=Combo USB

PCB Attach Method:
1= Solder Tail

Material Of Plating:
F=Lead Free

Packaging:
4=Soft Tray

Extension Code

LEDs
(See Sheet)

JFM24U1K-21U6-4F	19 ORANGE	20	21 GREEN	22 ORANGE
JFM24U1J-21U6-4F	19 GREEN	20 BLACK	21 YELLOW	22 GREEN
JFM24U1H-21U6-4F	19 ORANGE	20	21 GREEN	22 ORANGE
JFM24U1G-21U6-4F	19 YELLOW	20	21 GREEN	22 ORANGE
JFM24U1F-21U6-4F	19 GREEN	20	21 ORANGE	22 GREEN
JFM24U1B-21U6-4F	19 GREEN	20 BLACK	21 ORANGE	22 YELLOW
JFM24U1A-21U6-4F	19 GREEN	20	21 GREEN	22 YELLOW
JFM24U14-21U6-4F	19 YELLOW	20	21 YELLOW	22 ORANGE
JFM24U13-21U6-4F	19 GREEN	20	21 YELLOW	22 ORANGE
JFM24U12-21U6-4F	19 GREEN	20	21 GREEN	22 ORANGE
JFM24U11-21U6-4F	19 YELLOW	20	21 GREEN	22 ORANGE
JFM24U10-21U6-4F	NONE		NONE	
PART NO.	LED1		LED2	