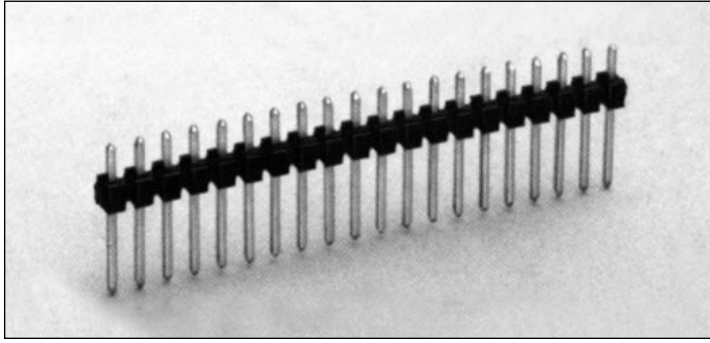


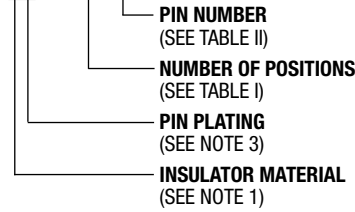
.100" (2.54mm) Single Row, Through Hole, Vertical Header



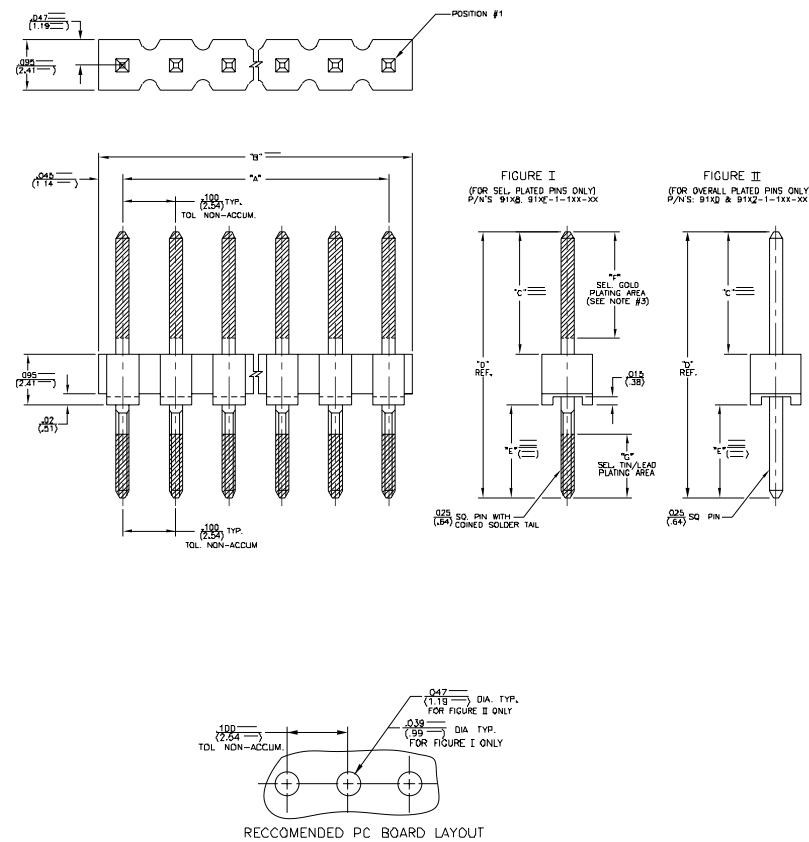
9100 SERIES ("POST/BOXE")

PART NUMBER LEGEND

91XX-1-1XX-XX



MATING CONNECTORS: 9000 SERIES



NOTES:

- INSULATOR MATERIAL:
910X-1-1XX-XX - POLYESTER (PET), 30% GLASS REINFORCED, UL 94V-0, COLOR BLACK
911X-1-1XX-XX - POLYESTER (PCT), 30% GLASS REINFORCED, UL 94V-0, COLOR BLACK
912X-1-1XX-XX - POLYESTER (PCT), 30% GLASS REINFORCED, UL 94V-0, COLOR BRONZE
- PIN MATERIAL: PHOSPHOR BRONZE
- PIN FINISH: 911X-1-1XX-XX - .000150/.0003 BRUTE TIN OVER .000050/.000100 NICKEL PLATE
912X-1-1XX-XX - .000015 MIN. GOLD OVER .000050/.000150 NICKEL PLATE
913X-1-1XX-XX - .000030 SELECTIVE GOLD PLATE IN CONTACT AREA OVER .000050/.000150 NICKEL PLATE ALL OVER .00017/.0002 SEL. 90/10 TIN/LEAD ON SOLDER TAIL AS PER DRWG.
914X-1-1XX-XX - .000015 SELECTIVE GOLD PLATE IN CONTACT AREA OVER .000050/.000150 NICKEL PLATE ALL OVER .00017/.0002 SEL. 90/10 TIN/LEAD ON SOLDER TAIL AS PER DRWG.
- ALL DIMS ARE IN IN./MM.
- PIN RETENTION: 2 LB. MINIMUM

| PART NUMBER | NO. OF POSITIONS | DIM. "A" | DIM. "B" |
|---------------|------------------|---------------|----------------|
| 91XX-1-102-XX | 2 | .100/(2.54) | .190/(4.83) |
| -103- | 3 | .200/(5.08) | .290/(7.37) |
| -104- | 4 | .300/(7.62) | .390/(9.91) |
| -105- | 5 | .400/(10.16) | .490/(12.45) |
| -106- | 6 | .500/(12.70) | .590/(14.99) |
| -107- | 7 | .600/(15.24) | .690/(17.53) |
| -108- | 8 | .700/(17.78) | .790/(20.07) |
| -109- | 9 | .800/(20.32) | .890/(22.61) |
| -110- | 10 | .900/(22.86) | .990/(25.15) |
| -111- | 11 | 1.000/(25.40) | 1.090/(27.69) |
| -112- | 12 | 1.100/(27.94) | 1.190/(30.23) |
| -113- | 13 | 1.200/(30.48) | 1.290/(32.77) |
| -114- | 14 | 1.300/(33.02) | 1.390/(35.31) |
| -115- | 15 | 1.400/(35.56) | 1.490/(37.85) |
| -116- | 16 | 1.500/(38.10) | 1.590/(40.39) |
| -117- | 17 | 1.600/(40.64) | 1.690/(42.93) |
| -118- | 18 | 1.700/(43.18) | 1.790/(45.47) |
| -119- | 19 | 1.800/(45.72) | 1.890/(48.01) |
| -120- | 20 | 1.900/(48.26) | 1.990/(50.55) |
| -121- | 21 | 2.000/(50.80) | 2.090/(53.09) |
| -122- | 22 | 2.100/(53.34) | 2.190/(55.63) |
| -123- | 23 | 2.200/(55.88) | 2.290/(58.17) |
| -124- | 24 | 2.300/(58.42) | 2.390/(60.71) |
| -125- | 25 | 2.400/(60.96) | 2.490/(63.25) |
| -126- | 26 | 2.500/(63.50) | 2.590/(65.79) |
| -127- | 27 | 2.600/(66.04) | 2.690/(68.33) |
| -128- | 28 | 2.700/(68.58) | 2.790/(70.87) |
| -129- | 29 | 2.800/(71.12) | 2.890/(73.41) |
| -130- | 30 | 2.900/(73.66) | 2.990/(75.95) |
| -131- | 31 | 3.000/(76.20) | 3.090/(78.49) |
| -132- | 32 | 3.100/(78.74) | 3.190/(81.03) |
| -133- | 33 | 3.200/(81.28) | 3.290/(83.57) |
| -134- | 34 | 3.300/(83.82) | 3.390/(86.11) |
| -135- | 35 | 3.400/(86.36) | 3.490/(88.65) |
| -136- | 36 | 3.500/(88.90) | 3.590/(91.19) |
| -137- | 37 | 3.600/(91.44) | 3.690/(93.73) |
| -138- | 38 | 3.700/(93.98) | 3.790/(96.27) |
| -139- | 39 | 3.800/(96.52) | 3.890/(98.81) |
| 91XX-1-140-XX | 40 | 3.900/(99.06) | 3.990/(101.35) |

| PART NUMBER | DIM "C" | DIM "D" | DIM "E" | DIM "F" | DIM "G" |
|---------------|-----------------|------------------|----------------|----------------|----------------|
| 91XX-1-1XX-01 | .230 (5.84) | .500 (12.70) | .175 (4.43) | .200 (5.08) | .190 (4.83) |
| -02 | .230 (5.84) | .450 (11.43) | .175 (4.43) | .160 (4.19) | .170 (4.30) |
| -03 | .300 (7.62) | .500 (12.70) | .175 (4.43) | .200 (5.08) | .190 (4.83) |
| -04 | .320 (8.13) | .525 (13.34) | .175 (4.43) | .200 (5.08) | .190 (4.83) |
| -05 | .450 (11.43) | .550 (13.97) | .175 (4.43) | .200 (5.08) | .190 (4.83) |
| -06 | .450 (11.43) | .600 (15.24) | .175 (4.43) | .200 (5.08) | .190 (4.83) |
| -07 | .450 (11.43) | .650 (16.51) | .175 (4.43) | .200 (5.08) | .190 (4.83) |
| -08 | .450 (11.43) | .700 (17.78) | .175 (4.43) | .200 (5.08) | .190 (4.83) |
| -09 | .450 (11.43) | .750 (19.05) | .175 (4.43) | .200 (5.08) | .190 (4.83) |
| -10 | .450 (11.43) | .800 (20.32) | .175 (4.43) | .200 (5.08) | .190 (4.83) |
| -11 | .450 (11.43) | .850 (21.59) | .175 (4.43) | .200 (5.08) | .190 (4.83) |
| -12 | .450 (11.43) | .900 (22.86) | .175 (4.43) | .200 (5.08) | .190 (4.83) |
| -13 | .450 (11.43) | .950 (24.13) | .175 (4.43) | .200 (5.08) | .190 (4.83) |
| -14 | .450 (11.43) | 1.000 (25.40) | .175 (4.43) | .200 (5.08) | .190 (4.83) |
| -15 | .450 (11.43) | 1.050 (26.67) | .175 (4.43) | .200 (5.08) | .190 (4.83) |
| -16 | .450 (11.43) | 1.100 (27.94) | .175 (4.43) | .200 (5.08) | .190 (4.83) |
| -17 | .450 (11.43) | 1.150 (29.21) | .175 (4.43) | .200 (5.08) | .190 (4.83) |
| -18 | .450 (11.43) | 1.200 (30.48) | .175 (4.43) | .200 (5.08) | .190 (4.83) |
| -19 | .450 (11.43) | 1.250 (31.75) | .175 (4.43) | .200 (5.08) | .190 (4.83) |
| -20 | .450 (11.43) | 1.300 (33.02) | .175 (4.43) | .200 (5.08) | .190 (4.83) |
| -21 | .450 (11.43) | 1.350 (34.29) | .175 (4.43) | .200 (5.08) | .190 (4.83) |
| -22 | .450 (11.43) | 1.400 (35.56) | .175 (4.43) | .200 (5.08) | .190 (4.83) |
| -23 | .450 (11.43) | 1.450 (36.83) | .175 (4.43) | .200 (5.08) | .190 (4.83) |
| -24 | .450 (11.43) | 1.500 (38.10) | .175 (4.43) | .200 (5.08) | .190 (4.83) |
| -25 | .450 (11.43) | 1.550 (39.37) | .175 (4.43) | .200 (5.08) | .190 (4.83) |
| -26 | .450 (11.43) | 1.600 (40.64) | .175 (4.43) | .200 (5.08) | .190 (4.83) |
| -27 | .450 (11.43) | 1.650 (41.91) | .175 (4.43) | .200 (5.08) | .190 (4.83) |
| -28 | .450 (11.43) | 1.700 (43.18) | .175 (4.43) | .200 (5.08) | .190 (4.83) |
| -29 | .450 (11.43) | 1.750 (44.45) | .175 (4.43) | .200 (5.08) | .190 (4.83) |
| -30 | .450 (11.43) | 1.800 (45.72) | .175 (4.43) | .200 (5.08) | .190 (4.83) |
| -31 | .450 (11.43) | 1.850 (46.99) | .175 (4.43) | .200 (5.08) | .190 (4.83) |
| -32 | .450 (11.43) | 1.900 (48.26) | .175 (4.43) | .200 (5.08) | .190 (4.83) |
| -33 | .450 (11.43) | 1.950 (49.53) | .175 (4.43) | .200 (5.08) | .190 (4.83) |
| -34 | .450 (11.43) | 2.000 (50.80) | .175 (4.43) | .200 (5.08) | .190 (4.83) |
| -35 | .450 (11.43) | 2.050 (52.07) | .175 (4.43) | .200 (5.08) | .190 (4.83) |
| 91XX-1-1XX-36 | .450 (11.43) | 2.100 (53.34) | .175 (4.43) | .200 (5.08) | .190 (4.83) |



North and South America:
Methode Electronics, Inc. Connector Products
 1700 Hicks Road • Rolling Meadows, IL 60008 USA
 847-392-3500 • Toll Free: 800-323-6864 • Fax: 847-392-9404
 Email: info@methode.com • Web: www.methode.com/connector/index.html

Europe:
Methode Electronics Ireland, Ltd.
 Unit H, Crossagalla Business Park, Ballysimon Rd. • Limerick, Ireland
 +353 (0) 61 401222 • Fax: +353 (0) 61 401942
 Email: info@methode.ie • Web: ireland.methode.com/main.html

Far East:
Methode Electronics Far East, Pte. Ltd.
 1 Tuas Lane, Jurong Town • Singapore 638610
 65-68615444 • Fax: 65-68614777
 Email: sales@methode.com.sg • Web: www.methode.com/mefe/index.html