

SPECIFICATIONS

Mechanical

Connector Mating Force : 3.6 Kgf Max.
Connector Unmating Force : 0.6 kgf Min.
Durability : 5,000 Cycles

Electrical

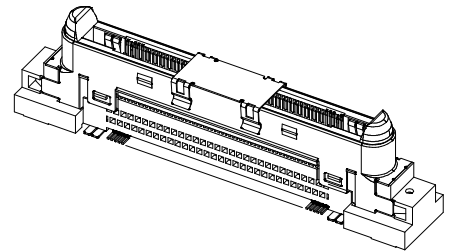
Voltage Rating: 125V
Current Rating: 0.3A
Contact Resistance: Initial 80mΩ max., ΔR 20mΩ max.
Dielectric Withstanding Voltage: 250V AC/1 min.
Insulation Resistance: 100MΩ

Physical

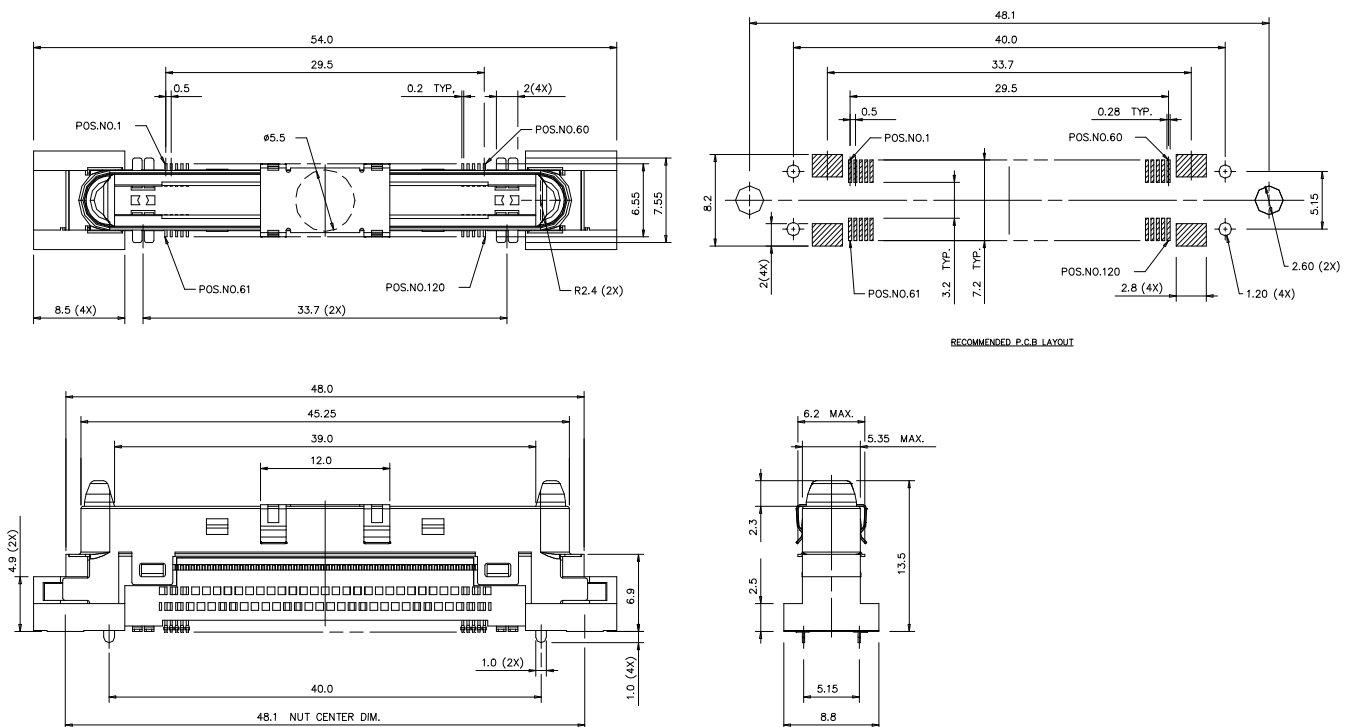
Housing: Thermoplastic, UL 94V-0 rated in Natural Color
Contact: Copper alloy
Plating: See "ORDERING INFORMATION"
Metal Spring & Solder Pad: Copper alloy
Operating Temperature: -55°C to +85°C

Docking Connector

QL Series
Vertical, Plug
Reverse Type 0.5mm Pitch
120Pos.



DRAWING



ORDERING INFORMATION

PRODUCT NO.:	QL00603-D603-6F	
QL=DOCKING CONN.		Leed Free Code F=Leed Free
Terminal Type 0=Vertical Type		Package Code 6=Soft Tray Cap
Contact style 1=Plug Conn		Extension Code
Positions 60=60Pos/Row		Row 6=Parallel Two Rows
Contact Plating 3=30u" Au		Pitch D=0.5mm