

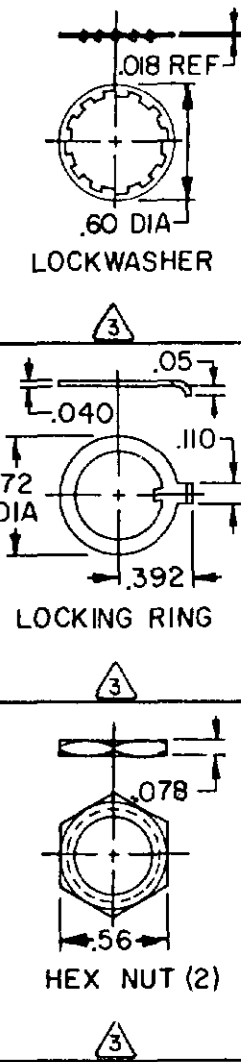
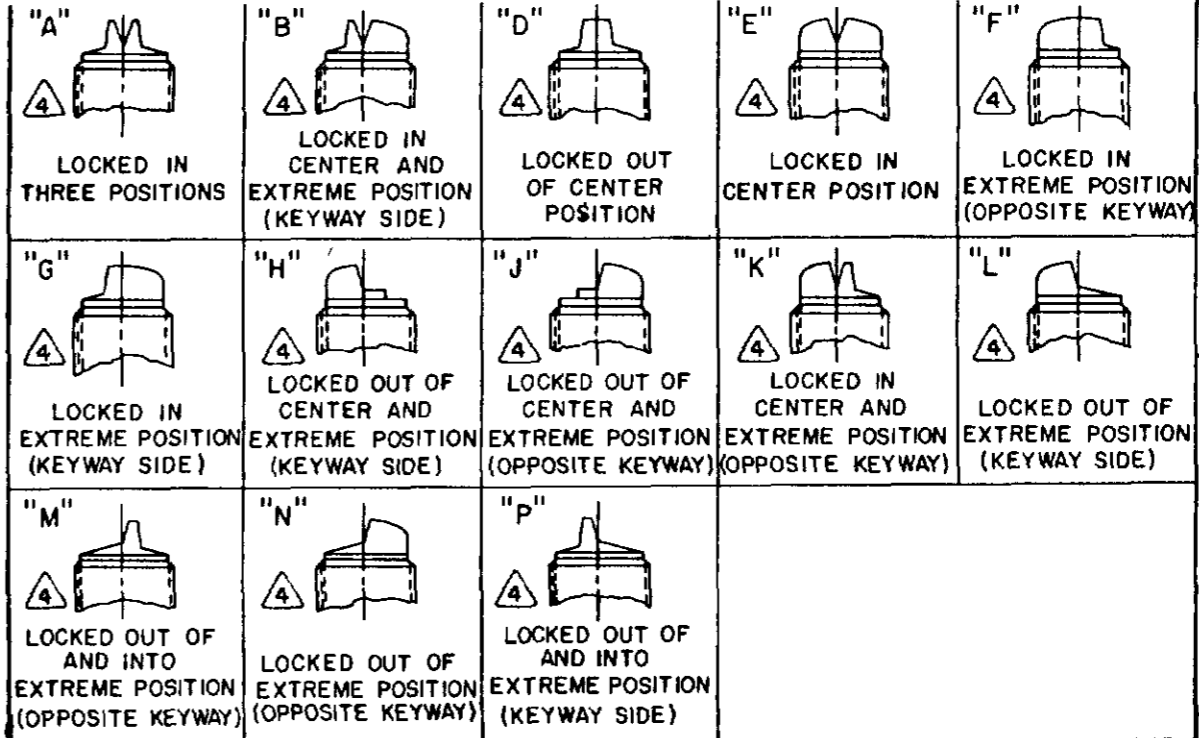
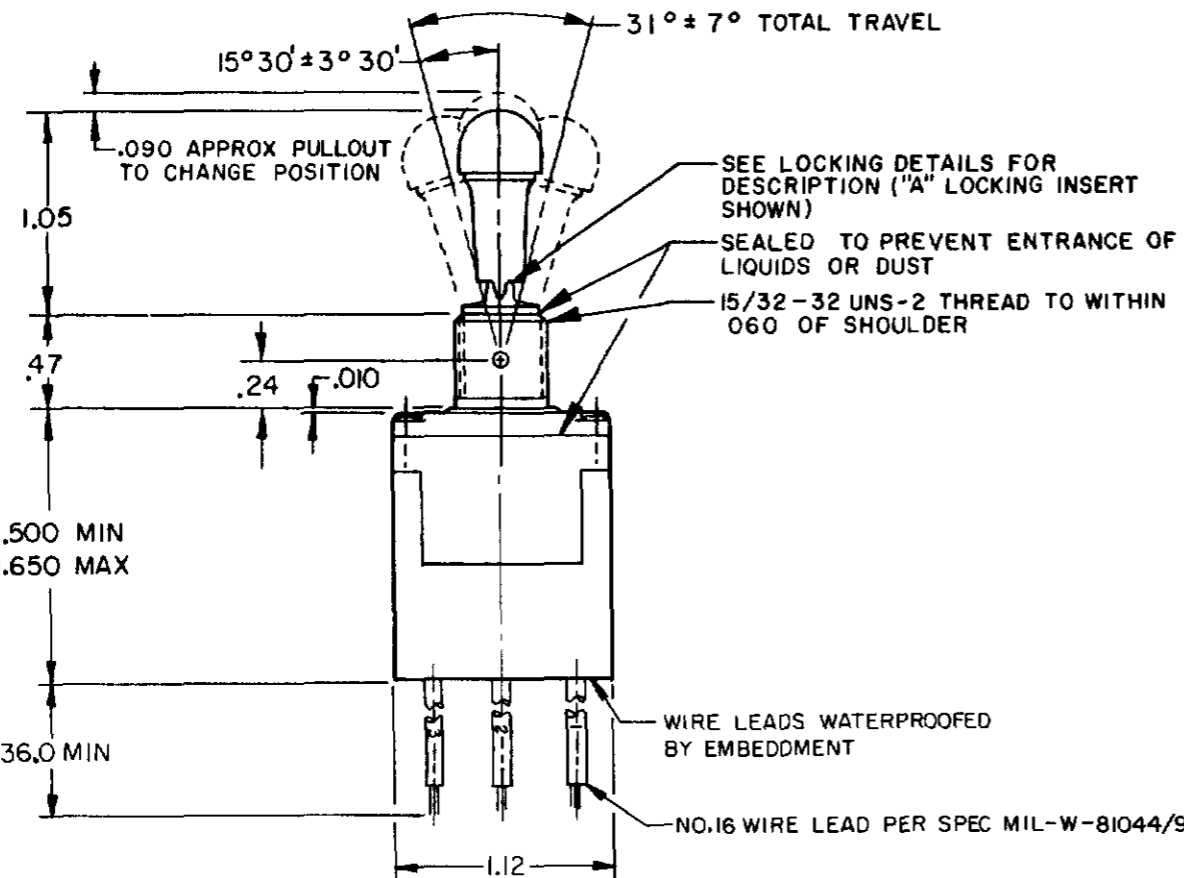
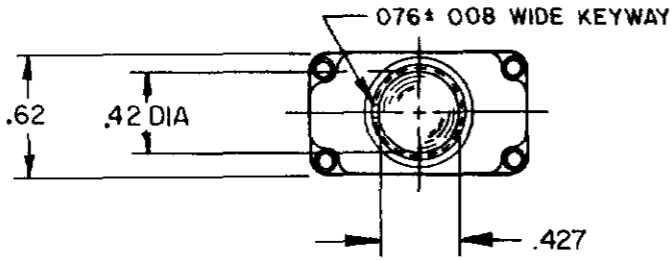
MICRO SWITCH
 FREEPORT ILLINOIS U S A
 A DIVISION OF HONEYWELL
 FED. MFG CODE 91929

SWITCH-TOGGLE

CATALOG LISTING
1TL343 SERIES
CHART 2

| CATALOG LISTING | AVAILABLE LOCKING COMBINATIONS FOR CONFIGURATION SEE LETTERED DETAILS | CIRCUIT MADE WITH TOGGLE LEVER IN | | | CURRENT CAPACITY (AMPS) | | | | | | | | | | | | | | |
|-----------------|-----------------------------------------------------------------------|-----------------------------------|--------------|-----------------------|-------------------------|----------|-----------|----------------|----------------|----------|-----------|----------------|----|-------------------------------|--|--|--|--|--|
| | | KEYWAY SIDE (1-2) | CENTER (1-2) | OPPOSITE KEYWAY (2-3) | RESISTIVE LOAD | | | | INDUCTIVE LOAD | | | | | | | | | | |
| | | | | | DC VOLTS | AC VOLTS | LAMP LOAD | INDUCTIVE LOAD | DC VOLTS | AC VOLTS | LAMP LOAD | INDUCTIVE LOAD | | | | | | | |
| ITL 343 -1 | ABDEFGHJKLMNP | ON | OFF | ON | | | | | | | | | | | | | | | |
| ITL 343 -2 | D F,G | OFF | NONE | ON | | | | | | | | | | | | | | | |
| ITL 343 -3 | D,F,G | ON | NONE | ON | 20 | 75 | 5 | 15 | 6 | 5 | 3 | 15 | 10 | (REFER TO L191 FOR UL RATING) | | | | | |
| ITL 343 -2I | E,F,K,M | NONE | OFF | ON | | | | | | | | | | | | | | | |
| ITL 343 -3I | E,F,K,M | NONE | ON | ON | | | | | | | | | | | | | | | |
| ITL 343 -4 | F | MOM OFF | NONE | ON | | | | | | | | | | | | | | | |
| ITL 343 -5 | E,F,K,L,M,N | MOM ON | OFF | ON | | | | | | | | | | | | | | | |
| ITL 343 -6 | F | MOM ON | NONE | OFF | | | | | | | | | | | | | | | |
| ITL 343 -7 | E,L,N | MOM ON | OFF | MOM ON | 15 | 75 | .5 | 15 | 6 | 4 | 2 | 10 | 7 | (REFER TO L192 FOR UL RATING) | | | | | |
| ITL 343 -8 | F | MOM ON | NONE | ON | | | | | | | | | | | | | | | |
| ITL 343 -5I | E | NONE | ON | MOM ON | | | | | | | | | | | | | | | |
| ITL 343 -6I | E | MOM ON | OFF | NONE | | | | | | | | | | | | | | | |

THIS DRAWING COVERS A PROPRIETARY ITEM AND IS THE PROPERTY OF MICRO SWITCH. A DIVISION OF HONEYWELL. THIS DRAWING IS NOT TO BE COPIED OR USED WITHOUT THE APPROVAL OF MICRO SWITCH.



- NOTES
- SWITCHES ARE CAPABLE OF WITHSTANDING A TEMPERATURE OF 160°F CONTINUOUSLY AT FULL RATED LOAD
 - CIRCUIT DESIGNATION AND MICRO SWITCH CATALOG LISTING MARKED ON SIDE OF SWITCH
 - FURNISHED UNASSEMBLED
 - KEYWAY SHOWN ON LEFT SIDE
 - SUFFIX LETTER MUST BE ADDED FOR DESIRED TYPE OF TOGGLE LOCKING. SEE CHART FOR AVAILABLE LOCKING COMBINATIONS
 - APPLIES ONLY TO "ON" AND "MOMENTARY ON" POSITIONS
 - LEADWIRES ARE MARKED WITH BLACK INK EACH 3.0 MAX: "1", "2", "3"

CATALOG LISTING
1TL343 SERIES CHART 2
 PAGE 1 OF 1

ISSUE **M**
 8

REVISIONS

| | | | |
|---|---------|-------|-----------|
| A | C077942 | J A F | 28 JUN 94 |
| B | 89430 | J J A | 10 NOV 99 |

FORMTEK
 DRAWN
 JAF 28 JUN 94
 CHECK

THIRD ANGLE PROJECTION

SCALE FULL

DO NOT SCALE PRINT

TOLERANCES

| DIM | TOL | DIM | TOL |
|--------------|-------|----------|----------|
| NO PLACES | XX | 17 04 | 0 81/03 |
| ONE PLACE | XX | 0 41/018 | 0 36/016 |
| TWO PLACES | XX XX | 0 16/006 | 0 13/006 |
| THREE PLACES | XXX | | |

DESIGN UNITS SI METRIC US CUSTOMARY

RAW MATERIAL-COMMERCIAL STANDARD MICRO SWITCH STANDARDS APPLY

DIMENSIONS ARE TO BE MET BEFORE PROTECTIVE COATINGS ARE APPLIED

WEIGHT .10LBS APPROX

| | | |
|------|---------------------------------------------------------------------------------|----|
| L191 | 15A 125, 250, 277 VAC 1/2HP 125 VAC 1HP 250, 277 VAC 5A 125 VAC "L" | CE |
| L192 | 10A 125, 250, 277 VAC 1/4HP 125 VAC, 1/2HP 250, 277 VAC 3A 125 VAC "L" | CE |