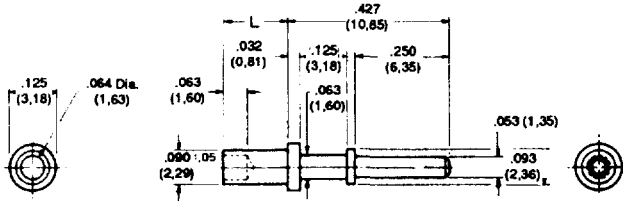


# SOLDER TERMINALS - PIN

**120-1012**

.094 (2,37) Mounting Hole Diameter (# 42 Drill)



HOW TO ORDER CODE:

**120 - 1012- XX - 01 - 00**

Basic Part No.      Finish

BASIC PART No.	L	FOR BOARD THICKNESS	
120-1012	-01	.078 (1,98)	.031 (0,79)
	-02	.109 (2,77)	.062 (1,58)
	-03	.141 (3,58)	.094 (2,38)
	-04	.172 (4,37)	.125 (3,18)

ACTUAL SIZE



FINISH CODED DASH No.  
-01 | Silver

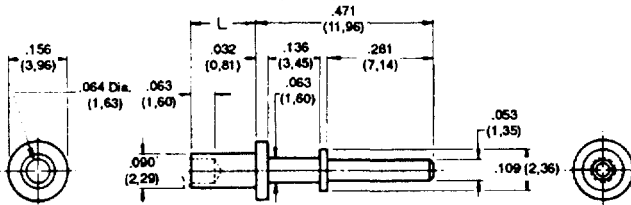
COMPONENT	MATERIAL	FINISH
Terminal	Brass	Silver

RECOMMENDED SWAGING TOOLS - ANVIL      435 - 6404 - 01 - 00 - 00  
 ROLL PUNCH      435 - 6604 - 01 - 00 - 00  
 FLARE PUNCH      435 - 6663 - 01 - 00 - 00

Mechanical Tolerance Unless Otherwise Stated ± .005 (0,13)

**120-1014**

.094 (2,37) Mounting Hole Diameter (# 42 Drill)



HOW TO ORDER CODE:

**120 - 1014 - XX - 01 - 00**

Basic Part No.      Finish

BASIC PART No.	L	FOR BOARD THICKNESS	
120-1014	-01	.078 (1,98)	.031 (0,79)
	-02	.109 (2,77)	.062 (1,58)
	-03	.141 (3,58)	.094 (2,38)
	-04	.172 (4,37)	.125 (3,18)

ACTUAL SIZE



FINISH CODED DASH No.  
-01 | Silver

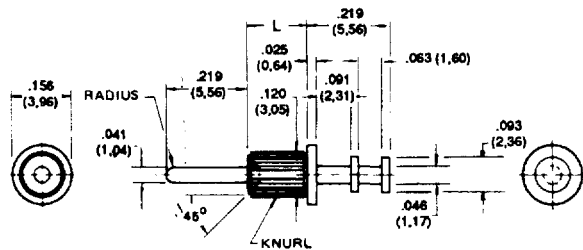
COMPONENT	MATERIAL	FINISH
Terminal	Brass	Silver

RECOMMENDED SWAGING TOOLS - ANVIL      435 - 6447 - 01 - 00 - 00  
 ROLL PUNCH      435 - 6604 - 01 - 00 - 00  
 FLARE PUNCH      435 - 6663 - 01 - 00 - 00

Mechanical Tolerance Unless Otherwise Stated ± .005 (0,13)

**120-2081**

Knurled -.125 (3,18) Mounting Hole Diameter (1/8 Drill)



HOW TO ORDER CODE:

**120 - 2081 - XX - 01 - 00**

Basic Part No.      Finish

BASIC PART No.	L	FOR BOARD THICKNESS	
120-2081	-01	.063 (1,60)	.031 (0,79)
	-02	.093 (2,36)	.062 (1,58)
	-03	.125 (3,18)	.094 (2,38)
	-04	.156 (3,96)	.125 (3,18)

ACTUAL SIZE



FINISH CODED DASH No.  
-01 | Silver

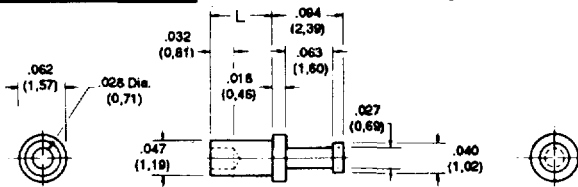
COMPONENT	MATERIAL	FINISH
Terminal	Brass	Silver

RECOMMENDED SWAGING TOOLS - ANVIL      435 - 6422 - 01 - 00 - 00  
 ROLL PUNCH      435 - 6622 - 01 - 00 - 00

Mechanical Tolerance Unless Otherwise Stated ± .005 (0,13)

**160-2085**

.052 (1,32) Mounting Hole Diameter (# 55 Drill)



HOW TO ORDER CODE:

**160 - 2085 - XX - XX - 00**

Basic Part No.      Finish

BASIC PART No.	L	FOR BOARD THICKNESS	
160-2085	-11	.035 (0,89)	.016 (0,40)
	-01	.051 (1,30)	.031 (0,79)
	-02	.082 (2,08)	.062 (1,58)
	-03	.113 (2,87)	.125 (3,18)
	-04	.145 (3,68)	.125 (3,18)

ACTUAL SIZE



FINISH CODED DASH No.  
-01 | Silver  
-03 | Gold

COMPONENT	MATERIAL	FINISH
Terminal	Brass	Silver Hard Gold over Nickel

RECOMMENDED SWAGING TOOLS - ANVIL      435 - 6429 - 01 - 00 - 00  
 ROLL PUNCH      435 - 6629 - 01 - 00 - 00  
 FLARE PUNCH      435 - 6657 - 01 - 00 - 00

Mechanical Tolerance Unless Otherwise Stated ± .005 (0,13)