



TITLE

INDUCTOR - POTS SPLITTER

PN

39679

REV

A

AGENCY APPROVAL: NA

SH

2

OF

7

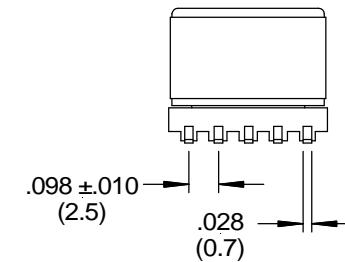
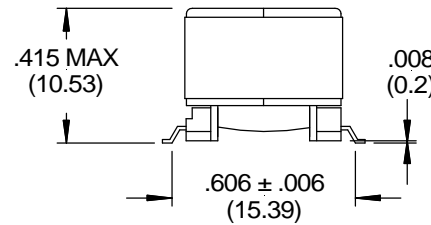
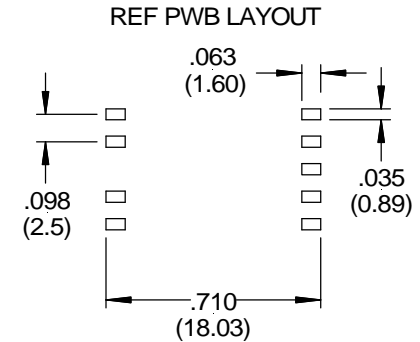
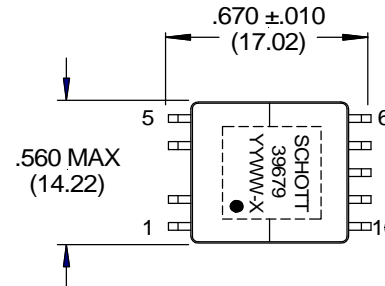
SPECIFICATIONS:

Operating Temperature Range: -40°C to +85°C

Temp Class 130°C

Electrical Characteristics (@ 25°C unless otherwise noted)

1. INDUCTANCE: @ 0.1 Vrms, 10 KHz, 0-100 mAdc
 - @ 0 mAdc 1-5 = 6.72 to 7.28 mH (7.0 ±4%)
 - @ 100 mAdc, 1-10 tie (5&6) = 22 mH MIN
 - @ 80 mAdc, 1-10 tie (5&6) = 22 mH MIN over operating Temp range
 - @ 0 mAdc L 1-5 and L 6-10 match within 1.25% of each other.
2. IWC: @ 100 KHz, 0.1 Vrms
 - 1-6 = 150 pF MAX
3. TURNS RATIO: 1-5 : 6-10 = 1 : 1 ± 2%
4. DC RESISTANCE: OHMS
 - 1-5 = 6-10 = 6.5 MAX
5. DIELECTRIC STRENGTH: 850 Vdc, 1 minute
 - (1000 Vdc, 1 second Schott Production Test)
 - 1-6 AND ALL WINDINGS TO CORE
6. LEAKAGE INDUCTANCE: @ 100kHz, 0.1Vrms
 - 1-5 (TIE 6-10) = 45 µH MAX



NOTE:
COPLANARITY ≤ .004 (0.10)

