

**PRELIMINARY DATA SHEET**

# SKY14155: WCDMA DP4T Switch With Decoder

## Applications

- WCDMA
- Broadband, high power switches

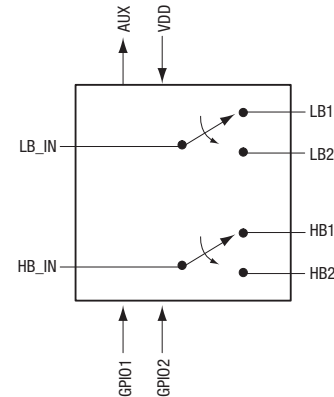
## Features

- Broadband frequency range: 0.1-2.5 GHz
- Low insertion loss: 0.3 dB @ 1 GHz and 0.4 dB @ 2 GHz
- High isolation: >30 dB @ 1 GHz and 2 GHz
- Operating voltage range: 2.5 to 4.5 V
- Good 2<sup>nd</sup> and 3<sup>rd</sup> harmonic performance: <-50 dBm @ P<sub>IN</sub> = +28 dBm
- Auxiliary control to easily expand operational bands
- Small, QFN (12-pin, 2 x 2 mm) package (MSL1, 260 °C per JEDEC J-STD-020)

**NEW**



Skyworks Green™ products are RoHS (Restriction of Hazardous Substances)-compliant, conform to the EIA/EICTA/JEITA Joint Industry Guide (JIG) Level A guidelines, are halogen free according to IEC-61249-2-21, and contain <1,000 ppm antimony trioxide in polymeric materials.



**Figure 1. SKY14155 Block Diagram**

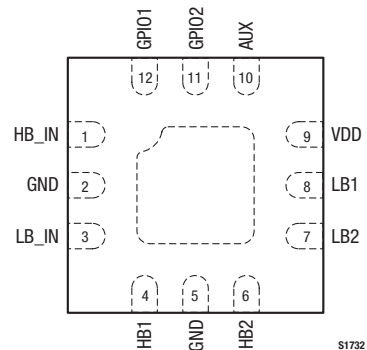
## Description

The SKY14155 is a double-pole, four-throw (DP4T) switch designed for broadband, high-power switching applications that demand low harmonics and low insertion loss. The switch is optimized for 3G WCDMA applications.

The SKY14155 features integrated logic that uses only two control lines for switch operation. The low current consumption of the device makes it very suitable for battery-operated applications.

The switch is manufactured using a state of the art Silicon on Insulator (SOI) process, and is provided in a compact Quad Flat No-Lead (QFN) 2 x 2 mm package.

A functional block diagram is shown in Figure 1. The pin configuration and package are shown in Figure 2. Signal pin assignments and functional pin descriptions are provided in Table 1.



**Figure 2. SKY14155 Pinout – 12-Pin QFN (Top View)**

**Table 1. SKY14155 Signal Descriptions**

Pin #	Name	Description	Pin #	Name	Description
1	HB_IN	High band transmit. This pin connected to pin 4 or 6 depending on the control voltage applied to pins 11 and 12.	7	LB2	Low band RF output 2. This pin is either connected to or disconnected from pin 3 depending on the control voltage applied to pins 11 and 12.
2	GND	Ground	8	LB1	Low band RF output 1. This pin is either connected to or disconnected from pin 3 depending on the control voltage applied to pins 11 and 12.
3	LB_IN	Low band transmit. This pin connected to pin 7 or 8 depending on the control voltage applied to pins 11 and 12.	9	VDD	Supply voltage input.
4	HB1	High band RF output 1. This pin is either connected to or disconnected from pin 1 depending on the control voltage applied to pins 11 and 12.	10	AUX	Auxiliary control signal output. Logic level output by this pin depends on the control voltage applied to pins 11 and 12.
5	GND	Ground	11	GPIO2	Control signal 2. Logic level applied to this pin and to pin 12, controls the state of the switch.
6	HB2	High band RF output 2. This pin is either connected to or disconnected from pin 1 depending on the control voltage applied to pins 11 and 12.	12	GPIO1	Control signal 1. Logic level applied to this pin and to pin 11, controls the state of the switch.

**Table 2. SKY14155 Absolute Maximum Ratings**

Parameter	Symbol	Minimum	Typical	Maximum	Units
Supply voltage (no operation)	V <sub>DD</sub>			6	V
Supply voltage (short operation)	V <sub>DD</sub>			5.4	V
Input power	P <sub>IN</sub>			+36	dBm
Storage temperature	T <sub>STG</sub>	–50		+100	°C
Operating temperature	T <sub>OP</sub>	–30		+85	°C

**Note:** Exposure to maximum rating conditions for extended periods may reduce device reliability. There is no damage to device with only one parameter set at the limit and all other parameters set at or below their nominal value. Exceeding any of the limits listed here may result in permanent damage to the device.

**CAUTION:** Although this device is designed to be as robust as possible, Electrostatic Discharge (ESD) can damage this device. This device must be protected at all times from ESD. Static charges may easily produce potentials of several kilovolts on the human body or equipment, which can discharge without detection. Industry-standard ESD precautions should be used at all times.

## Electrical and Mechanical Specifications

The absolute maximum ratings of the SKY14155 are provided in Table 2. Electrical specifications are provided in Table 3.

The SKY14155 may be used in one of three modes: standby, active, and isolation. These modes are controlled by the General Purpose I/O (GPIO) pins 11 and 12 with V<sub>DD</sub> = high. When V<sub>DD</sub> is

high, the switch is active and its state is controlled as described in Table 4. When the switch is in isolation mode, all paths are in an isolation state (all ports are off). When the switch is in standby mode, all paths are not operating.

**Table 3. SKY14155 Electrical Specifications (Note 1)****(V<sub>DD</sub> = 2.5 V to 4.5 V, T<sub>OP</sub> = +25 °C, V<sub>HIGH</sub> > 1.8 V, All Unused RF Ports Terminated in a 50 Ω Load, Unless Otherwise Noted)**

Parameter	Symbol	Test Condition	Min	Typical	Max	Units
Insertion loss		f = 1.0 GHz		0.3	0.4	dB
		f = 2.0 GHz		0.4	0.5	dB
		f = 2.5 GHz		0.5	0.6	dB
Isolation		f = 1.0 GHz	30	32		dB
		f = 2.0 GHz	30	32		dB
Return loss		f = 2.5 GHz	15			dB
2 <sup>nd</sup> harmonic	2fo	f <sub>FUNDAMENTAL</sub> = 900 MHz, P <sub>IN</sub> = +28 dBm		-52	-43	dBm
		f <sub>FUNDAMENTAL</sub> = 1800 MHz, P <sub>IN</sub> = +28 dBm		-51	-43	dBm
3 <sup>rd</sup> harmonic	3fo	f <sub>FUNDAMENTAL</sub> = 900 MHz, P <sub>IN</sub> = +28 dBm		-61	-46	dBm
		f <sub>FUNDAMENTAL</sub> = 1800 MHz, P <sub>IN</sub> = +28 dBm		-51	-46	dBm
Input 0.1 dB compression point	P0.1dB	f = 900 MHz		+33		dBm
		f = 1800 MHz		+33		dBm
Switching speed				2.5	5	μs
Supply voltage	V <sub>DD</sub>		2.5		4.5	V
Control voltage		V <sub>HIGH</sub>	1.8	2.0	2.8	V
		V <sub>LOW</sub>		0	0.3	V
		Control current in active & isolation		27		μA
		Control current in standby @ V <sub>DD</sub> = 2.5 V		0.8	5	μA
		Control current in standby @ V <sub>DD</sub> = 4.5 V		4.7		μA
		Control current in standby @ V <sub>DD</sub> = 5.4 V		6.0		μA

**Note 1:** Performance is guaranteed only under the conditions listed in this Table.**Table 4. SKY14155 Truth Table**

State	GPI01	GPI02	AUX (Output Only)	RF Path
1	0	0	0	Standby
2	0	1	1	High band 2 and Low band 2
3	1	0	1	High band 1 and Low band 1
4	1	1	0	Isolation

**Note:** "1" = +1.8 to +2.8 V (for GPI01 and GPI02 pins), or +2.0 V (for AUX pin). "0" = 0 V to +0.2 V. Any state other than described in this Table places the switch into an undefined state. An undefined state will not damage the device.

## Package Dimensions

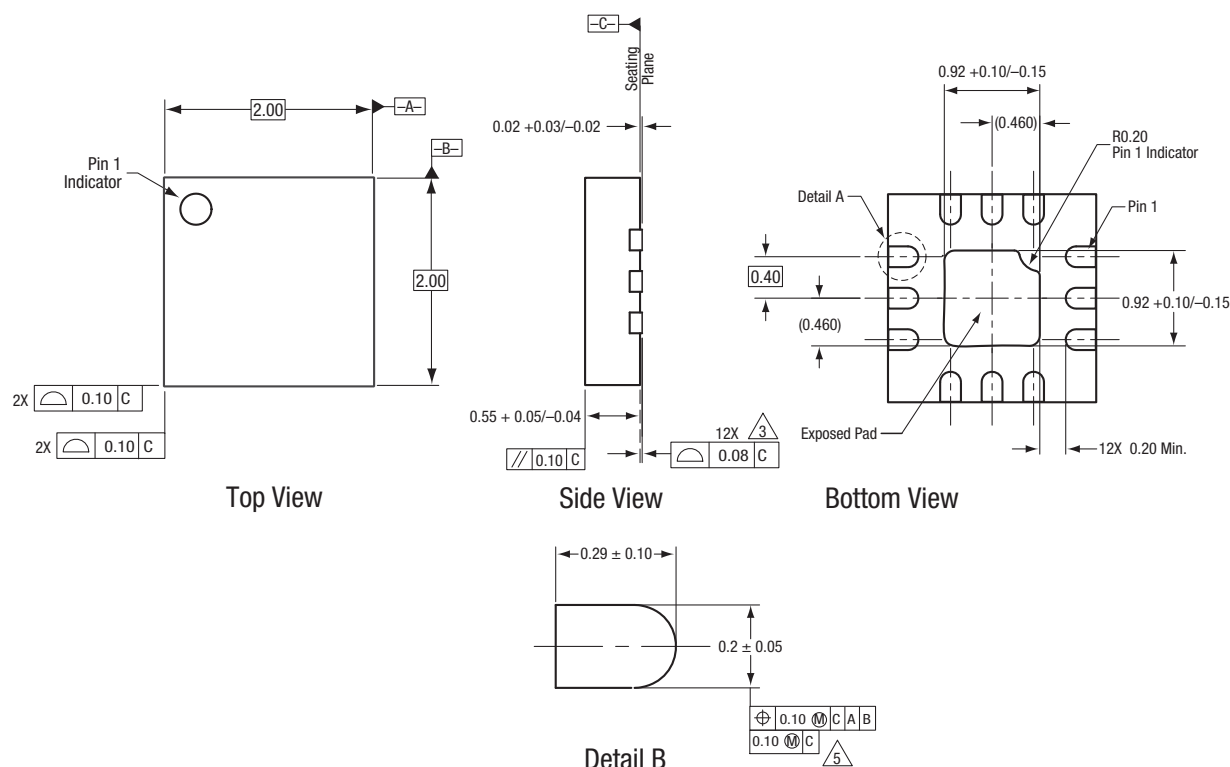
Package dimensions for the 10-pin QFN are shown in Figure 3, and tape and reel dimensions are provided in Figure 4.

## Package and Handling Information

Instructions on the shipping container label regarding exposure to moisture after the container seal is broken must be followed. Otherwise, problems related to moisture absorption may occur when the part is subjected to high temperature during solder assembly.

THE SKY14155 is rated to Moisture Sensitivity Level 1 (MSL1) at 260 °C. It can be used for lead or lead-free soldering.

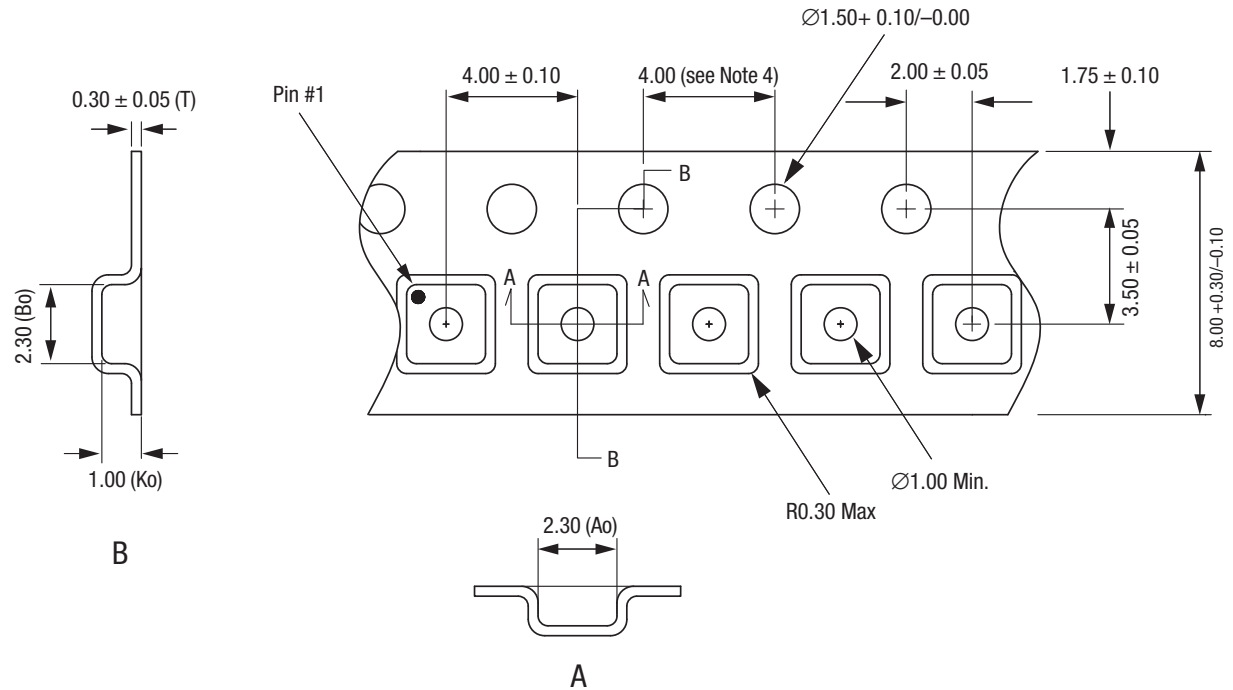
Care must be taken when attaching this product, whether it is done manually or in a production solder reflow environment. Production quantities of this product are shipped in a standard tape and reel format. For packaging details, refer to the Skyworks Application Note, *Discrete Devices and IC Switch/Attenuators Tape and Reel Package Orientation*, document number 200083.



All measurements are in millimeters.  
Dimensioning and tolerancing according to ASME Y14.5M-1994.  
Coplanarity applies to the terminals and all other bottom surface metalization.  
Plating requirement per source control drawing (SCD) 2504.  
Dimension applies to metalized terminal and is measured between 0.15 and 0.30 mm from terminal tip.

S1731

**Figure 3. SKY14155 12-Pin QFN Package Dimensions**



**Notes:**

1. Carrier tape: black conductive polystyrene.
2. Cover tape material: transparent conductive HSA.
3. Cover tape size: 5.40 mm width.
4. Ten sprocket hole pitch cumulative tolerance is  $\pm 0.20$  mm.
5. All measurements are in millimeters.

**S1601**

### Figure 4. SKY14155 Tape and Reel Dimensions

## Ordering Information

Model Name	Manufacturing Part Number	Evaluation Kit Part Number
SKY14155 DP4T Switch	SKY14155	*** TBD ***

Copyright © 2010 Skyworks Solutions, Inc. All Rights Reserved.

Information in this document is provided in connection with Skyworks Solutions, Inc. ("Skyworks") products or services. These materials, including the information contained herein, are provided by Skyworks as a service to its customers and may be used for informational purposes only by the customer. Skyworks assumes no responsibility for errors or omissions in these materials or the information contained herein. Skyworks may change its documentation, products, services, specifications or product descriptions at any time, without notice. Skyworks makes no commitment to update the materials or information and shall have no responsibility whatsoever for conflicts, incompatibilities, or other difficulties arising from any future changes.

No license, whether express, implied, by estoppel or otherwise, is granted to any intellectual property rights by this document. Skyworks assumes no liability for any materials, products or information provided hereunder, including the sale, distribution, reproduction or use of Skyworks products, information or materials, except as may be provided in Skyworks Terms and Conditions of Sale.

THE MATERIALS, PRODUCTS AND INFORMATION ARE PROVIDED "AS IS" WITHOUT WARRANTY OF ANY KIND, WHETHER EXPRESS, IMPLIED, STATUTORY, OR OTHERWISE, INCLUDING FITNESS FOR A PARTICULAR PURPOSE OR USE, MERCHANTABILITY, PERFORMANCE, QUALITY OR NON-INFRINGEMENT OF ANY INTELLECTUAL PROPERTY RIGHT; ALL SUCH WARRANTIES ARE HEREBY EXPRESSLY DISCLAIMED. SKYWORKS DOES NOT WARRANT THE ACCURACY OR COMPLETENESS OF THE INFORMATION, TEXT, GRAPHICS OR OTHER ITEMS CONTAINED WITHIN THESE MATERIALS. SKYWORKS SHALL NOT BE LIABLE FOR ANY DAMAGES, INCLUDING BUT NOT LIMITED TO ANY SPECIAL, INDIRECT, INCIDENTAL, STATUTORY, OR CONSEQUENTIAL DAMAGES, INCLUDING WITHOUT LIMITATION, LOST REVENUES OR LOST PROFITS THAT MAY RESULT FROM THE USE OF THE MATERIALS OR INFORMATION, WHETHER OR NOT THE RECIPIENT OF MATERIALS HAS BEEN ADVISED OF THE POSSIBILITY OF SUCH DAMAGE.

Skyworks products are not intended for use in medical, lifesaving or life-sustaining applications, or other equipment in which the failure of the Skyworks products could lead to personal injury, death, physical or environmental damage. Skyworks customers using or selling Skyworks products for use in such applications do so at their own risk and agree to fully indemnify Skyworks for any damages resulting from such improper use or sale.

Customers are responsible for their products and applications using Skyworks products, which may deviate from published specifications as a result of design defects, errors, or operation of products outside of published parameters or design specifications. Customers should include design and operating safeguards to minimize these and other risks. Skyworks assumes no liability for applications assistance, customer product design, or damage to any equipment resulting from the use of Skyworks products outside of stated published specifications or parameters.

Skyworks, the Skyworks symbol, and "Breakthrough Simplicity" are trademarks or registered trademarks of Skyworks Solutions, Inc., in the United States and other countries. Third-party brands and names are for identification purposes only, and are the property of their respective owners. Additional information, including relevant terms and conditions, posted at [www.skyworksinc.com](http://www.skyworksinc.com), are incorporated by reference.