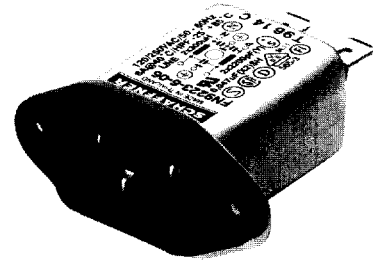


## Compact power entry module

## FN 9223

This family provides IEC 950-compliant power entry, in a slightly shorter housing style than the FN 9222 and with reduced component values for greater cost-effectiveness. Available in versions with up to 10A current ratings, the unit is a good general-purpose choice, especially for portable equipment applications requiring compactness coupled with light weight.



- up to 10A current ratings
- IEC 950-compliant
- lightweight construction
- general-purpose application
- optional medical version (B type)
- snap-in version (S type)

See Mechanical Data (page 42) for details of housings and output connections.

### Filter selection table

Choose the family **FN xxx** with the required body style and features, and add **-??** to determine current rating, and **/??** for output connections. Example: FN 9223-1/06 is a horizontal screw-mounting filter, rated for 1A, with fast-on outputs.

### Approvals



Family	Current ratings A at 40°C (25°)				Output connection		Housing	
	1 (1.2)	3 (3.5)	6 (6.9)	10 (11.6)				
FN 9223 -?? /??	-1	-3	-6	-10	/06	/07*	✓	-
FN 9223S -?? /??	-1	-3	-6	-10	/06	/07*	-	✓
Inductance L mH								
	2.8	0.75	0.3	0.13				

### Additional specifications

Filter type	Capacitance		Maximum leakage µA/phase	Res. R MΩ	Weight g	Maximum operating volt.		Operating frequency Hz	Hipot test voltage	
	Cx nF	Cy nF				VAC	Hz		PN→E VAC	P→N VDC
All standard types	47	2.2	190	-	35*	250	50/60	DC to 400	2000	1700
B types (medical)	47	-	2	1	35*	250	50/60	DC to 400	2500	1700

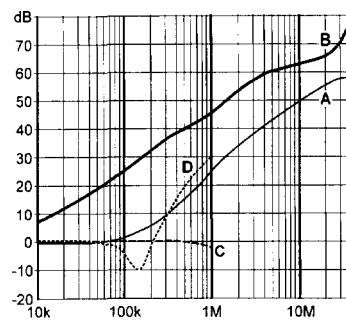
MTBF at 40°C, 230V, per Mil-HB-217F: 2,200,000 hours

\*/07 outputs add 5g

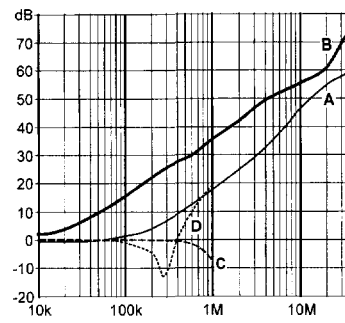
## Insertion loss

Per CISPR 17; A = 50Ω/50Ω sym, B = 50Ω/50Ω asym, C = 0.1Ω/100Ω sym, D = 100Ω/0.1Ω sym

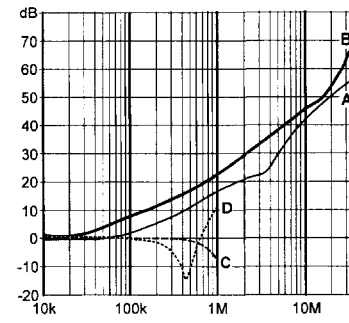
### 1 amp types



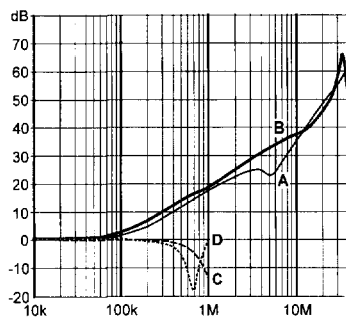
### 3 amp types



### 6 amp types

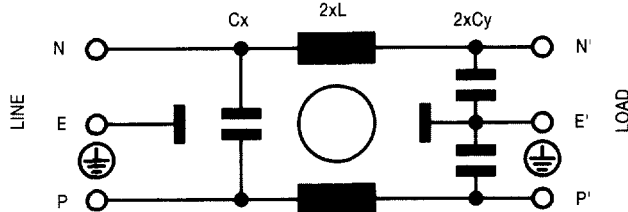


### 10 amp types

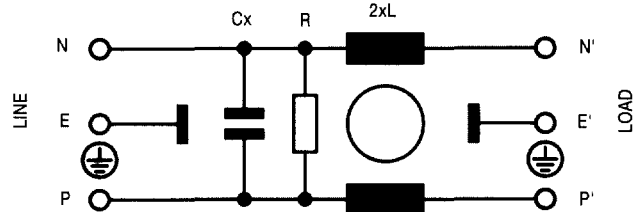


## Electrical schematics

FN 9223



FN 9223B

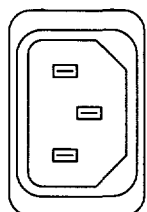


See tables for component values

## Snap-in version FN 9223S

(Possible thickness of mounting panels see page 43)

Front



Side

