

FCI PRODUCT NUMBER	CUSTOMER PART NUMBER
10080068-1GC0042LF	RPM 213 234/01650

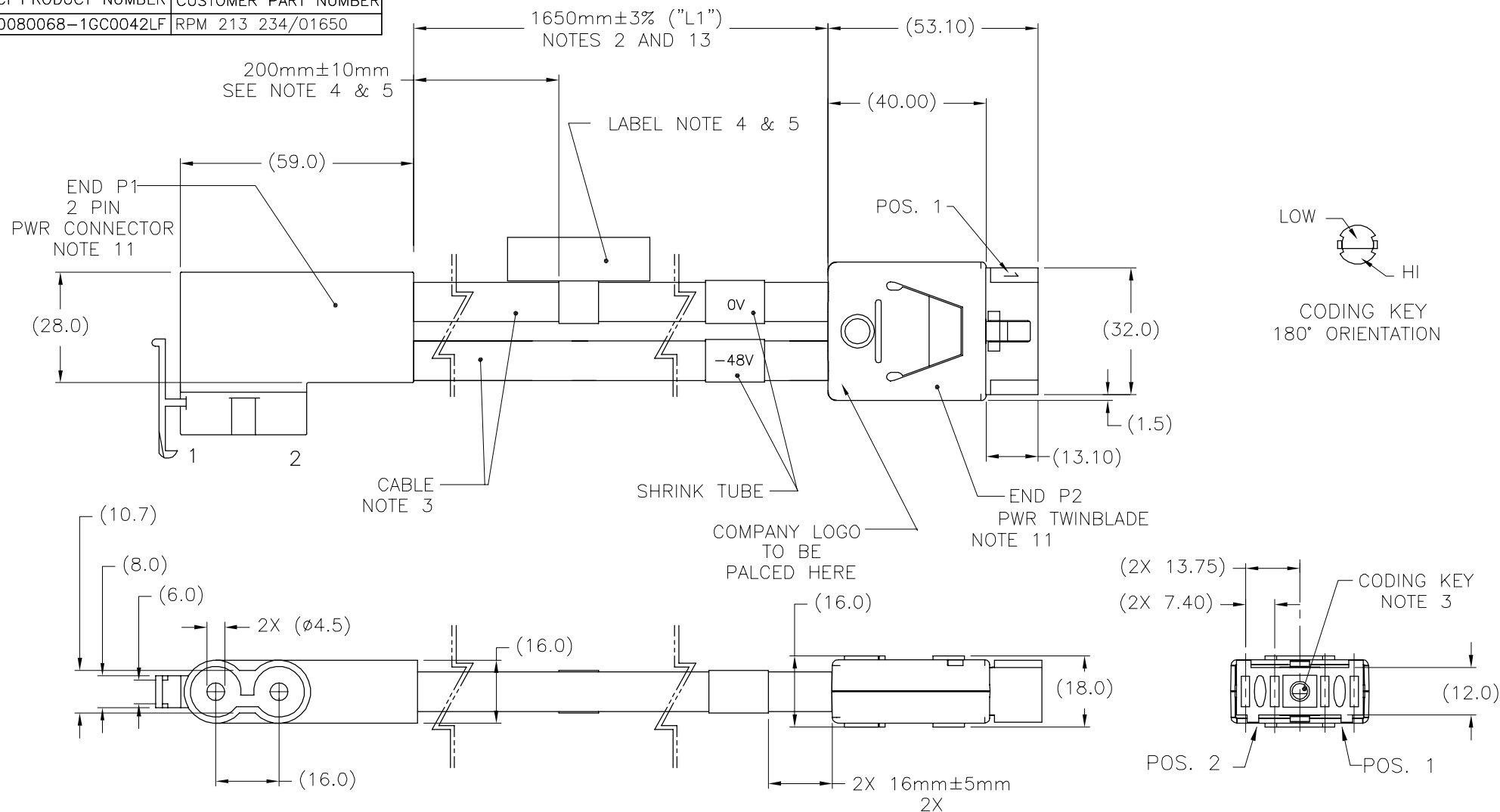


TABLE 1 (WIRING LIST SEE NOTE 6)

END P1		END P2	
1	BLACK	0V	1
2	BLACK	-48V	2

mat'l. code SEE NOTES				surface ISO 1302 ✓	tolerance ISO 406 ISO 1101	projection mm	product family C&A
ltr	ecm no	dr	date	tolerances unless otherwise specified			
A	V08-0283	DAI	2008-06-26	angles	linear	0.X±0.3 0.XX±0.10 0.XXX±0.050	title PWR TWINBLADE I/O CABLE ASSEMBLY
				dr	D.INGRAM	2008/06/04	dwg no
				enr	C.GROSS	2008/06/04	sheet 1 of 3
				chr	C.GROSS	2008/06/04	size
				appd	C.GROSS	2008/06/04	10080068-1GC0042
sheet	revision	A	A	A			A3
index	sheet	1	2	3			
							type
							Product Customer Drawing

PDM: Rev:A

STATUS: Released

Printed: Jul 30, 2008

PRODUCT NUMBER

SEE SHEET 1

NOTES:

1. END P1 MATES WITH: CONNECTOR AS DEFINED PER ERICSSON RPT 247 007/05.
END P2 MATES WITH: FCI CONNECTOR: 51939-219LF

- ② UNLESS OTHERWISE SPECIFIED ASSEMBLED LENGTH TOLERANCE =
< = 1 METER: $\pm 15.0\text{mm}$
> 1 METER TO 10 METER: $\pm 2\%$ OF L1 (CUSTOMER DEFINES)
> 10 METER: $+0.00\%$ / -4% OF L1 (CUSTOMER DEFINES)

- ③ PART NUMBER DESCRIPTION:
10080068 - 1 G C 0042 LF

LF: LEAD FREE (NOTE 10)

CUSTOMER SPECIFIC DASH NUMBER

STYLE:

	END P1 CONNECTOR STYLE	END P1 CONNECTOR STYLE
1:	2 PIN POWER CONNECTOR	STRAIGHT TWINBLADE CONNECTOR

CODING KEY:

	ORIENTATION
C:	180°

WIRE SIZE:

	WIRE SIZE	DESCRIPTION	NOTES
G:	16mm ²	STRANDED	HALOGEN FREE

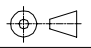

mat'l. code SEE NOTES				surface ISO 1302 <input checked="" type="checkbox"/>	tolerance ISO 406 ISO 1101	projection 	product family C&A			
ltr	ecr no	dr	date	tolerances unless otherwise specified		 mm	title PWR TWINBLADE I/O CABLE ASSEMBLY			
A				angles	linear					
				0°±x°	0.X±0.3 0.XX±0.10 0.XXX±0.050					
				dr	D.INGRAM	2008/06/04	 scale 1:1			
				engr	C.GROSS	2008/06/04				
				chr	C.GROSS	2008/06/04				
				appd	C.GROSS	2008/06/04				
sheet index	revision sheet									

PRODUCT NUMBER

SEE SHEET 1

NOTES CONTINUED:

4. LABEL TO BE LOCATED 200mm FROM REAR OF CONNECTOR P1.
5. LABEL TO MEET ERICSSON SPECIFICATION 102-01-113, SECTION 5.2.
6. ALL CABLE ASSEMBLIES SHALL BE TESTED 100% FOR CONTINUITY AS DEFINED IN WIRING LIST.
7. UNLESS OTHERWISE SPECIFIED ALL CABLE ASSEMBLIES SHALL BE 100% HI-POT TESTED BY APPLYING 300V DC FOR MINIMUM OF 10ms, UNLESS ACTIVE COMPONENTS ARE USED IN THIS ASSEMBLY.
8. OTHER TESTING PERFORMED AS REQUIRED BY PRODUCT SPECIFICATION: GS-12-389.
9. THIS DIMENSION IS A FINISHED PRODUCT LENGTH.
10. LEAD FREE PRODUCTS MEET EUROPEAN UNION DIRECTIVES AND OTHER COUNTRY REGULATIONS AS DESCRIBED IN GS-22-008.
11. ASSEMBLY SHOWN IS FOR REFERENCE ONLY AND MAY NOT SHOW ALL PART DETAIL. REFERENCE CONNECTOR ASSEMBLY DRAWINGS FOR COMPLETE DETAILS.
12. GLOBAL STANDARDS FOR CABLE PACKAGING: GS-14-1093.
13. A "△" SYMBOL WILL BE NEXT TO ANY DIMENSION, VIEW, OR NOTE WHICH HAS BEEN MODIFIED WITH THE CURRENT DRAWING REVISION." THE CURRENT REVISION WILL BE SHOWN IN THE SYMBOL △ .

mat'l. code		surface ISO 1302		tolerance ISO 406 ISO 1101		projection 		product family C&A	
ltr	ecr no	dr	date	tolerances unless otherwise specified		mm		title	
A				angles	linear	mm		PWR TWINBLADE I/O CABLE ASSEMBLY	
				0°±x°	0.X±0.3 0.XX±0.10 0.XXX±0.050	scale 1:1		dwg no	
				dr	D.INGRAM	2008/06/04			sheet 3 of 3
				engr	C.GROSS	2008/06/04	10080068-1GC0042		size A3
				chr	C.GROSS	2008/06/04	type Product Customer Drawing		
				appd	C.GROSS	2008/06/04			
sheet index	revision sheet								