



INTERNATIONAL SEMICONDUCTOR, INC.

TRANSIENT VOLTAGE SUPPRESSOR NETWORKS

SIP and DIP TVS Networks manufactured to your specifications, covering a wide range of clamping voltages (6.8-440V), and Peak Power to 1500 kW. Protect any number of data lines or circuits with a unique, low cost, low capacitance design

Fast response times, low capacitance, and high current handling capability makes these TVS Networks ideal for most applications.

TYPICAL TVS PARAMETERS

Breakdown Voltages	6.8 to 400 V
Response Times	1 pS & 5 nS
Capacitance (Low Cap Types)	25 pF
Reverse Leakage Current	1 uA @ >10 V
Peak Pulse Power	300-1500 W
	10/1000 uS waveform

FEATURES

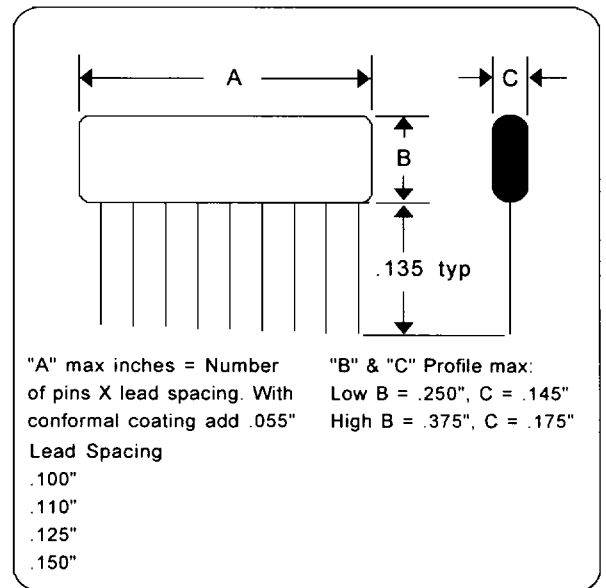
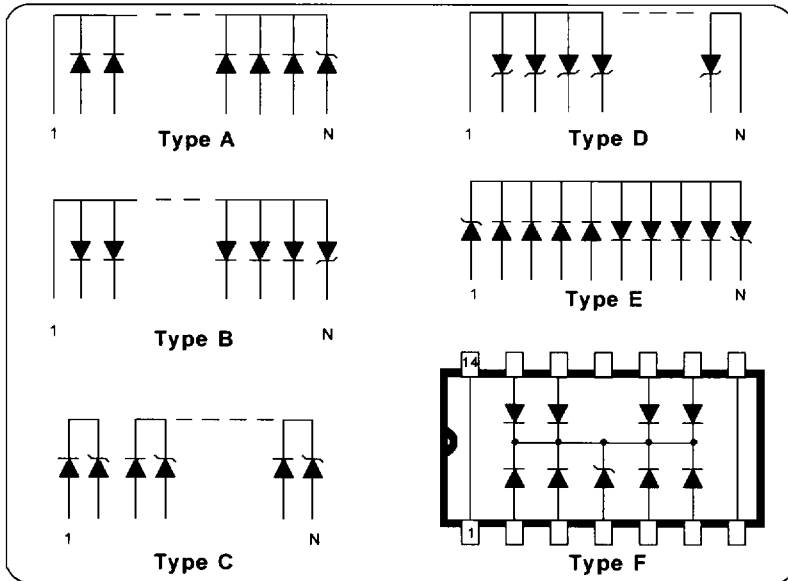
- .100" Pin Centers
- EDS and EMI Protection
- Power Surge Protection
- SIP - DIP - SMT Types
- Uni & Bidirectional
- Low capacitance Types
- Any Number of Lines
- Prototypes in 10 Days

NETWORK TYPES

- TVS
- DIODES
- ZENERS
- SCHOTTKY

DIP REPLACEMENTS FOR:

- 8 Pin - 4 & 6 Line
- 16 Pin - 8, 12, & 15 Line



ORDERING INFORMATION

TVS 5 A 09 CC 18A 4 S

- Special Feature (or omit)
- Peak Power: 4=400 Watts, etc
- Breakdown Voltage/Suffix
- CC/CA/or B
(common anode/cathode/or bidirectional)
- Number of Pins
- Circuit Type (See Drawings)
- Package Type: 5=SIP 3=DIP
- Transient Voltage Suppressor

SPECIAL FEATURES

- Mixed Values
- Mixed Types
- Any # of Common Pins
- Common Pin(s) Location
- Add Passive Components
- Any Arrangement
- Special Packaging