

### SPECIFICATIONS

#### Mechanical

**Mating Force:** 4.5Pounds max.(RJ45) 7.7Pounds max.(USB)  
**Unmating Force:** 4.5Pounds max.(RJ45) 2.2Pounds min.(USB)  
**Durability:** 1000 Cycles(RJ45) 1500 Cycles(USB)

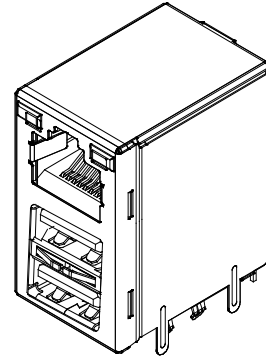
#### Electrical

**Current Rating:** 1.5A max.(RJ45) 1.0A(USB)  
**Dielectric Withstanding Voltage:** 1000V(RJ45) 500V(USB)  
**Insertion Loss:** -1.0dB max @ 1-100MHz  
**Return Loss:** -12dB min @ 1-80MHz  
**Cross Talk:** -35dB min @ 1-65MHz

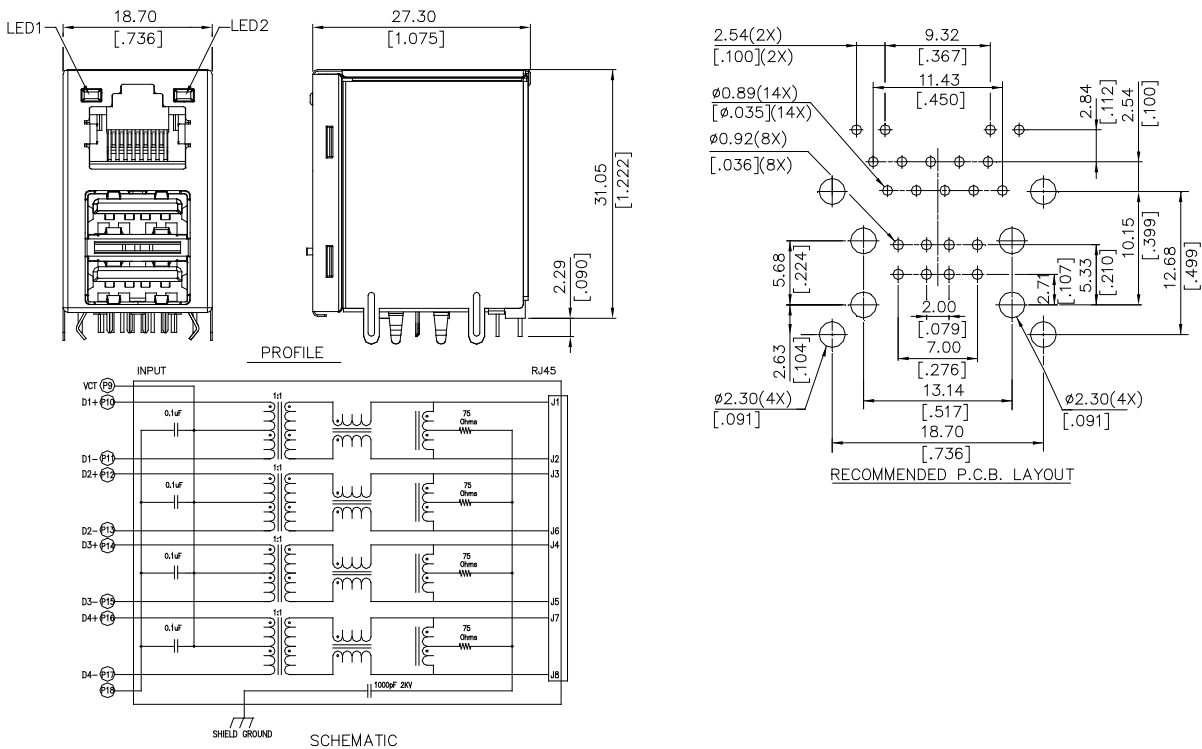
#### Physical

**Housing:** Thermoplastic, UL 94V-0 rated in Black Color  
**Contact:** Copper Alloy  
**Shell:** Copper Alloy  
**Operating Temperature:** -40°C to +85°C

**JFM Series**  
**RJ45 Over Dual USB**  
**R/A, T/H Type**  
**1.27mm [.050"] Pitch**  
**10/10/1000 Base-T**



### DRAWING



### ORDERING INFORMATION

PRODUCT NO.: JFM 3 1 U 1 \* - 01W 4 - 4 F

Series Prefix  
JFM=Jack with Magnetics

Protocol Type  
3=10/100/1000 Base T

Core Count  
1=12-Core

Configuration  
U=Combo USB

Finish Treatment  
F=Lead Free

Packaging  
4=Soft Tray

Extension Code

LEDS  
See Notes

PCB Attachment Method  
1=Solder Tail

JFM25U1H-01W4-4F	19 ORANGE	20	21 GREEN	22
JFM25U1G-01W4-4F	19 YELLOW	20	21 GREEN	22 ORANGE
JFM25U1F-01W4-4F	19 GREEN	20	21 ORANGE	22 GREEN
JFM25U1B-01W4-4F	19 GREEN	20	21 YELLOW	22
JFM25U1A-01W4-4F	19 GREEN	20	21 GREEN	22 YELLOW
JFM25U14-01W4-4F	19 YELLOW	20	21 YELLOW	22
JFM25U13-01W4-4F	19 GREEN	20	21 YELLOW	22
JFM25U12-01W4-4F	19 GREEN	20	21 GREEN	22
JFM25U11-01W4-4F	19 YELLOW	20	21 GREEN	22
JFM25U10-01W4-4F	NONE		NONE	
P/N	LED1		LED2	