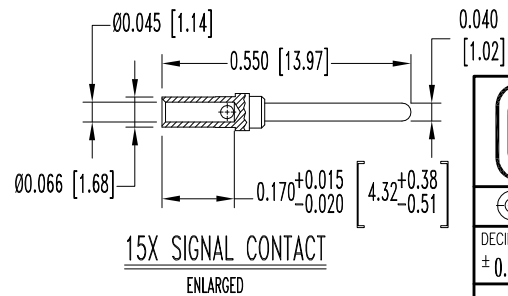
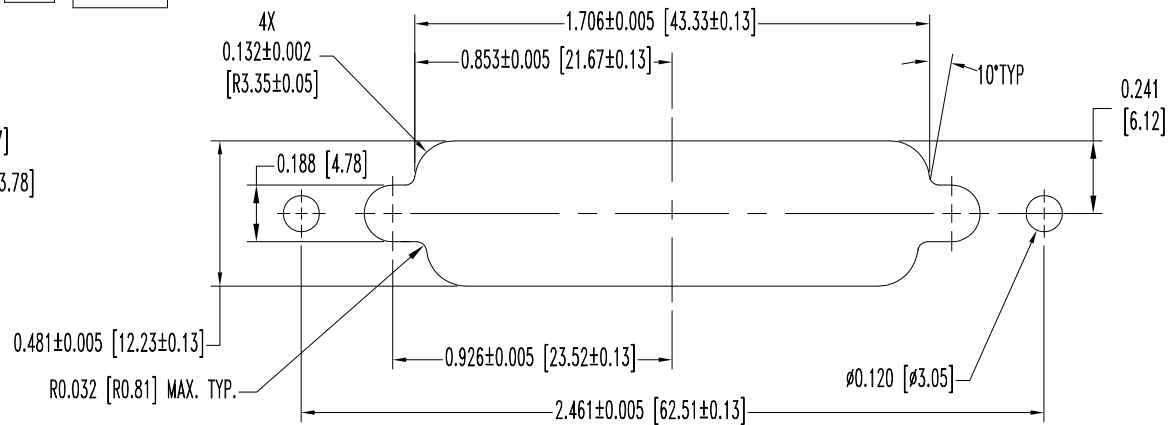
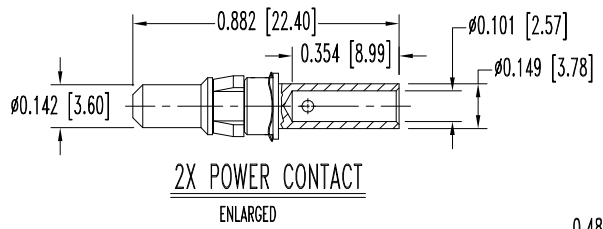
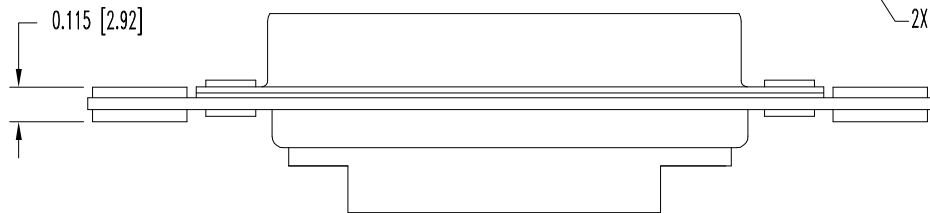
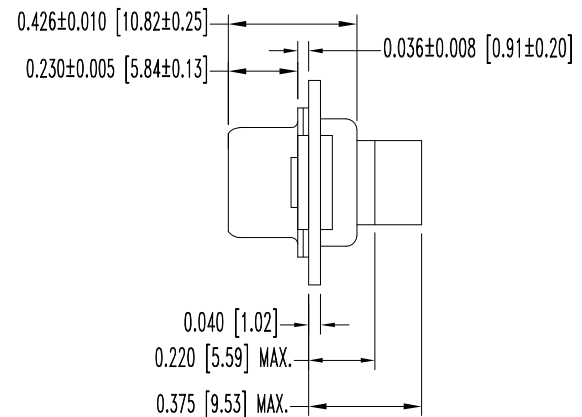
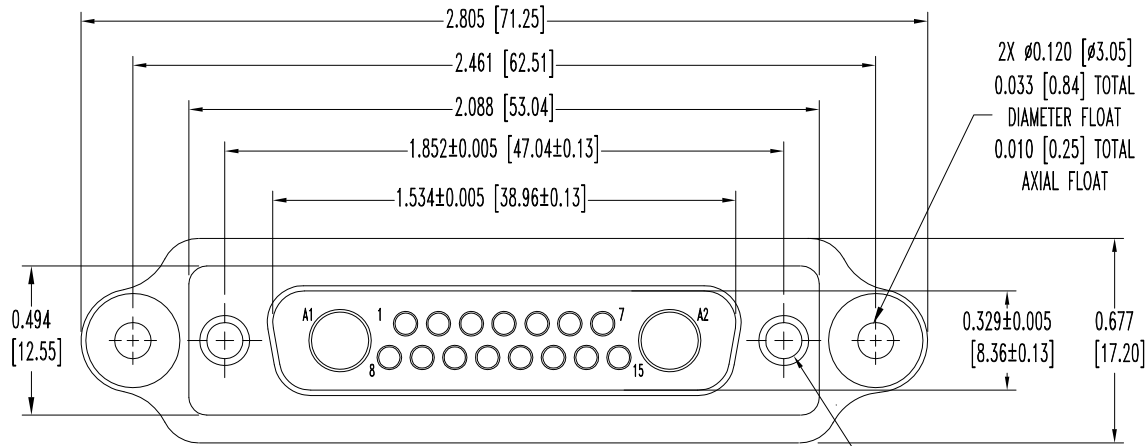


THIS DRAWING CONTAINS INFORMATION PROPRIETARY TO POSITRONIC AND ITS SUBSIDIARIES. POSITRONIC BELIEVES THE DATA ON THIS DRAWING TO BE RELIABLE. SINCE THE TECHNICAL INFORMATION IS GIVEN FREE OF CHARGE, THE USER EMPLOYS SUCH INFORMATION AT HIS OWN DISCRETION AND RISK. POSITRONIC ASSUMES NO RESPONSIBILITY FOR RESULTS OBTAINED OR DAMAGES INCURRED FROM USE OF SUCH INFORMATION IN WHOLE OR IN PART.

| DATE | REV | REVISION RECORD | APP | DR | CK |
|----------|-----|-----------------|-----|----|----|
| 12-17-07 | NC | ECO 28767 | RCW | YK | TK |
| 2-24-10 | A | ECO 32152 | TK | BS | TK |
| | | | | | |



PANEL CUTOUT

- NOTES:
- MATERIALS AND FINISHES:
INSULATOR: GLASS FILLED POLYESTER PER ASTM-D5927, UL94V-0, COLOR: BLUE.
CONTACTS: PRECISION MACHINED COPPER ALLOY, GOLD FLASH OVER NICKEL PLATE.
SHELLS: STEEL, ZINC PLATE WITH CHROMATE SEAL.
MOUNTING PLATE: ALUMINUM WITH YELLOW ANODIZE.
FLOAT WASHERS AND BUSHINGS: BRASS, ZINC PLATE WITH CHROMATE SEAL.
 - DETAILED PRODUCT, MECHANICAL, AND ELECTRICAL INFORMATION IS AVAILABLE IN THE LATEST STANDARD DENSITY COMBO-D PRODUCT PUBLICATION. VISIT CONNECTPOSITRONIC.COM/PRODUCTS/1/STANDARD DENSITY COMBO-D OR CONNECTPOSITRONIC.COM.
 - MOS ALLOWS FOR BLIND MOUNTING PLATE TO BE INSTALLED.
 - DIMENSIONS ARE IN INCHES [MILLIMETERS].

| | | | | |
|--------------------------------|--------------------------------------|--|----------------|--------------------|
| | | POSITRONIC INDUSTRIES INC. www.connectpositronic.com | | FSCM 28198 |
| | CBC SERIES | SCALE N.T.S. | DRAWN BY YK | APPROVED BY RCW |
| DECIMAL TOL. ± 0.015 [0.38] | TITLE CBC17W2M110000-759.1 | | | |
| ANGULAR TOL. ± 5° | DATE 12-17-07 | DRAWING NUMBER SK9143 | REV. A | |