

Type CB10 Series

Key Features

- Low Cost
- Robust Enclosed Construction
- Spindle Adjust Versions
- Flame Retardant
- Arrow Position Indicator
- Top, Bottom and Side Adjust Styles
- Stable in High Humidity
- Edgewise Operation Style



Low price, versatility and stable environmental characteristics are important benefits of this product. Featuring an innovative carbon resistive element printed on film in a fully enclosed package, this potentiometer style is normally chosen for a wide range of applications in industrial, professional and consumer equipment.

Characteristics - Electrical

| | |
|---------------------------------|--|
| Resistance Range: | 100R to 10M Linear , 1K to 1M Non-Linear |
| Resistance Values: | 1, 2.2 & 4.7 in each decade |
| Resistance Tolerance: | ± 20% (± 30% above 1 Megohms) |
| End Resistance: | < 3% |
| Power Rating @ 40°C: | 0.15 Watts (derating to zero at 70°C) |
| Maximum Voltage: | Lin. 200V DC / Log. 150V DC |
| Rotational Noise (CRV): | <5% of Rn nominal |
| Temperature Coefficient: | ±500 ppm/°C(< 100K ohms) |
| Slider Current: | 50mA |
| Resolution: | Essentially Infinite |
| Electrical Adjustment: | 240° Nominal 1 Turn |

Characteristics - Mechanical

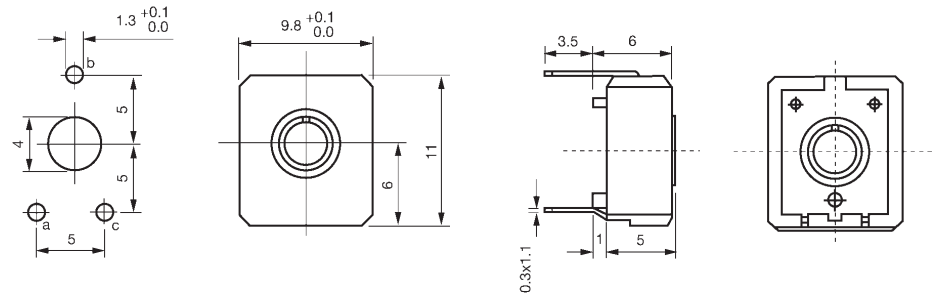
| | |
|-------------------------------|----------------|
| End Torque: | 50 mNm maximum |
| Starting Torque: | 4 to 20 mNm |
| Mechanical Adjustment: | 295° nominal |
| Weight: | 0.8 grams |

Characteristics - Environmental

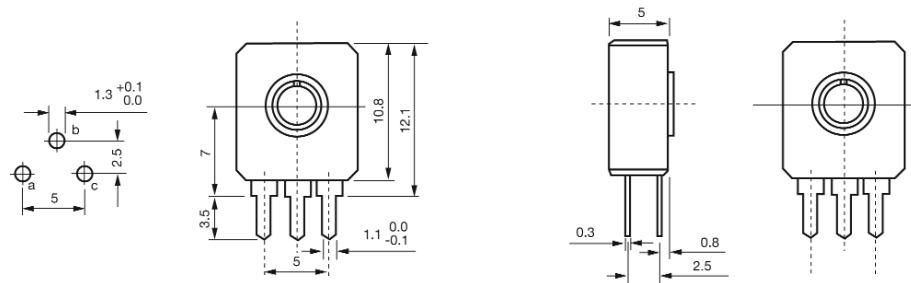
| | |
|-----------------------------|--|
| Temperature Range: | -25°C to +70°C |
| Temperature Storage: | 1000 hours at 100°C |
| Rotational Life: | 500 cycles, minimum (10000 cycles-extended life versions) |
| Load Life at 40°C: | ΔR <10% after 1000 hours |
| Sealing: | Dust and Splash Proof |
| Climate Category: | 25/70/21 |

Type CB10 Series

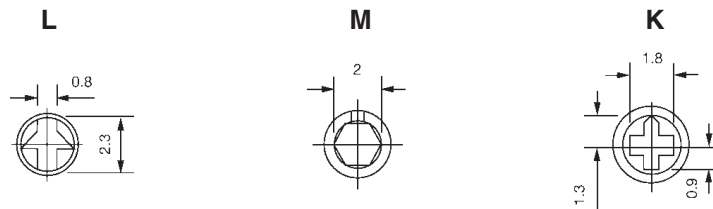
Dimensions CB10V



CB10H

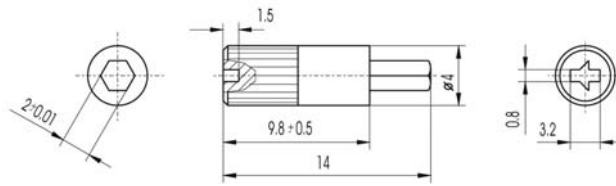


Adjustment Styles

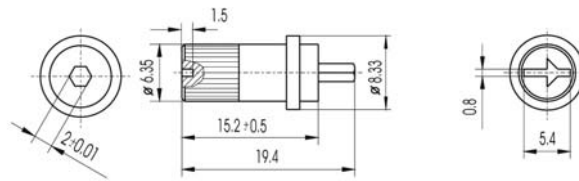


Type CB10 Series

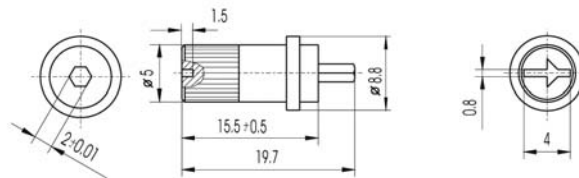
Plug-In Spindles / Edgewheels



| Colour | Part Number |
|--------|-------------|
| White | CB101161 |
| Black | CB101387 |
| Red | CB101490 |
| Blue | CB101598 |



| Colour | Part Number |
|--------|-------------|
| White | CB101446 |
| Black | CB101489 |
| Red | CB101502 |



| Colour | Part Number |
|--------|-------------|
| White | CB101544 |
| Black | CB101589 |
| Red | CB101776 |

How to Order

| CB10 | L | H | 102 | M | - |
|----------------------------|--|--|--|--|----------------------------------|
| Common Part | Adjustment Style | Orientation | Resistance Value | Tolerance | Features |
| CB10 - 10mm Carbon Trimmer | L - Arrow Head M - Hex Centre K - Cross Slot | H - Vertical to PCB V - Horizontal to PCB | The first two digits are significant figures of resistance value and the third denotes the number of zeros following. e.g. 100R: 101 1K0: 102 10K: 103 100K: 104 | K - 10% (Special) M - 20% N - 30% (<1 Meg) | -- Standard E - Extended Life |

TE Connectivity, TE connectivity (logo) and TE (logo) are trademarks.
Other logos, product and Company names mentioned herein may be trademarks of their respective owners.

While TE has made every reasonable effort to ensure the accuracy of the information in this datasheet, TE does not guarantee that it is error-free, nor does TE make any other representation, warranty or guarantee that the information is accurate, correct, reliable or current. TE reserves the right to make any adjustments to the information contained herein at any time without notice. TE expressly disclaims all implied warranties regarding the information contained herein, including, but not limited to, any implied warranties of merchantability or fitness for a particular purpose. The dimensions in this datasheet are for reference purposes only and are subject to change without notice. Specifications are subject to change without notice. Consult TE for the latest dimensions and design specifications.