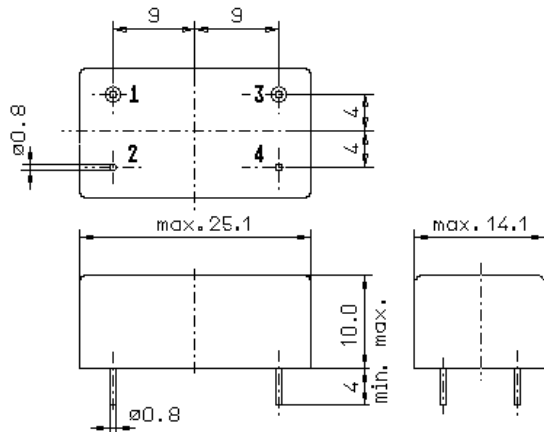


Specification for monolithic crystal filter:

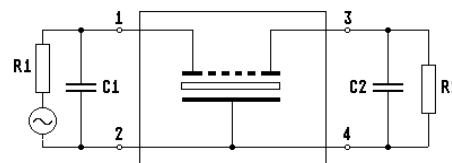
**MQF 30.0-0600/03**

**1. General**

1.1. Package:



GM3



- 1.2. Type name: MQF 30.0-0600/03
- 1.3. Number of poles: 6
- 1.4. Operating temperature range: -20°C to +70°C
- 1.5. Storage temperature range: -45°C to +85°C

**2. Electric values**

- 2.1. Nominal centre frequency  $f_0$ : 30.0 MHz
- 2.2. **Pass band**
  - 2.2.1. Bandwidth between 3 dB - frequencies:  $> f_0 \pm 3.0$  kHz
  - 2.2.2. Ripple:  $< 2.0$  dB at  $f_0 \pm 2.0$  kHz
  - 2.2.3. Insertion loss:  $< 5.5$  dB  
( measured on smallest attenuation in pass band )
- 2.3. **Stop band**
  - 2.3.1.  $f_0 \pm 10$  kHz:  $> 40$  dB
  - 2.3.2.  $f_0 \pm 12.5$  kHz:  $> 60$  dB
  - 2.3.3. Alternate Attenuation:  $> 60$  dB
- 2.4.1. Nomial input power level: 0 dBm
- 2.4.2. Maximal input power level: +15 dBm
- 2.5. Terminating impedance R/C ( input and output ):  $50 \Omega // 0$  pF
- 3. Marking on the package: manufacturer, date code  
MQF 30.0-0600/03
- 4. Environment conditions: Corresponding to Telefilter CF001

Edited by: \_\_\_\_\_ date: \_\_\_\_\_ name: \_\_\_\_\_