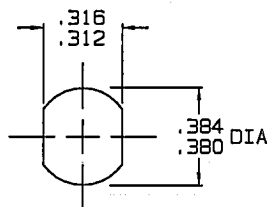


RED INDICATES ORIGINAL

DATA CONTAINED IN THIS DOCUMENT IS PROPRIETARY TO TROMPETER ELECTRONICS INC. AND SHALL NOT BE DISCLOSED, COPIED OR USED FOR PROCUREMENT OR MANUFACTURE WITHOUT EXPRESS WRITTEN PERMISSION.

DASH NO	CABLE ACCOMMODATED	FIG	ASSEMBLE PER
-1	RG-58	1,3	TAI-101
-2	RG-59		
-2A	BELDEN 8274		
-2B	WECD 730A		
-3	RG-223		
-3A	RG-55		
-4	RG-122		
-5	RG-174		
-5A	RG-196		
-5B	HEWLETT-PACKARD 8120-1107		
-21	RG-303		
-22	RG-180		
-31	RG-187 DBL SHLD		
-34	BELDEN 8228		
-36	MICRODOT 275-3991		
-37	810 RAYCHEM		
-41	BELDEN 9248		
-086	RG-405	2	TAI-130
-141	RG-402		

INCH	MM
.096	2.44
.125	3.18
.312	7.92
.316	8.03
.380	9.65
.384	9.75
.530	13.46
.979	24.87
1.105	28.07
1.846	46.89



RECOMMENDED
PANEL CUTOUT
MAX PNL THK .125

REV			DESCRIPTION		105-0293		SH 1C
REV	ED		DESCRIPTION	DWN	APPROVED	DATE	
K	13113		ADDED NOTE Δ & REVISED BOM SEE ECO	R L		10/25/99	

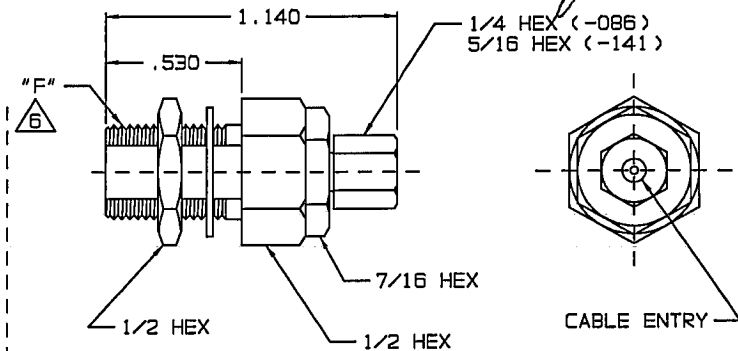


FIG 2

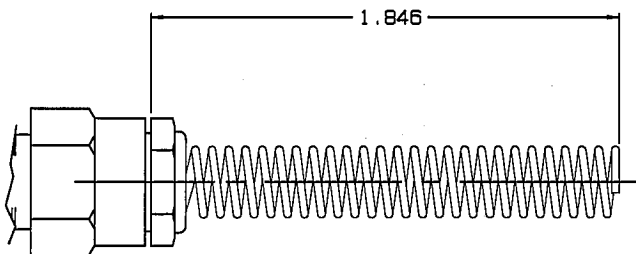


FIG 3 Δ

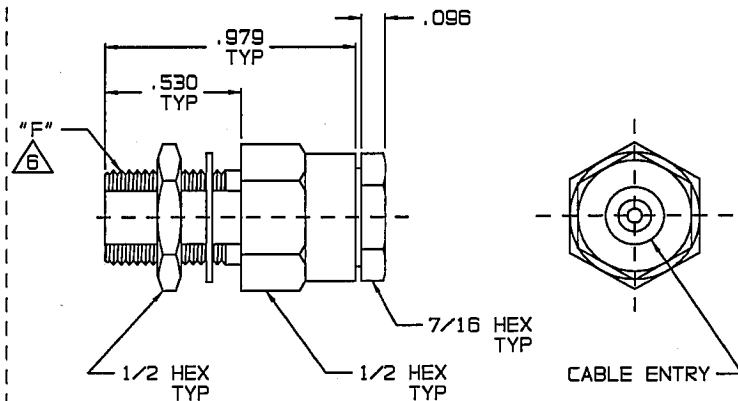


FIG 1 Δ

4. 75 OHM FEMALE TYPE F COAXIAL BULKHEAD CABLE JACK
3. MAX PANEL THK .125
2. FINISH: TFS-1A (NICKEL)
1. ALL DIM ARE IN INCHES

Δ IF BEND RELIEF SPRING REQUIRED (FIG 3) ADD SUFFIX "BR" TO MODEL NO. (NOT AVAILABLE WITH CABLE GROUPS -086, -141)

Δ "F" CONNECTOR INTERFACE ACCOMMODATES DIM'S .024-.033 CABLE CENTER CONDUCTORS & / OR PIN CONTACTS

QTY	DESCRIPTION		PART NUMBER	ITEM
TOL UNLESS SPECIFIED				
.XX	±		TROMPETER ELECTRONICS, INC.	
.XXX	± .005			
.XXXX	±			
.XXXXX	±			
ANGLES				
DWN	R L	10/22/99	MATERIAL	CODE IDENT
CHK		10-25-99		14949
ENGR				
APPR		10-25-99	SCALE 2/1	DATE 5/9/73
NEXT ASSY				SHEET 1C

BJ139/BJ139BR

DRAWING NO. 105-0293
REV K