

FEATURES AND SPECIFICATIONS

Features and Benefits

- 15A per blade current carrying capacity
- Female on backplane for safety
- 3 mating lengths for live insertion
- 12mm module can be distributed between signal modules as needed
- Integral stiffener combines signal, power and guidance modules
- Metric connector in Futurebus form factor
- Surface Mount Compatible

Reference Information

Product Specification: PS-73651-1998

Packaging: Tube

UL File No.: E29179

Mates With: [73656](#)

Designed In: Millimeters

Electrical

Current: 15.0A

Dielectric Withstanding Voltage: 1000V

Insulation Resistance: 1000 MΩ min.

Mechanical

Insertion Force: 55N max. per press-fit pin

Retention Force: 15N min. per press-fit pin

Mating Force: 2.5N max. per contact

Unmating Force: 0.15N min.

Normal Force: 1.0N min.

Durability: 250 cycles

Physical

Housing: Liquid crystal polymer

Contact: Blades—0.5mm thick Copper

Receptacle—0.4mm Beryllium Copper Alloy

Plating: 30µ" Gold

Operating Temperature: -55 to +105°C



2.00mm (.079") Pitch

HDM*

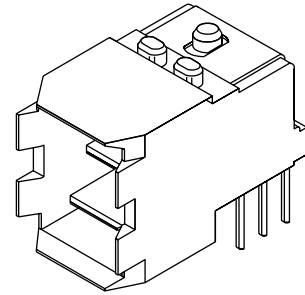
Board-to-Board

Daughterboard Power Module

73651

Right Angle

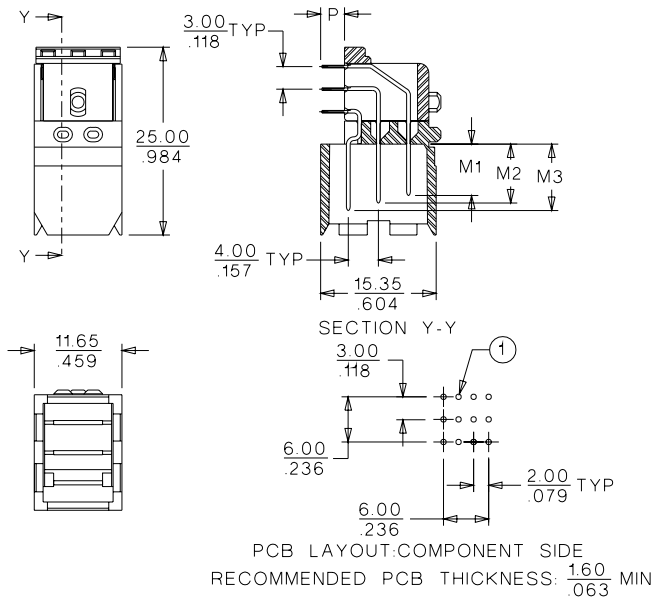
3-Blade Module



Backplane Connector Systems



CATALOG DRAWING (FOR REFERENCE ONLY)



- ① 0.71 DIA plated thru hole TYP
- 0.028
- 0.838 DIA drilled hole
- 0.0330

Note: Solder tail version shown

ORDERING INFORMATION AND DIMENSIONS

Module	Termination	Order No.	Dimension P
Daughter Card Power Module	Solder Tail	73651-0033	2.00 (.079)
	Solder Tail	73651-0133	2.50 (.098)
	Solder Tail	73651-0233	3.00 (.118)
	Solder Tail	73651-0333	3.50 (.138)
	Solder Tail	73651-0433	4.00 (.157)
	Solder Tail	73651-0XXX	Contact Molex
	Press-Fit	73651-1XXX	3.50 (.138)

Application Note: Connectors are Ordered as Part of an Assembly, Not Individually

The HDM and HDM^{PLUS} daughtercard connectors are composed of modules. The complete connector with a number of modules, stiffener and hold-downs is given a specific part number so that a user only needs to order one connector. We show the individual modules in this catalog, but they are always delivered as completed connectors on a stiffener. On the customer print for the stiffener is the complete PCB footprint showing holes for signal and power contacts, plus appropriate mounting holddown features. Most customers use solder-to-board versions of the RA receptacles, but press-fit RA receptacles are an option.

* High Density Metric and HDM^{PLUS} are trademarks of Teradyne, Inc.

Note: The versions listed here have 3 mating levels: M1-short, M2-medium and M3-long, please contact Molex for more information

MATERIAL NUMBER ASSIGNMENT

TAIL TYPE
 0 = SOLDER
 1 = PRESS FIT

73651- * * * *

PC TAIL LENGTH

CODE	DIM "P"
0	2.00
1	2.50
2	3.00
3	3.50
4	4.00
5	2.75

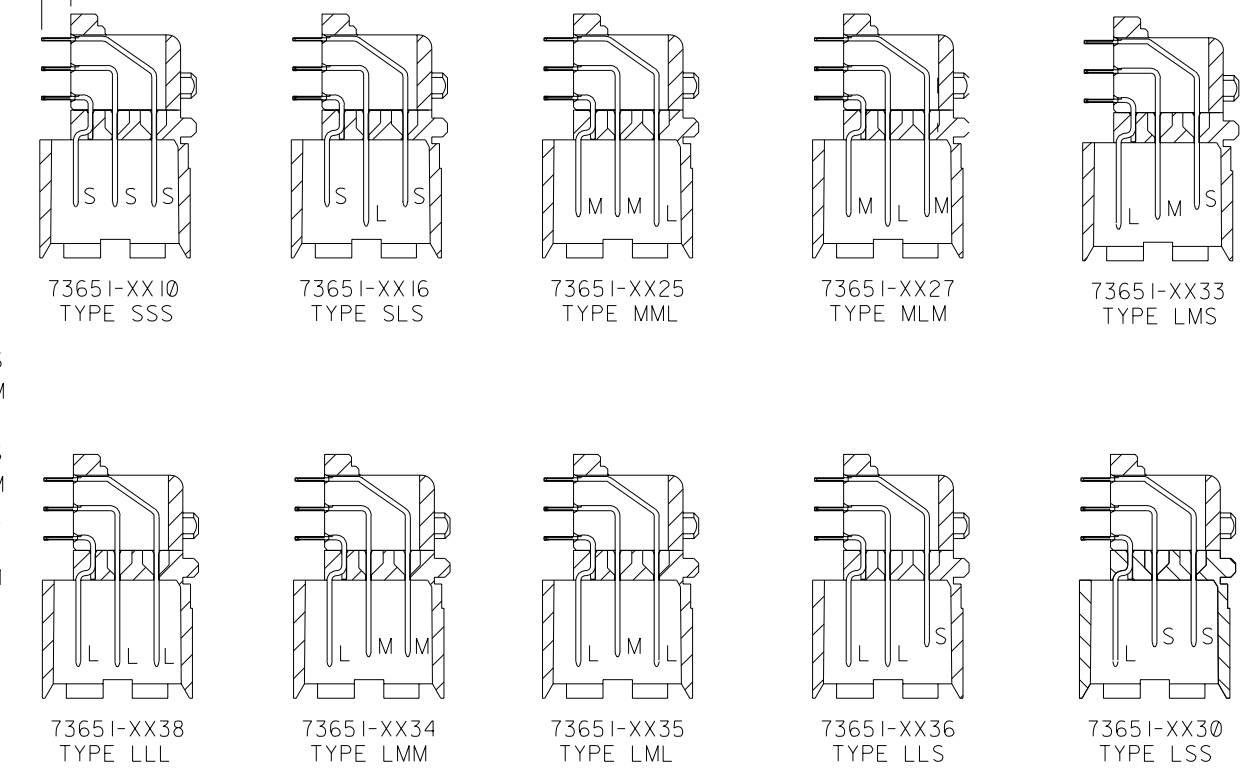
MATING LENGTH

10 = SSS	20 = MSS	30 = LSS
11 = SSM	21 = MSM	31 = LSM
12 = SSL	22 = MSL	32 = LSL
13 = SMS	23 = MMS	33 = LMS
14 = SMM	24 = MMM	34 = LMM
15 = SML	25 = MML	35 = LML
16 = SLS	26 = MLS	36 = LLS
17 = SLM	27 = MLM	37 = LLM
18 = SLL	28 = MLL	38 = LLL

PRESSFIT TAILS AVAILABLE IN THESE LENGTHS ONLY

DIM. "P" ±0.25

MATING LENGTH EXAMPLES



DIMENSIONS SHOWN (METRIC) INCH	
UNLESS OTHERWISE SPECIFIED TOLERANCES: ANGULAR ± 1/2°	
INCH	METRIC
3 PLACE ± N/A	---
2 PLACE ± N/A	± ---
1 PLACE ---	± ---

DRAFT WHERE APPLICABLE MUST REMAIN WITHIN DIMENSIONS

DRWG. BY	CHK'D. BY
JRR	SMR
APP'D. BY	SCALE
CAB	2 : 1

REVISIONS

REV.	DATE	DESCRIPTION
E		SEE SHEET I
D		SEE SHEET I
C		SEE SHEET I
B		SEE SHEET I
A		SEE SHEET I

SALES ASSY, HDM DAUGHTER CARD POWER MODULE

MOLEX INCORPORATED
 LISLE, ILL. 60532 U.S.A.

FILE NAME: S73651X2 DGN
 SHEET NO. 2
 DATE 96/07/22
 PART NO. SDA-73651-***
 DRWG. NO. ***

THIS DRAWING CONTAINS INFORMATION THAT IS PROPRIETARY TO MOLEX INC. AND SHOULD NOT BE USED WITHOUT WRITTEN PERMISSION.

DIV. DA SIZE B