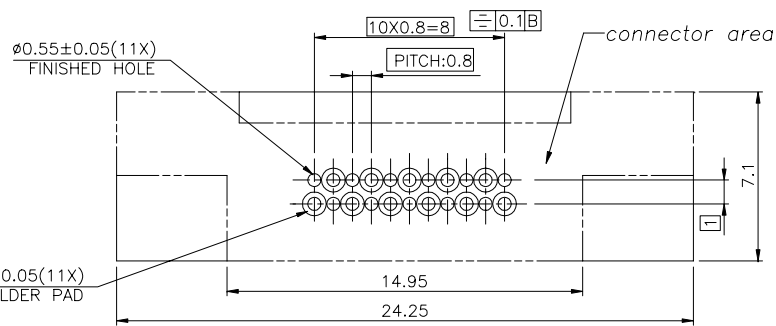
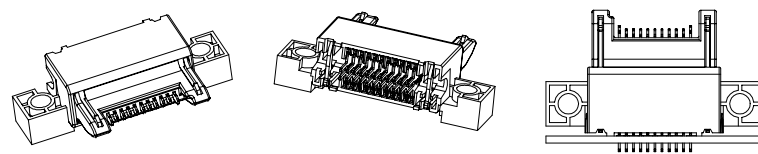
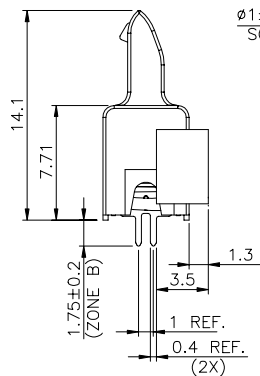
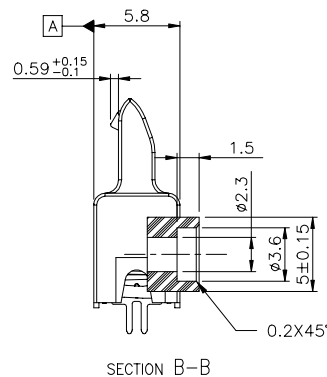
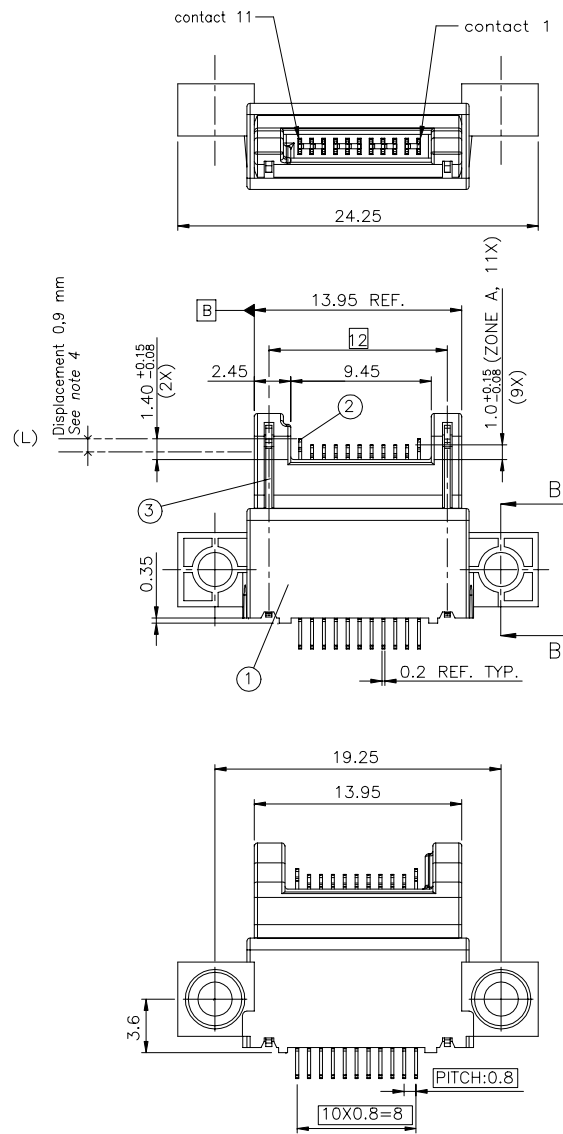


PRODUCT NO.	COLOR
57473-001	BLACK



REQUIRED BOARD LAYOUT SCALE 1.6/1

NOTES :

- MATERIAL
 - 1-1 HOUSING : HIGH TEMP. PLASTIC PBT OR EQUIVALENT UL94V-0
 - 1-2 CONTACT : BERYLLIUM COPPER
 - 1-3 LATCH : SATINLESS STEEL
- FINISH (um : micrometer)
 - 2-1 CONTACT : Ni 1.2 um (50 u") UNDERPLATED ALL OVER
 - ZONE A : 0.76 um (30 u") GXT. 0.08 um (3 u") GOLD FLASH
 - ZONE B : SnPb 2.5 um (100 u"), EXCEPT CUT-OFF EDGES
- PACKAGE
 - 3-1 PACKAGING SPECIFICATION : GS-14-722, PRODUCT TO BE PACKED IN TRAYS
- CONTACT NORMAL FORCE OF TOTAL 11 PINS : 590 gf TO 885 gf AT DISPLACEMENT 0.9 mm FROM L

SECTION A-A
MAX. ANGLE TO ROTATE RECEPTACLE

mat'l. code				tolerances unless otherwise specified		CUSTOMER COPY		<div> </div>			
ltr	ecn no	dr	date	linear	.X ± 0.2	projection		title			
A	T20083	M W	03/18/02		.XX ± 0.1			11P DESKTOP AND HAND FREE KIT			
B	T20172	M W	05/28/02					product family MOBILE I/O			
C	T20286	M W	09/16/02	angles	0° ± 2°			size dwg no			
D	T03-0324	M W	08/07/03	dr	MAGGIE WU 03/18/02	MM		code			
E	T04-0115	M W	03/10/04	enrg	LEIF SHEN 03/18/02			sheet			
				chr	PAUL WANG 03/18/02	scale		57473			
				appd	JOSEPH HSAI 03/18/02	2:1		1 of 2			
sheet index	revision sheet	E	E					cage code			
		1	2					22526			

FCI

All rights strictly reserved. Reproduction or issue to third parties in any form whatever is not permitted without written authority from the proprietor. Property of FCI. Copyright FCI.

Tous droits strictement reserves. Reproduction ou communication a des tiers interdite sous quelque forme que ce soit sans autorisation ecrite du proprietaire. Propriete de c FCI. Droits de reproduction FCI.

