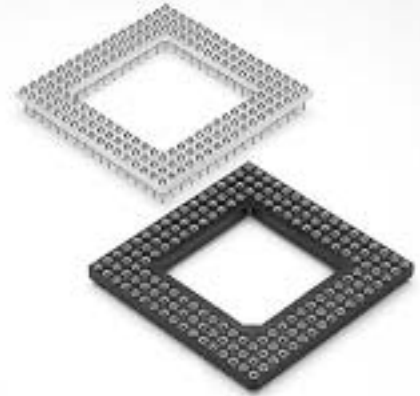
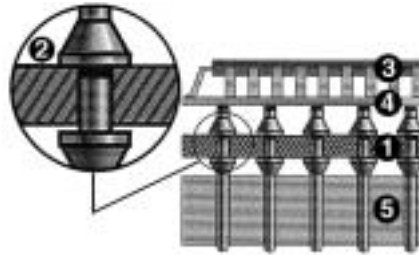


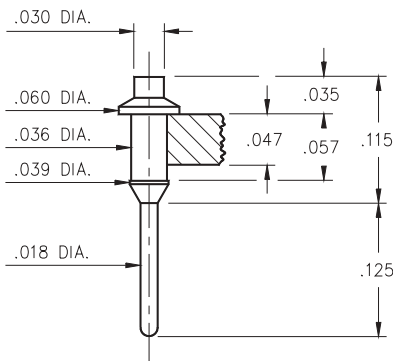
- Series 599 SMT PGA headers and Series 514 SMT PGA sockets are assembled with MM pin# 9976, and receptacle# 1434 respectively. Each floats vertically within the insulator to compensate for uneven solder paste on the PCB. Typical example illustrated.

- 1) "Floating" pin SMT Headers using machined epoxy insulator.
- 2) Detail of "Floating" pins which compensate for unevenly screened solder paste.
- 3) PQFP device
- 4) Translator board
- 5) Existing motherboard



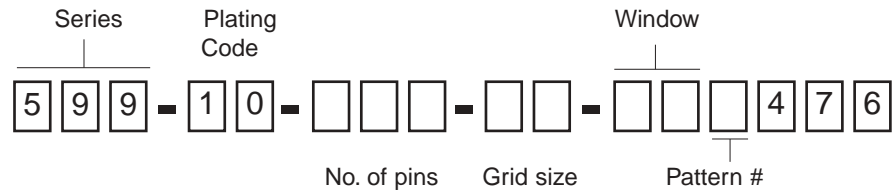
Ordering Information

HEADER TYPE 9976



FOR PGA MALE PIN HEADER

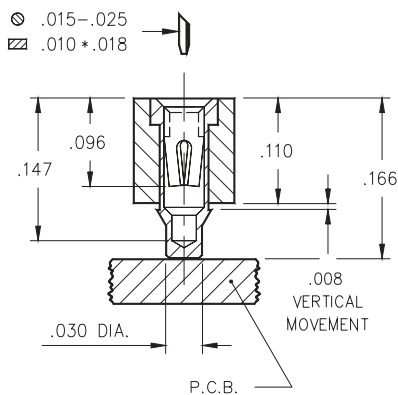
1. Locate footprint pattern from pages 107 to 111, the middle 8 digits of the part number will be located under the pattern.



Determined from footprint pattern pages 107 to 111

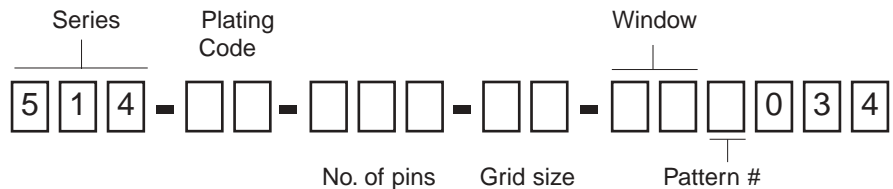
SPECIFY PLATING CODE XX=	10			
Pin Plating	10μ" Au			

SMT RECEPTACLE TYPE 1434



FOR PGA FEMALE SOCKET

1. Specify 2-digit plating code from chart at bottom of page.
2. Locate footprint pattern from pages 107 to 111, the middle 8 digits of the part number will be located under the pattern.



Determined from footprint pattern pages 107 to 111

SPECIFY PLATING CODE XX=		91	93	
Sleeve (Pin)		200μ" Sn/Pb	200μ" Sn/Pb	
Contact (Clip)		10μ" Au	30μ" Au	