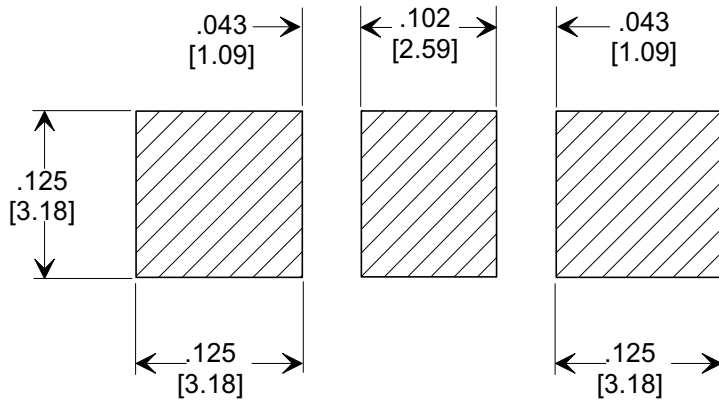
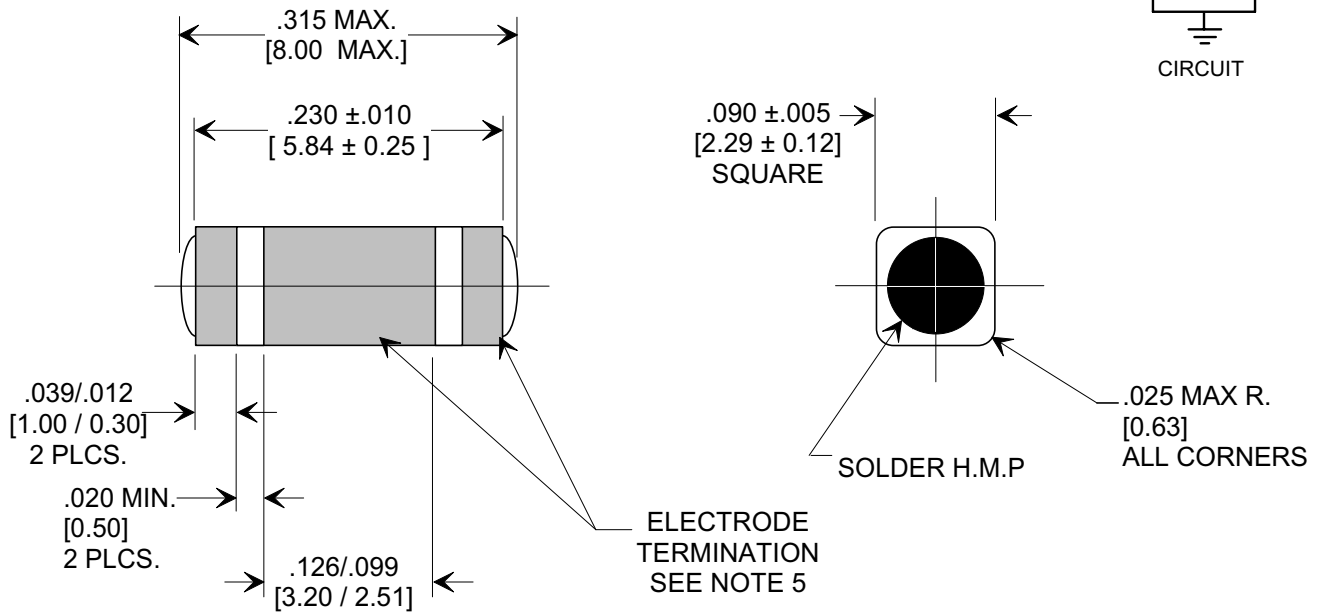
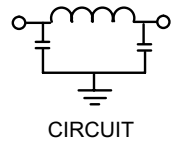
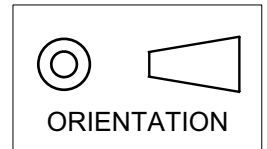


MARKETING SALES DRAWING

DIMENSIONS IN INCHES - DO NOT SCALE THIS DRAWING
DIMENSIONS IN METRIC []

Electrical Testing
per Tusonix standard
test plans and Mil-Std-202
Test Methods.



1. INDUCTANCE TO BE 0.1 H MINIMUM.
2. PACKAGE: BULK OR BLISTER TAPE TO IEC-60286-3 TYPE II AND EIA-481-A.
3. TUSONIX STANDARD PART NUMBER: 4700-006. TUSONIX RoHS COMPLIANT PART NUMBER: 4700-006 LF. CUSTOMER MUST SPECIFY STANDARD OR RoHS PART NUMBER WHEN ORDERING.
4. PART MARKING: STANDARD PART: NO MARKING. RoHS PART: LABELED ON PACKAGING ONLY.
5. ELECTRODE TERMINATION: STANDARD 60/40 SOLDER; RoHS COMPLIANT - MATTE TIN.

| CAP. | TOLERANCE | WVDC | | TEST VOLTAGE | I.R.MIN. @ 100 (VDC.) | IDC | ELECTRODE TERMINATION | TYPICAL NO LOAD INSERTION LOSS dB AT 25°C PER MIL-STD-220 | | |
|--------|-------------|------|--------|--------------|-----------------------|------|-----------------------|---|---------|-------|
| | | 85°C | +125°C | | | | | 10 MHZ | 100 MHZ | 1 GHZ |
| 100 pF | +80% / -20% | 100 | 100 | 300 VDC | 10 G | 10 A | SOLDER | ---- | 3 | 16 |

X-2015 Rev-0

| | | |
|-----------------|---------------|---|
| REVISION RECORD | 0 | Original Release C.O. |
| | 8 | DELETED ITEMS 000, 001, 002 & 007. S.M. 01-16-97 |
| | 8 | 970109-3 |
| | 9 | DIM. .085 ±.005 WAS .083 ±.004. S.M. 07-1598 |
| | 9 | 19980715-8-03 |
| | 10 | ITEM 009 & ORIENTATION SYMBOL ADDED L.E. 06-18-01 |
| | 10 | 20010618-5-01 |
| | 11 | DIM .090 WAS .085. REVISED MOUNTING PAT. ADDED ITEMS FROM 4700-050. S.M. 09-19-01 |
| | 11 | 20010918-3-01 |
| | 12 | REVISED DWG. DRAWING MADE FOR EACH VAR. S.M. 02-13-03 |
| | 12 | 20030213-1-03 |
| | 13 | REVISED DRAWING. S.M. 06-20-03 |
| | 13 | 20030619-2-03 |
| | 14 | NOTES ADDED L.E. 08-09-05 |
| 14 | 20050809-1-02 | |

| | | | |
|--|--------------------|---|-----------------|
| --TOLERANCES-- Unless Otherwise Specified | | Title SURFACE MOUNT SQUARE STYLE PI FILTER | |
| DECIMAL ± .005 [0.13] | Drawn FG 9-9-94 | | Scale 7 X |
| ANGLES ± | Approved NV 9-9-94 | | |
| TUSONIX TUCSON, ARIZONA | | A | 4700-006 |