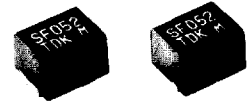
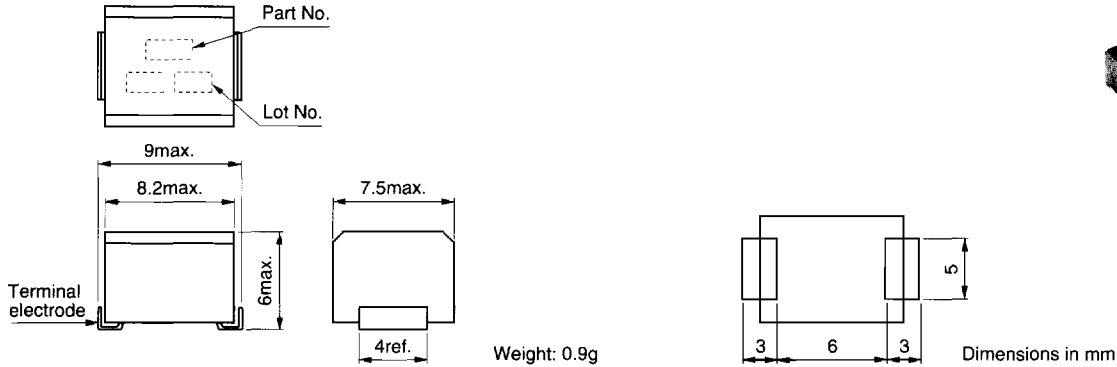


Filters
EMI/EMC
Line choke coil

SMD NORMAL MODE CHOKES

SFM series

SHAPES AND DIMENSIONS/RECOMMENDED PC BOARD PATTERNS



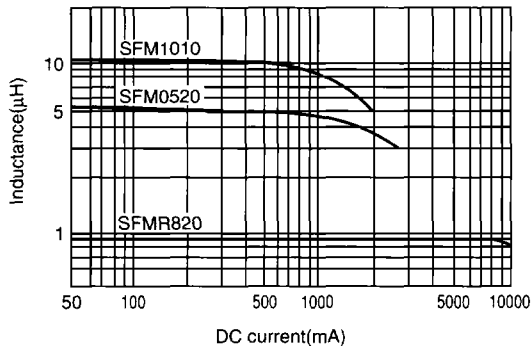
ELECTRICAL CHARACTERISTICS

Part No.	Rated current $I_{dc}(A)$	Inductance(μH)	DC resistance($m\Omega$)max.
SFMR820	2	0.8min.	20
SFM0520	2	5min.	40
SFM1010	1	10 \pm 20%	100

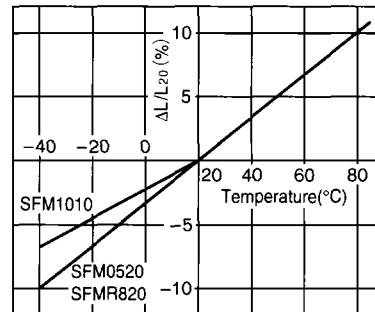
- Test equipment: YHP4261A LCR METER, 1kHz
- Environmental measuring condition: Temperature 20 \pm 15°C, humidity 65 \pm 20%RH
- Operating temperature range: -20 to +85°C
- Packaging style (T: Taping [reel]) If you need the bulk packaging's products, please omit this code.

TYPICAL ELECTRICAL CHARACTERISTICS

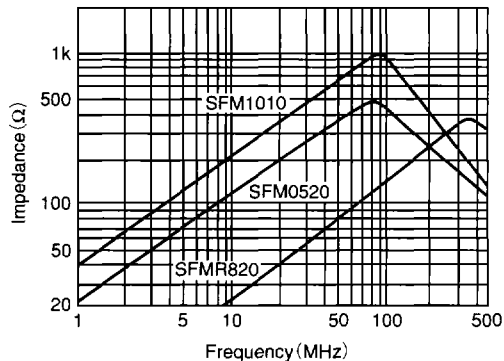
INDUCTANCE vs. DC SUPERPOSITION CHARACTERISTICS



INDUCTANCE CHANGE vs. TEMPERATURE CHARACTERISTICS



IMPEDANCE vs. FREQUENCY CHARACTERISTICS



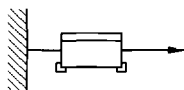
Filters
EMI/EMC
Line choke coil

SMD NORMAL MODE CHOKES

SFM series

RELIABILITY AND TEST CONDITIONS

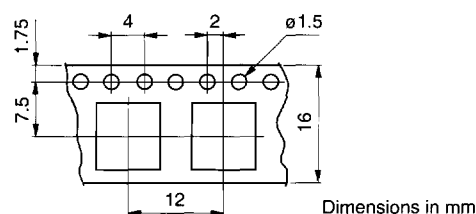
High temperature resistance	Withstands 500 hours exposure to 100±3°C.		
Humidity resistance	Withstands 500 hours exposure to 90 to 95%RH at 40±3°C.		
Thermal shock	Withstands 50 cycles of the following temperature changes. -40°C +20 to +35°C 100°C 30 minutes 15 minutes 30 minutes Normal temperature +20 to +35°C for 15minutes.		
Vibration	Withstands a 10 minutes-sweep from 8 to 200Hz with an amplitude of 2mm or with an acceleration of 24.5m/s² in each of the X, Y and Z axes, for a total duration of 2 hours.		
Tensile terminal strength	An addition of 9.8N for horizontal way.		



PACKAGING STYLES

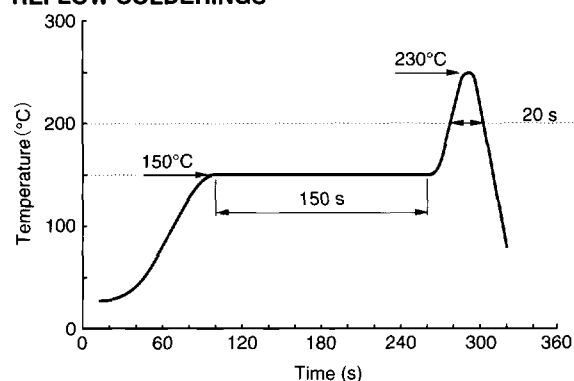
Quantities: 1000pieces/reel

TAPE DIMENSIONS



RECOMMENDED SOLDERING CONDITIONS

REFLOW SOLDERINGS



Specifications which provide more details for the proper and safe use of the described product are available upon request.

All specifications are subject to change without notice.