

Linear Chokes

DLH and DLNP Series, vertical housing

Nominal current:	0.6 - 7 A @ ϑ_a 70°C
Nominal inductance:	20 - 5500 μH /tol. \pm 15%
Max. working voltage:	600 VDC
Application range:	up to 20 kHz
Isolation voltage:	2 kV eff. / wdg.-ambient
Climatic category:	40/125/21 acc. to IEC 60068-1
Plastic case:	UL 94 V-0
Potting resin:	UL 94 V-0

All types of chokes correspond to the international specifications for radio interference chokes (EN 138100).

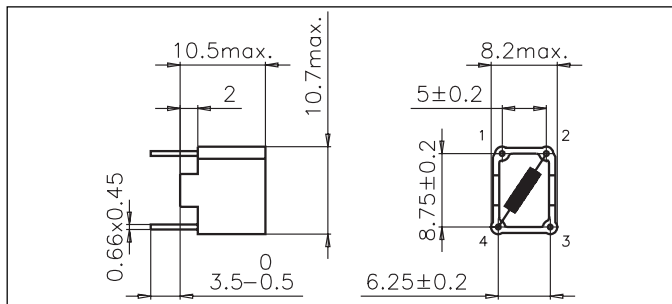
This range of chokes enables vertical mounting, thus reducing the area of the PC board used. Finest quality core materials allow the highest electrical performance with minimum component volume. Good design with easy assembly allows good cost/performance ratio. This type of choke is essential in the field of power electronics, e.g. switching power supplies, chopper amplifiers, DC drives and stepper motor controls.

Technical Data

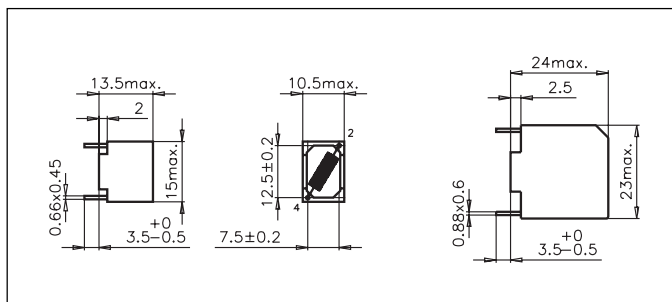
Type	I_N (1) [A]	L_N (2) [μ H]	R_{cu} (3) [m Ω]	$\sim f_{Res}$ [MHz]	Case
DLNP-6148-D6D1	0.6	100	600	9	48-1
DLNP-6148-01C5	1.0	50	280	15	48-1
DLH1-14-0.6-500/a	0.6	500	750	1.6	01-1
DLH1-14-1.0-200/a	1.0	200	220	6	01-1
DLH1-14-2.0-50/a	2.0	50	50	9	01-1
DLH1-22-0.45-5000/a	0.45	5000	2600	0.2	09-1
DLH1-22-0.6-3000/a	0.6	3000	1550	0.3	09-1
DLH1-22-1.5-500/a	1.5	500	280	1	09-1
DLH1-22-1.8-300/a	1.8	300	180	1.5	09-1
DLH1-22-3.0-100/a	3.0	100	70	4	09-1
DLH1-22-4.5-50/a	4.5	50	30	6	09-1
DLH1-22-7.0-20/a	7.0	20	12	15	09-1
DLH1-31-0.6-5500/a	0.6	5500	3600	0.2	19-1
DLH1-31-1.6-800/a	1.6	800	470	1.5	19-1
DLH1-31-2.5-300/a	2.5	300	160	3	19-1
DLH1-31-4.0-130/a	4.0	130	53	6	19-1
DLH1-31-6.3-50/a	6.3	50	23	9.5	19-1

- (1) @ ϑ_a 70°C; current derating over 70°C: $I = I_N \times \sqrt{(125 - \vartheta_a)/55}$
- (2) Nominal inductance measured according to EN 138100, see introduction of this catalog, paragraph 3.4
- (3) Resistance @ ϑ_a 25°C

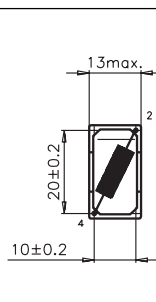
Case 48-1



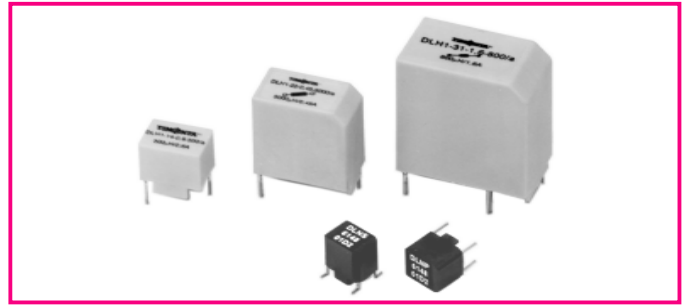
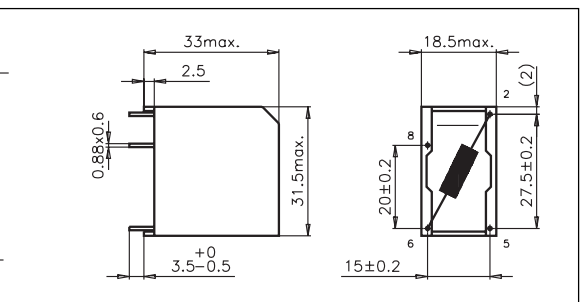
Case 01-1



09-1



19-1



DLH Linear chokes are mainly used as smoothing or RFI suppression circuits.
DLNP

Environmental Rating:

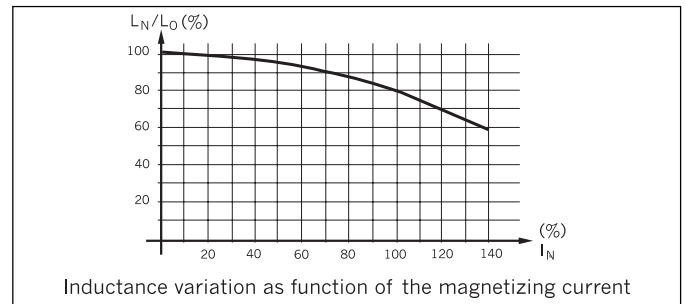
The **DLH and DLNP chokes** can only be used with direct current or with low frequency alternating current (max. 400 Hz) and up to max. $1.1 \cdot I_N$. They operate only as attenuation devices for HF-interference with reduced amplitude ($dI \ll I_N$) up to the range of their self-resonance ($\sim f_{Res}$).

SMD-version upon request.

Also available in open version (DLO1).

Mountings for chokes in open version see page 23.

Typical curves



Application

