

MATERIAL AND FINISH

Insulator: ABS, UL94-HB rated.
 Earth terminal: Steel, Nickel plated
 Tip terminal: Bronze, Silver Plated

MECHANICAL SPECIFICATIONS:

Insertion force: 3kg max.
 Extraction force: 0.1kg-3kg
 Unloaded life test: 5000 cycles @ 40 cycles per minute
 Loaded life test: 3000 cycles @ 18 cycles per minute

ELECTRICAL SPECIFICATIONS:

Current rating: 0.5A @ 30VDC
 Contact resistance: 30 mohm max.
 Insulation resistance: 100 Mohm min. at 500 VDC
 Dielectric withstanding voltage: 500VAC for 1 minute

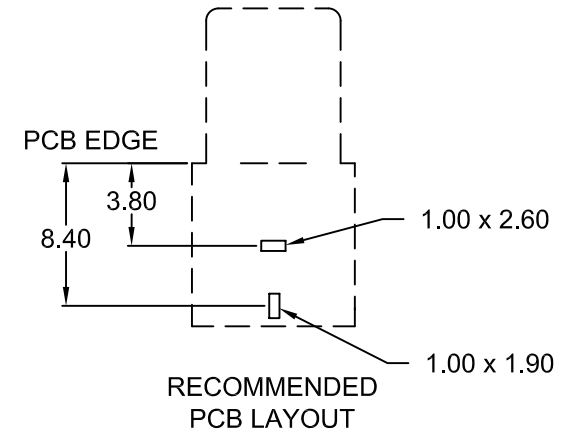
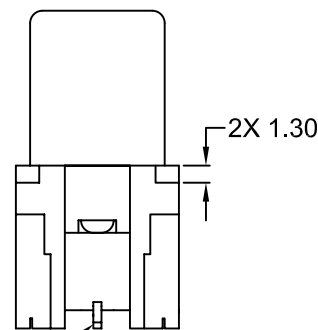
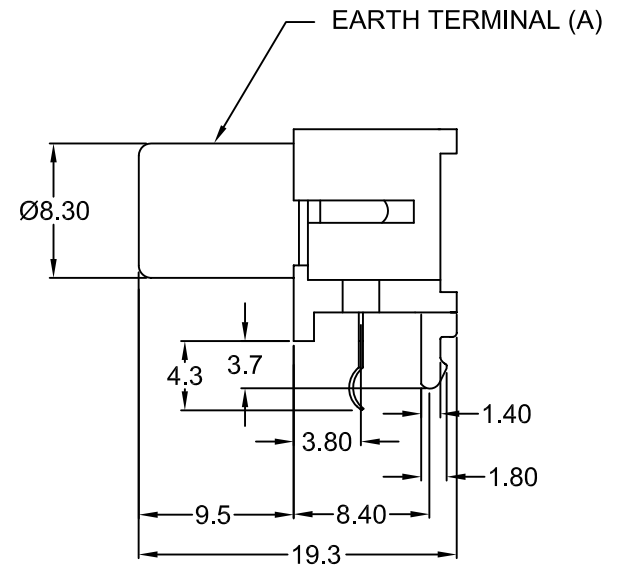
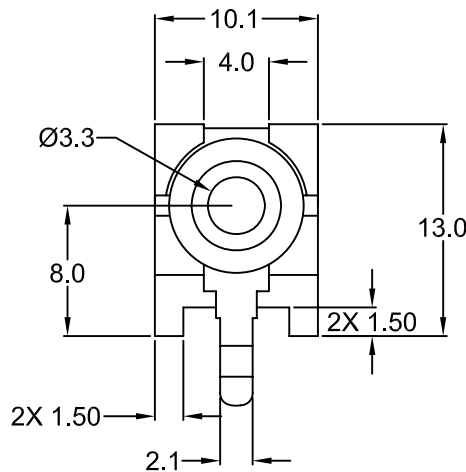
SOLDERABILITY:

Heat Distortion Temp: 190°C

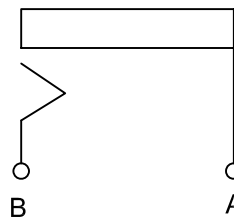
ENVIRONMENTAL:

Operating Temperature: -10°C to +60°C

RoHS
COMPLIANT



TIP TERMINAL (B)



SCHMATIC

"X"	COLOR
B	BLACK
R	RED
W	WHITE
Y	YELLOW

TOLERANCE UNLESS OTHERWISE SPECIFIED	
X	± 1
X.X	± 0.4
X.XX	± 0.20

DRAWN BY	LFH	DATE:	8/13/98
CHECK BY	AH	DATE:	8/13/98
APPR BY	SS	DATE:	8/13/98

Power Dynamics, Inc.
 Phone: 973 560-0019 Whippany, New Jersey Fax: 973 560-0076

PART: RIGHT ANGLE, RCA JACK
 P.C. MOUNT TYPE

PART #: **RCA-011X**

SIZE: A
 SCALE: NTS

ALL DIMENSIONS FOR REFERENCE ONLY
 DIMENSIONS ARE IN MILLIMETERS

SHEET 1 of 1
 REV: D

REVISIONS		CHANGE	CHK	CHK	APPR
REV	DATE	REVISED SPECS	LFH	SS	
A	8/13/98	REVISED SPECS	LFH	SS	
B	8/15/00	UPD. DWG. ADD TAB DIM	TD	JJ	
C	10/11/01	REVISED SPECS.	PB	TD	
D	8/10/07	CHNG. SOLDERABILITY SPEC.	PB	PB	

6

5

4

3

2

1

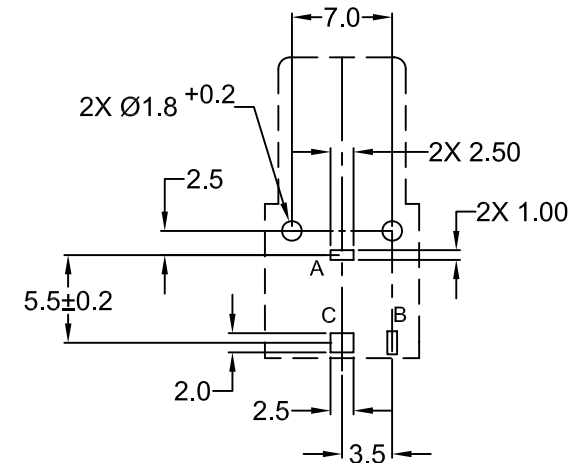
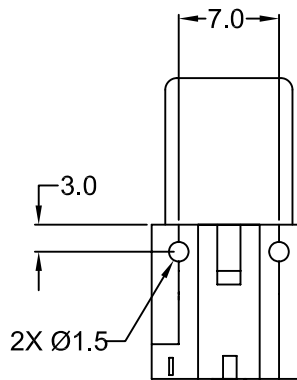
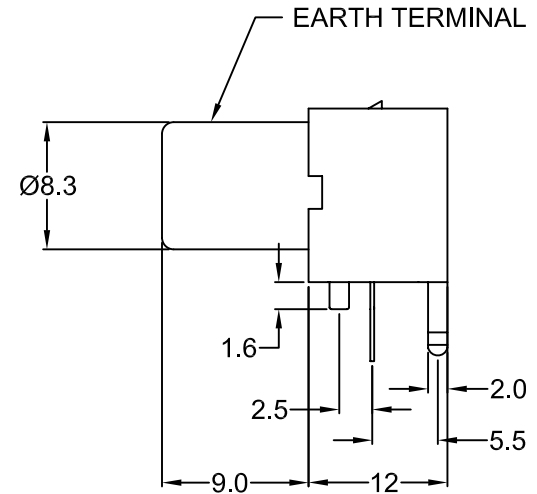
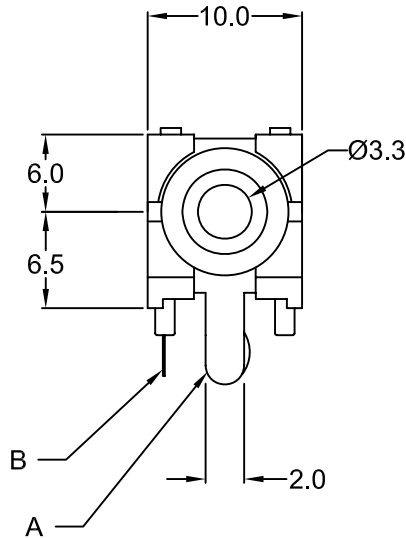
MATERIAL AND FINISH:
 Housing: ABS, UL94-HB Rated
 Earth Terminal: Steel, Nickel Plated
 Tip Terminal: Bronze, Silver Plated
 Shunt Terminal: Brass, Silver Plated

MECHANICAL SPECIFICATIONS:
 Insertion Force: 0.5 Kg to 2 Kg
 Extraction Force: 0.4 Kg to 2 Kg

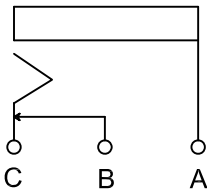
ELECTRICAL SPECIFICATIONS:
 Rated Current: 1A
 Insulation Resistance: 100 Mohm min. at 500VDC
 Dielectric Withstanding Voltage: 2000VAC for one minute
 Initial Contact Resistance: 30 mohm max. at 1 KH

SOLDERABILITY:
 Heat distortion temperature: 190°C

ENVIRONMENTAL SPECIFICATIONS:
 Operating Temperature: -40°C TO +88°C



**RECOMMENDED
 PCB LAYOUT
 (TOP VIEW)**



SCHEMATIC

REV	DATE	CHANGE	CHNG. CHECK		APPR	
			LFH	TD	SS	SS
A	8/17/98	REVISED SPECS.	TD	TD	SS	SS
B	2/2/99	ADD TOLERANCE	PB	TD		
C	1/22/01	UPDATED DRAWING	PB	TD		
D	9/10/07	CHNG. SOLDERABILITY SPEC.	PB	TD		

**RoHS
 COMPLIANT**

P/N	COLOR
RCA-021B	BLACK
RCA-021R	RED
RCA-021W	WHITE
RCA-021Y	YELLOW

TOLERANCE UNLESS OTHERWISE SPECIFIED	
X	± 1
X.X	± 0.4
X.XX	± 0.20

DRAWN BY	AH	DATE:	8/14/98
CHECK BY	TD	DATE:	2/2/99
APPR BY	SS	DATE:	2/2/99

Power Dynamics, Inc.
 Phone: 973 560-0019 Whippany, New Jersey Fax: 973 560-0076

PART: RCA JACK; R/A; 3 TERMINAL
 PCB MOUNT

RCA-021X

PART #: **RCA-021X** SHEET 1 of 1

SIZE: A ALL DIMENSIONS FOR REFERENCE ONLY
 SCALE: NTS DIMENSIONS ARE IN MILLIMETERS REV: D

6

5

4

3

2

1

6

5

4

3

2

1

MATERIAL AND FINISH:

Insulator: ABS, UL 94V-HB rated, color (see ordering code)
Leaf terminal: Phosphor Bronze, Silver plated
Ground terminal: Bronze, Nickel plated
Tip terminal: Bronze, Silver plated

MECHANICAL SPECIFICATIONS:

Insertion force: 3.0kg max.
Withdrawal force: 0.1 - 3.0kg
Durability: 5000 cycles @ 40 cycles / minute

ELECTRICAL SPECIFICATIONS:

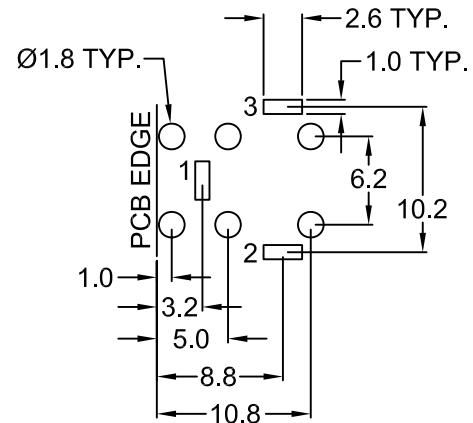
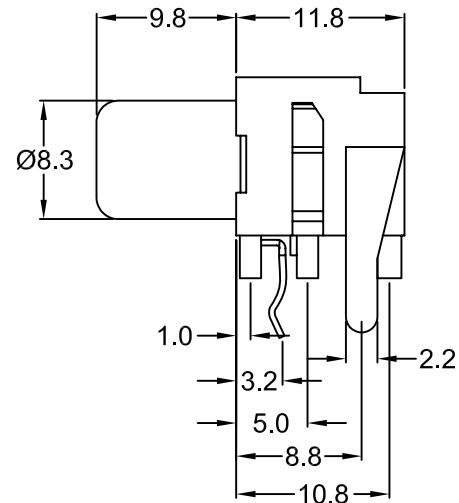
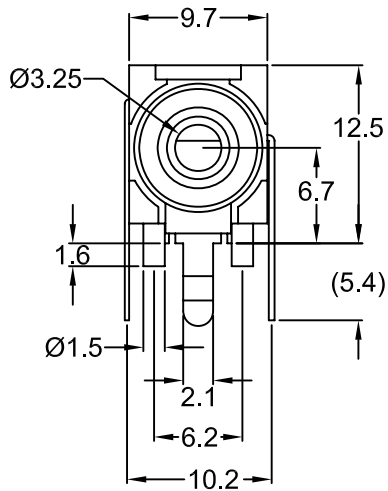
Rated current: 0.5A
Rated Voltage: 30VDC
Insulation resistance: 100 Mohm min. @ 500VDC
Dielectric withstanding voltage: 500VAC for one minute
Contact resistance: 30 mohm max.

SOLDERABILITY:

Heat distortion temperature: 190°C

ENVIRONMENTAL:

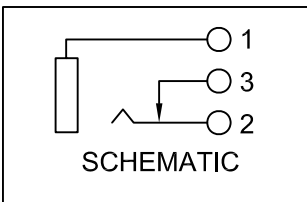
Operating temperature: -10°C ~ +60°C



RECOMMENDED PCB LAYOUT (TOP VIEW)

RoHS COMPLIANT

REV	DATE	CHNG	CHK	APPR
	A	8/24/98	LFH	PB
	B	10/25/02	TD	PB
	C	9/10/07	PB	PB
CHNG. SOLDERABILITY SPEC.				



P/N	COLOR
RCA-031B	BLACK
RCA-031R	RED
RCA-031W	WHITE
RCA-031Y	YELLOW

TOLERANCE UNLESS OTHERWISE SPECIFIED	
X	± 1
X.X	± 0.4
X.XX	± 0.20
DRAWN BY	LFH
DATE:	6/24/98
CHECK BY	PB
DATE:	10/25/02
APPR BY	
DATE:	

Power Dynamics, Inc.
Phone: 973 560-0019 Whippany, New Jersey Fax: 973 560-0076

PART: RCA JACK; RIGHT ANGLE PCB MOUNT

PART #: **RCA-031X** SHEET 1 of 1

SIZE: A SCALE: NTS ALL DIMENSIONS FOR REFERENCE ONLY DIMENSIONS ARE IN MILLIMETERS REV: C

6

5

4

3

2

1

6

5

4

3

2

1

MATERIAL AND FINISH:

Insulator: ABS, UL94 HB rated

Contacts:

A: Steel nickel plated

B: Bronze, silver plated

C: Phosphor Bronze, silver plated

MECHANICAL SPECIFICATIONS:

Insertion force: 3 Kg max

Withdrawal force: 0.1 Kg to 3 Kg

Durability: 5000 cycles @ 40cycles/min max.

ELECTRICAL SPECIFICATIONS:

Voltage rating: 30VDC & 0.5A

Insulation resistance: 100 Mohm min. at 500 VDC

Dielectric withstanding voltage: 500 VAC for 1 minute

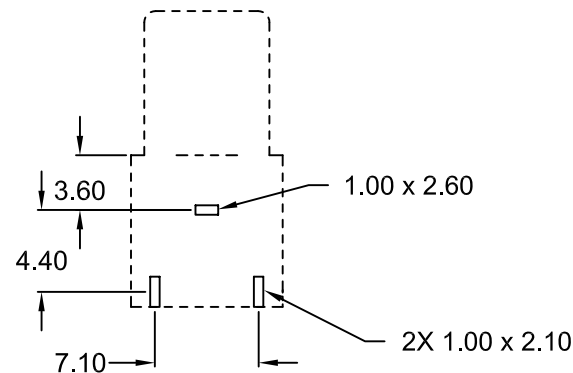
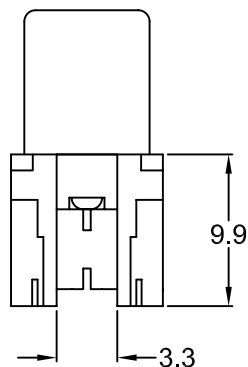
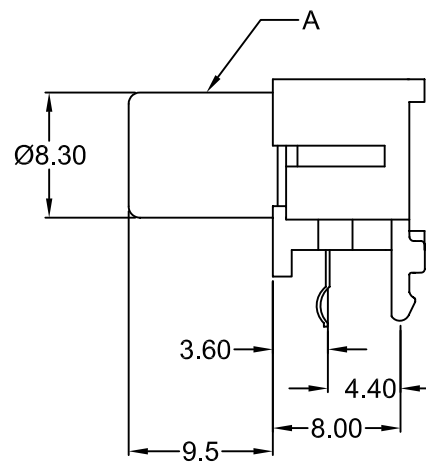
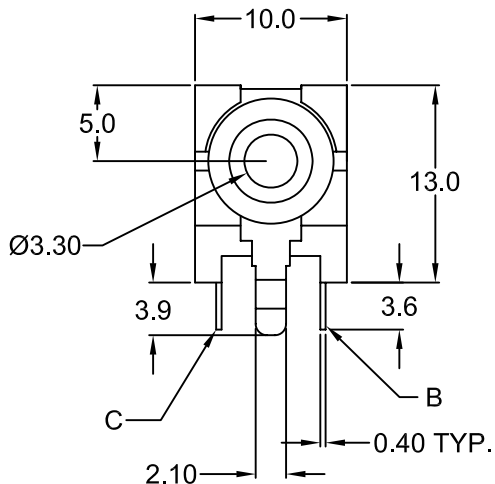
Contact resistance: 30 milliohm max.

SOLDERABILITY:

Heat distortion temperature: 190°C

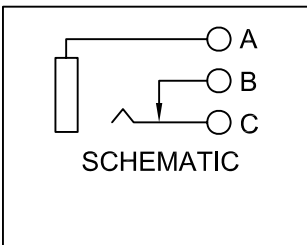
ENVIRONMENTAL:

Operating temperature: -10°C TO +60°C



RoHS COMPLIANT

REV	DATE	CHANGE	CHNG		CHK		APPR	
			LH	SS	TD	PB	TD	PB
A	8/98	REVISED SPEC						
B	1/00	REVISED DWG						
C	5/1/01	REVISED DWG						
D	9/10/07	CHNG. SOLDERABILITY SPEC.						



P/N	COLOR
RCA-041B	BLACK
RCA-041R	RED
RCA-041W	WHITE
RCA-041Y	YELLOW
RCA-041O	ORANGE

TOLERANCE UNLESS OTHERWISE SPECIFIED	
X	± 1
X.X	± 0.4
X.XX	± 0.20

DRAWN BY	LH	DATE:	8/17/00
CHECK BY	AH	DATE:	10/29/98
APPR BY	SS	DATE:	10/29/98

Power Dynamics, Inc.
 Phone: 973 560-0019 Whippany, New Jersey Fax: 973 560-0076

PART: RCA JACK; RIGHT ANGLE PCB THRU-HOLE

RCA-041X

PART #: **RCA-041X** SHEET 1 of 1

SIZE: A ALL DIMENSIONS FOR REFERENCE ONLY DIMENSIONS ARE IN MILLIMETERS REV: D

SCALE: NTS

6

5

4

3

2

1

A

A

6

5

4

3

2

1

MATERIAL AND FINISH :

Housing: Iron, Nickel plating
Contacts earth terminal: Bronze, Nickel plating
Tip terminal: Bronze, Nickel plating

MECHANICAL SPECIFICATIONS:

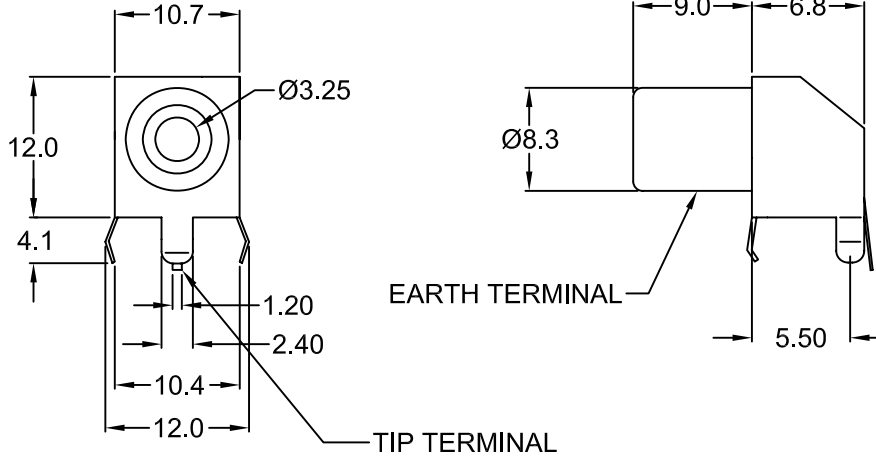
Insertion force: 3.0kg max.
Extraction force: 0.1kg to 3.0kg

ELECTRICAL SPECIFICATIONS:

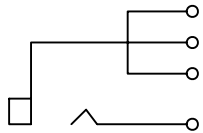
Current rating: 0.5A - 2A
Voltage rating: 40VDC
Insulation resistance: 100 Megaohm min. at 500 VDC
Dielectric withstanding strength: 500 VAC for 1 minute
Contact resistance: 30 milliohm max.

ENVIRONMENTAL:

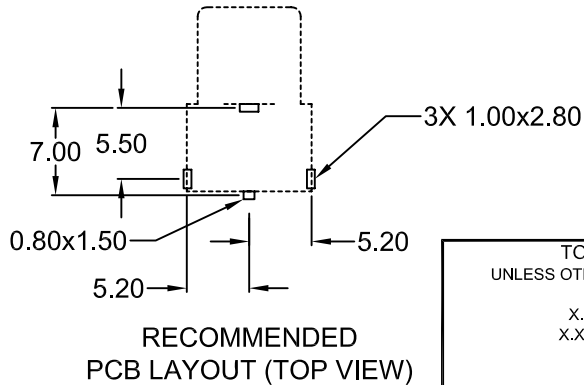
Operating temperature: -65°C to +120°C
Soldering temperature: 180°C for 7 seconds



**RoHS
COMPLIANT**



SCHEMATIC



RECOMMENDED
PCB LAYOUT (TOP VIEW)

P/N	COLOR
RCA-061B	BLACK
RCA-061R	RED
RCA-061W	WHITE
RCA-061Y	YELLOW

REV	DATE	CHANGE	CHKG		CHK		APPR	
			AH	TD	JJ	SS		
A	12/98	ADDED SOLDER TEMP.						
B	4/25/00	REVISED & UPDATED						

REVISIONS

TOLERANCE UNLESS OTHERWISE SPECIFIED	
X	± 1
X.X	± 0.4
X.XX	± 0.20

DRAWN BY	LFH	DATE:	8/25/98
CHECK BY	AH	DATE:	12/17/98
APPR BY	SS	DATE:	12/17/98

Power Dynamics, Inc.
Phone: 973 560-0019 Whippany, New Jersey Fax: 973 560-0076

PART: RIGHT ANGLE RCA JACK
PCB MOUNT TYPE

PART #: RCA-061X		SHEET 1 of 1
SIZE: A	ALL DIMENSIONS FOR REFERENCE ONLY DIMENSIONS ARE IN MILLIMETERS	REV: B
SCALE: NTS		

6

5

4

3

2

1

6

5

4

3

2

1

MATERIAL AND FINISH:

Insulator: ABS, UL94-HB rated.
Earth terminal (barrel): Steel, Nickel plated
Tip terminal: Bronze, Silver plated

MECHANICAL SPECIFICATIONS:

Insertion force: 3kg max.
Extraction force: 0.1kg ~ 3kg

ELECTRICAL SPECIFICATIONS:

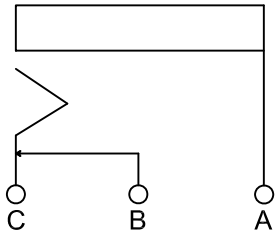
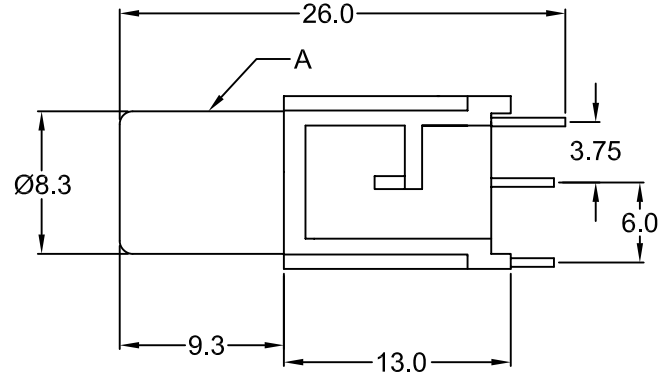
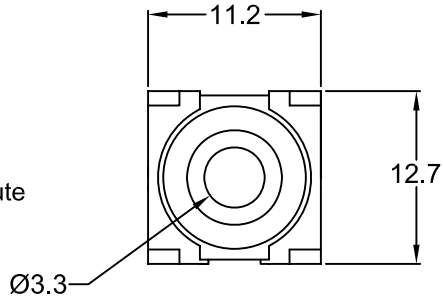
Insulator resistance: 100 Mohm min. at 500 VDC
Dielectric withstanding voltage: 500VAC for 1 minute
Initial contact resistance: 30 mohm max. at 1 KHz
Current rating: 0.5A @ 30VDC

SOLDERABILITY:

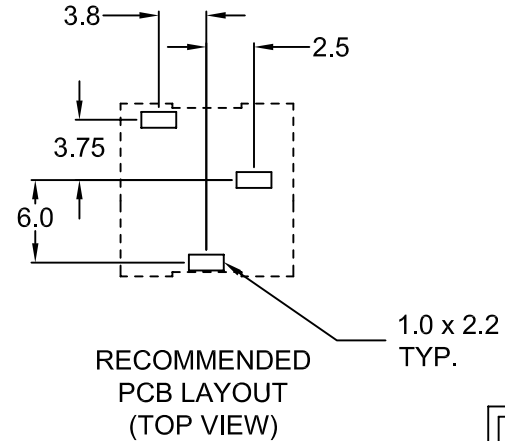
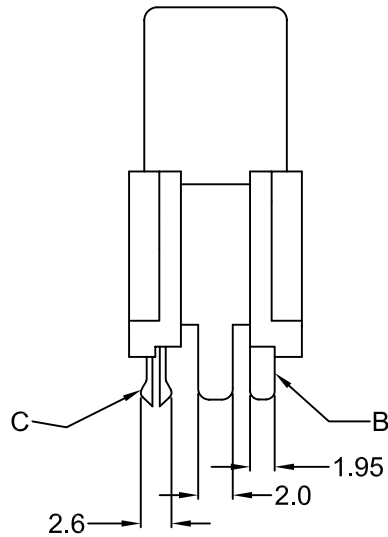
Heat distortion temperature: 190°C

ENVIRONMENTAL:

Operating temperature: -40°C to +88°C



SCHEMATIC



RECOMMENDED PCB LAYOUT (TOP VIEW)

RoHS COMPLIANT

REVISIONS

REV	DATE	CHANGE	CHNG	CHK	APPR
A	12/19/00	UPDATED DRAWING	JU	TD	SS
B	9/10/07	CHNG. SOLDERABILITY SPEC.	PB		

P/N	COLOR
RCA-151B	BLACK
RCA-151R	RED
RCA-151W	WHITE
RCA-151Y	YELLOW

TOLERANCE UNLESS OTHERWISE SPECIFIED	
X	± 1
X.X	± 0.4
X.XX	± 0.20
DRAWN BY	SLS
DATE:	8/16/95
CHECK BY	AH
DATE:	11/12/98
APPR BY	LH
DATE:	11/12/98

Power Dynamics, Inc.

Phone: 973 560-0019 Whippany, New Jersey Fax: 973 560-0076

PART: RCA JACK, VERTICAL PCB MOUNT

PART #: RCA-151X		SHEET 1 of 1
SIZE: A	ALL DIMENSIONS FOR REFERENCE ONLY DIMENSIONS ARE IN MILLIMETERS	REV: B
SCALE: NTS		

6

5

4

3

2

1