

EMI Suppression Chokes

Current-compensated ring core double chokes for power lines

With ferrite core, potted in plastic case
Case and potting flame-retardant as per UL 94 V-0

Rated inductance 0,4 ... 82 mH

Rated voltage 250 Vac

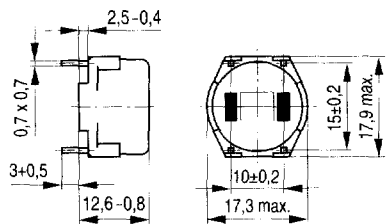
Rated current 0,3 ... 10 A

IEC climatic category 40/125/56

Approvals

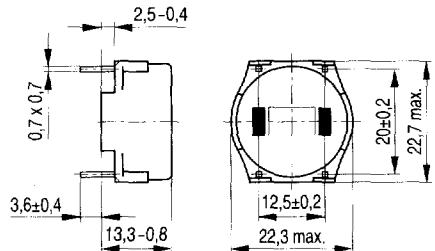


B82721-A, horizontal version



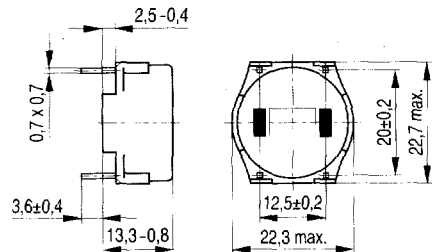
SBS0961-Z

B82721-K, vertical version



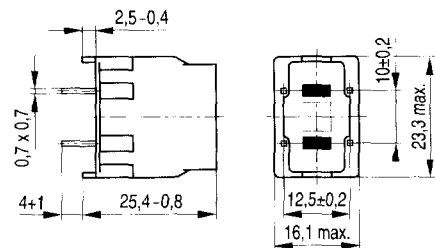
SBS0962-B

B82722-A, horizontal version



SBS0962-B

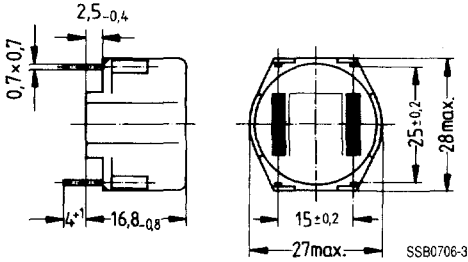
B82722-J, vertical version



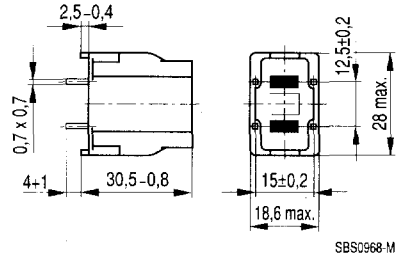
SBS0964-P

EMI Suppression Chokes

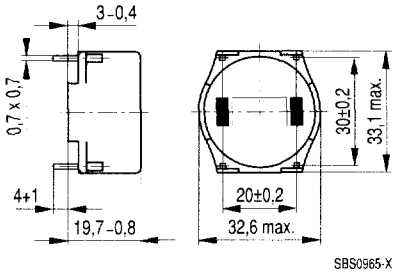
B82723-A, horizontal version



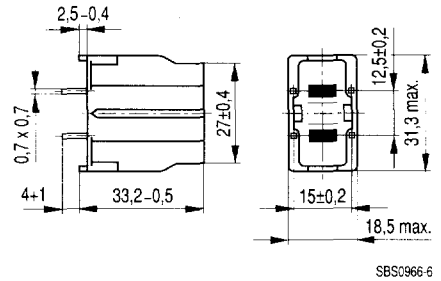
B82723-J, vertical version



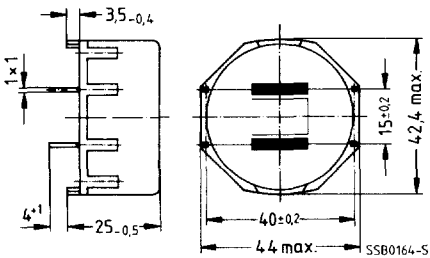
B82724-A, horizontal version



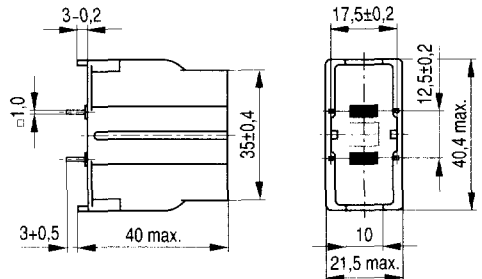
B82724-J, vertical version



B82725-A, horizontal version



B82725-J, vertical version





EMI Suppression Chokes

I_R per winding A	L_R per winding mH	R_{typ} per winding m Ω	Ordering code	Min. qty.	Max. qty.						
B82721											
0,4	39	2000	B82721-K2401-N20	60	2160						
0,4	27	1700	B82721-K2401-N21	60	2160						
0,5	18	1500	B82721-K2501-N1	60	2160						
0,7	10	600	B82721-K2701-N20	60	2160						
1,2	6,8	280	B82721-K2122-N20	60	2160						
1,5	3,3	180	B82721-K2152-N1	60	2160						
2,0	1,0	90	B82721-K2202-N1	60	2160						
3,6	0,4	35	B82721-K2362-N1	60	2160						
0,4	39	2000	B82721-A2401-N20	50	1800						
0,4	27	1700	B82721-A2401-N21	50	1800						
1,2	6,8	280	B82721-A2122-N20	50	1800						
3,6	0,4	35	B82721-A2362-N1	50	1800						
B82722											
0,3	47	2500	B82722-A2301-N1	60	1800						
0,5	27	1200	B82722-A2501-N1	60	1800						
1	10	480	B82722-A2102-N1	60	1800						
2	2,2	130	B82722-A2202-N1	60	1800						
3	1,2	56	B82722-A2302-N1	60	1800						
0,3	47	2500	B82722-J2301-N1	45	1620						
0,5	27	1200	B82722-J2501-N1	45	1620						
1	10	480	B82722-J2102-N1	45	1620						
2	2,2	130	B82722-J2202-N1	45	1620						
3	1,2	56	B82722-J2302-N1	45	1620						
B82723											
1	27	750	B82723-A2102-N1	40	1600						
2	5,6	160	B82723-A2202-N1	40	1600						
4	2,7	60	B82723-A2402-N1	40	1600						
1	27	750	B82723-J2102-N1	40	1600						
2	5,6	160	B82723-J2202-N1	40	1600						
4	2,7	60	B82723-J2402-N1	40	1600						

EMI Suppression Chokes

I_R per winding A	L_R per winding mH	R_{typ} per winding m Ω	Ordering code	Min. qty.	Max. qty.					
B82724										
6	1,8	31	B82724-A2602-N20	30	900					
1	33	810	B82724-J2102-N1	30	1920					
1,4	27	500	B82724-J2142-N1	30	1920					
2	6,8	190	B82724-J2202-N1	30	1920					
4	3,3	66	B82724-J2402-N1	30	1920					
B82725										
4	6,8	87	B82725-A2402-N1	40	800					
6	3,9	41	B82725-A2602-N1	40	800					
8	2,7	22	B82725-A2802-N1	40	800					
10	1,8	14	B82725-A2103-N1	40	800					
4	6,8	77	B82725-J2402-N20	40	160					
6	3,9	34	B82725-J2602-N20	40	160					
8	2,7	20	B82725-J2802-N20	40	160					
▽ 10	1,8	13	B82725-J2103-N22	40	160					