

SERIES 72 R

.375" PCB Barrier Terminal Strip (closed side)

Description

The series 72R PCB terminal strip brings the benefits of tri-barrier construction to our most popular series. Unlike other tri-barrier designs, the 72R has the same footprint as our standard series 72 PCB terminal strip, allowing the user to offer the benefits of the tri-barrier construction without redesigning their PCB or enclosure.

The product can be configured from 15 to 25 amps and 150 to 300 volts. The 72R has our broadest selection of screws, terminals, hardware, and mounting options.

Made in the USA, all Beau terminal blocks embody the highest quality standards in the industry—using the finest materials and world class manufacturing processes. They meet or exceed all applicable industry standards.

Features

- **Robust and durable.** 72R series screw terminals are ultrasonically welded into the thermoplastic insulator, eliminating terminal twisting and solder joint failure.
- **Molded to exact length,** with no ugly saw cuts, Beau terminal strips make your products look more professional.
- **Wide variety of options.** Our broad range of screw, terminal, hardware and mounting options allows us to save you assembly costs and improve interconnect performance.
- **Prevents shorting.** The tri-barrier construction surrounds the connection on three sides providing maximum circuit isolation.



PRODUCT RATINGS

#6-32 BINDING HEAD SCREW

UL	Class B	15 Amps @ 300 V 14 AWG
	Class C	15 Amps @ 150 V 14 AWG
CSA	Class B	20 Amps @ 300 V 14 AWG
	Class C	20 Amps @ 300 V 14 AWG

#6-32 WIRE CLAMP SCREW

UL	Class B	20 Amps @ 300 V 12 AWG
	Class C	20 Amps @ 150 V 12 AWG
CSA	Class B	25 Amps @ 300 V 12 AWG
	Class C	25 Amps @ 300 V 12 AWG

NRTL/C

Class B	25 Amps @ 300 V 12 AWG
Class C	25 Amps @ 300 V 12 AWG

NOTE: 3.5M screws carry #6-32 screw ratings.

APPROVALS

UL	File No. E48521 Guide No. XCFR2
CSA	File No. 025562

TECHNICAL SPECIFICATIONS

ELECTRICAL

DWV	10500 VDC
IR	>5000 Megohms

MECHANICAL

Tightening torque	12 in.-lbs.
Maximum torque	13 in.-lbs.
Wire strip length	5/16"
Wire range	12 to 24 AWG

ENVIRONMENTAL

Continuous Use Temp	
RTI electrical	110°C
RTI mechanical w/o impact	110°C

MATERIALS

Insulator	Thermoplastic, UL94V-0, black
Terminal	Brass, tin-lead plate
Screws	#6-32, phillips/slotted, steel, zinc chromate plate

OPTIONS

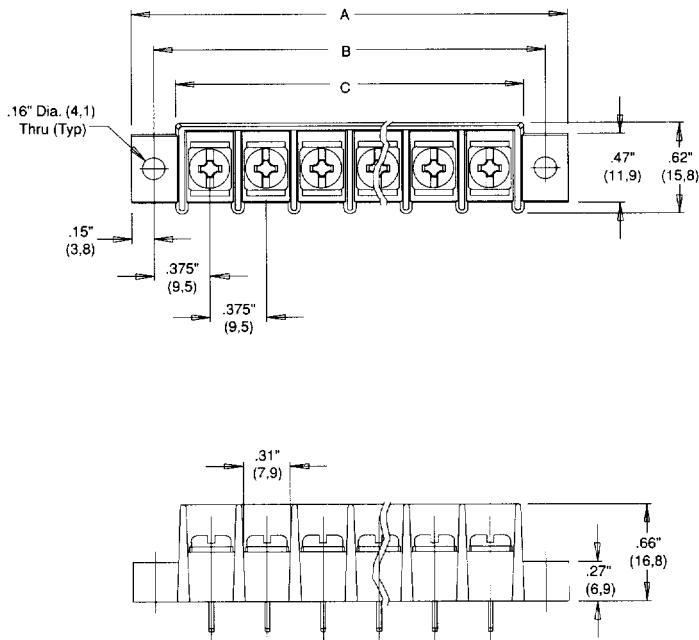
-45	Slotted screw
-47	Screws up, wire ready
-49	Brass, phillips/slotted screw
-45-56	Stainless steel screw, slotted
-50	Clamp washer, phillips/slotted screw
-58	No screws, barrier only
-59	Screws supplied unassembled
-C	No mounting ends
-E	Solid mounting ends
-F	Rap-attach mounts
-H	Hinged cover
-M	3.5 M screw, slotted
-P	.040" standoff pads
-V	130°C insulator

HOW TO ORDER

7	2	R	X	X	X	X	X
SERIES	TERMINAL STYLE	NO. OF POLES	OPTIONS				
	1 2 3	2 to 16	(Dash #s above and opposite page)				
	5 6 7						
	8 9						

*Consult factory for combinations of screw options.

SERIES 72 R



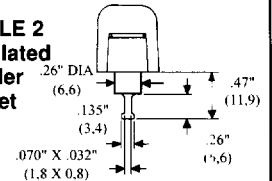
No. of Circuits	A		B		C	
	in.	mm	in.	mm	in.	mm
2	1.58	78.3	1.13	28.6	.83	21.1
3	1.96	49.7	1.50	38.1	1.21	30.7
4	2.33	59.2	1.88	47.6	1.58	40.2
5	2.71	68.8	2.25	57.2	1.96	49.7
6	3.08	78.3	2.63	66.7	2.33	59.2
7	3.46	87.8	3.00	76.2	2.71	68.8
8	3.83	97.3	3.38	85.7	3.08	78.3
9	4.21	107	3.75	95.3	3.46	87.8
10	4.58	116	4.13	105	3.83	97.3
11	4.96	126	4.50	114	4.21	107
12	5.33	135	4.88	124	4.58	116
13	5.71	145	5.25	133	4.96	126
14	6.08	154	5.63	143	5.33	135
15	6.46	164	6.00	152	5.71	145
16	6.83	174	6.38	162	6.08	154

TERMINAL STYLES

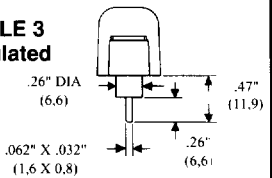
STYLE 1
No PC
Terminal



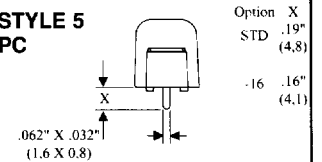
STYLE 2
Insulated
Solder
Turret



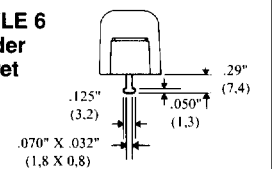
STYLE 3
Insulated
PC



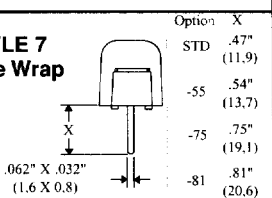
STYLE 5
PC



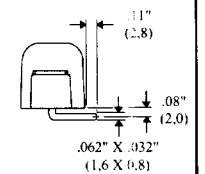
STYLE 6
Solder
Turret



STYLE 7
Wire Wrap



STYLE 8
Right
Angle PC



STYLE 9
Insulated
Quick
Connect

