

| TABLE 1 | | | | |
|---------|-----------|--------------|------------------------|--------------|
| DASH NO | CONN TYPE | IMPED (OHMS) | MATERIAL $\triangle 3$ | ASSEMBLE PER |
| -1 | PL220 | 50 | 1-0442-020 | TAI-A118 |
| -2 | CJ220 | | 1-0443-020 | |
| -3 | PL240 | | 1-0446-020 | |
| -4 | CJ240 | | 1-0445-020 | |
| -5 | BJ226 | | 1-0472-020 | TAI-123 |
| -6 | BJ229 | | 1-0473-020 | |
| -7 | BJ246 | | 1-0046-020 | |
| -8 | BJ249 | | 1-0047-020 | |
| -9 | UPL220 | 75 | 1-0468-020 | TAI-D118 |
| -10 | UPL240 | | 1-0041-020 | |
| -11 | PL223 | 50 | 1-0009-020 | TAI-A118 |
| -12 | UPL223 | 75 | 1-0050-020 | TAI-D118 |
| -13 | PL240S | 50 | 1-0446-020 | TAI-A118 |
| -14 | UPL240S | 75 | 1-0041-020 | TAI-D118 |
| -15 | UBJ229 | | 1-0488-020 | TAI-123 |
| -16 | UCJ220 | | 1-0494-020 | TAI-D118 |
| -17 | UCJ240 | | 1-0496-020 | |
| -18 | UBJ226 | | 1-0489-020 | |
| -19 | UPLR220 | | 1-0504-020 | TAI-221 |
| -20 | UPLFF220 | | 1-0517-020 | TAI-223 |
| -21 | UBJ220 | | 1-0515-020 | TAI-D118 |

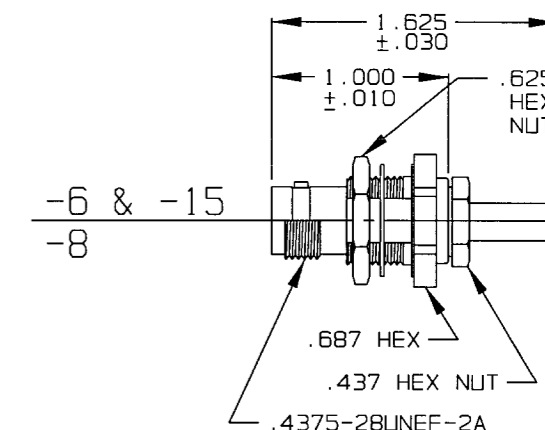
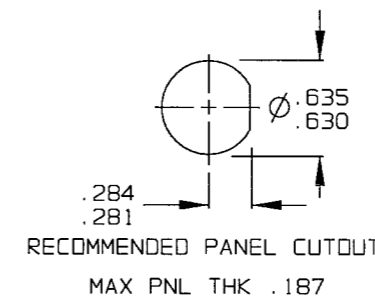
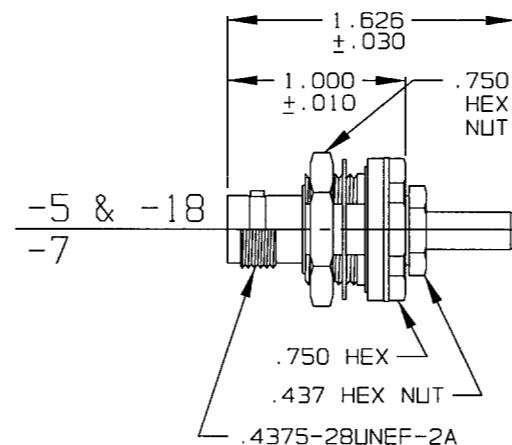
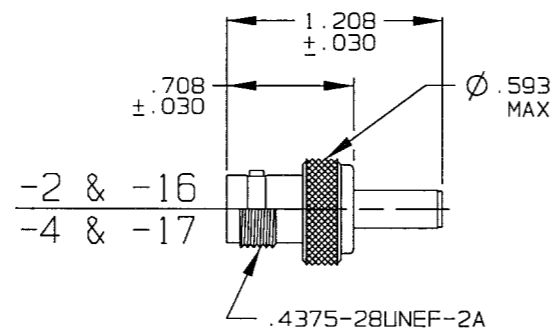
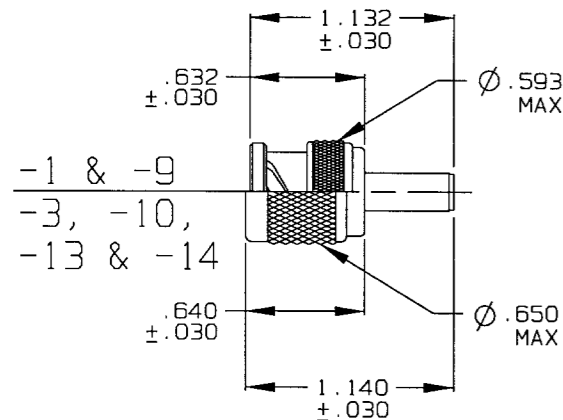
| CENTER CONTACT CRIMP TOOLING | | | |
|------------------------------|--------------------------------------------------------|--------------------------------------------------------------|-------------------------------------|
| CONTACT TYPE | MILITARY 8 POINT INDENTER | COMMERCIAL HEX | COMMERCIAL 8 POINT INDENTER |
| 50 OHM PIN | M22520/1-01 BASIC TOOL WITH TURRET HEAD SELECTOR NO. 6 | TEI CT4L BASIC TOOL WITH TEI CD3-3 DIE, CLOSURE C (.068 HEX) | N/A |
| 50 OHM SOCKET | M22520/1-01 BASIC TOOL WITH TURRET HEAD SELECTOR NO. 6 | TEI CT4L BASIC TOOL WITH TEI CD3-3 DIE, CLOSURE C (.068 HEX) | N/A |
| 75 OHM PIN | N/A | TEI CT4L BASIC TOOL WITH TEI CD3-3 DIE, CLOSURE D (.042 HEX) | TEI 010-0097 8 PT 010-0098 12 PT |
| 75 OHM SOCKET | N/A | TEI CT4L BASIC TOOL WITH TEI CD3-3 DIE, CLOSURE D (.042 HEX) | TEI 010-0088 |

DATA CONTAINED IN THIS DOCUMENT IS PROPRIETARY TO TROMPETER ELECTRONICS INC. AND SHALL NOT BE DISCLOSED, COPIED OR USED FOR PROCUREMENT OR MANUFACTURE WITHOUT EXPRESS WRITTEN PERMISSION OF TROMPETER ELECTRONICS INC.

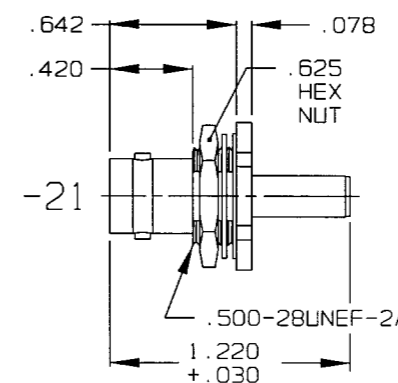
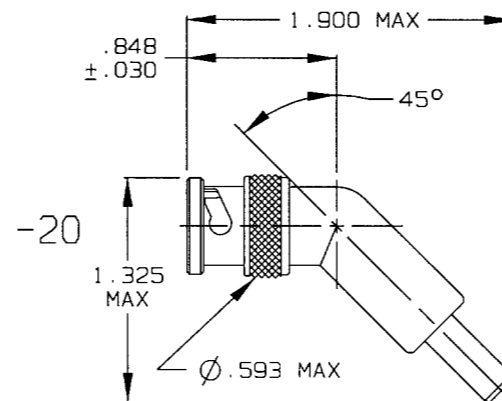
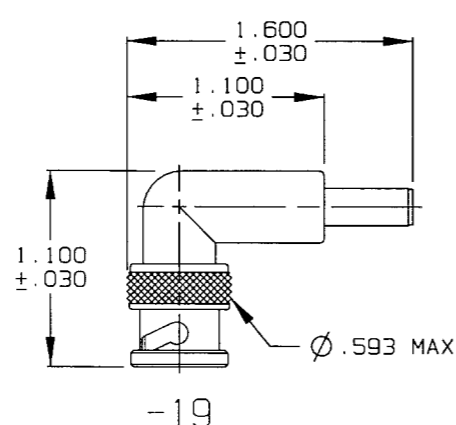
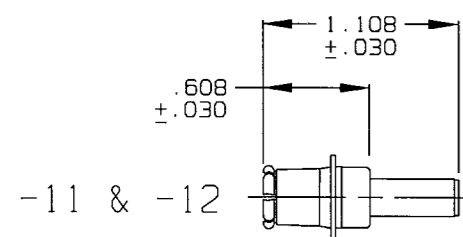
| REVISIONS | | 105-1457 | SH/IC |
|-----------|------------------------|----------|--------------------|
| REV | DESCRIPTION | DATE | APPROVED |
| B | REVISED PER ECD #14077 | 6-15-01 | <i>[Signature]</i> |

| CRIMP SLEEVE TOOLING | | |
|-------------------------|-------------------------------------------------------------------|--------------------------------------------------------------|
| CONNECTOR TYPE | MILITARY HEX | COMMERCIAL HEX |
| 50 OR 75 OHM CONNECTORS | M22520/5-01 BASIC TOOL WITH M22520/5-41 DIE, CLOSURE A (.290 HEX) | TEI CT4L BASIC TOOL WITH TEI CD3-3 DIE, CLOSURE B (.290 HEX) |

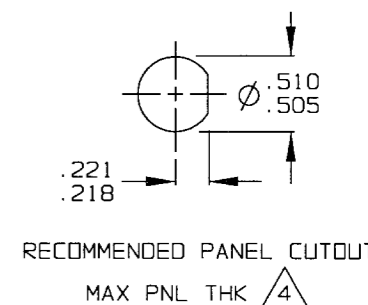
RED INDICATES ORIGINAL



$\triangle 4$.218 THK



$\triangle 4$.100 THK



2. EXAMPLE OF COMPLETE PART NO:

105-1457 - 1

BASIC PART NO. $\triangle 3$ DASH NO (SEE TABLE 1)

1. 50 & 75 OHM FULL CRIMP COAXIAL BNC/TNC CABLE PLUGS/RECEPTACLE/INSULATED & NONINSULATED BULKHEAD MOUNT CABLE RECEPTACLE/PUSH-ON PLUG & 75 OHM BNC/TNC/PUSH-ON FULL CRIMP COAXIAL CABLE PLUG FOR GEPCD CABLE VSD2001TS

$\triangle 3$ REPLACE CRIMP SLEEVE 8-1613-19 WITH CRIMP SLEEVE 8-1613-20

INTERPRET DRAWING PER MIL-STD-100 DIMENSIONS ARE IN INCHES AND INCLUDE FINISH THICKNESS UNLESS OTHERWISE SPECIFIED

TOL: UNLESS SPECIFIED
.XX
.XXX ±.005
.XXXX
ANGLES

DRAWN R L DATE 6/6/01
CHECKED BY *[Signature]*
APPROVED BY *[Signature]*

MATERIAL:
FINISH: TFS-1A (NICKEL)

TROMPETER
ELECTRONICS, INC.

TITLE: 220/240 SERIES-VSD2001TS

NEXT ASSY

CAD FILE NO. 105-1457B1

DO NOT SCALE DWG

| | | | |
|----------|--------------|---------------|----------|
| SIZE | CAGE CODE | DRAWING NO. | REV. |
| B | 14949 | 105-1457 | B |
| SCALE | NONE | DATE: 2/26/93 | SHEET 1C |