



8STA/8TA Fuel Immersible



Features & Benefits

- Continuous immersion without loss of performance
 - Special fuel resistant insert
- Excellent connector sealing on panels by using the jam nut version

Technical characteristics

Mechanical	8STA	8TA
<ul style="list-style-type: none"> • Shell • Shell plating • Insulator • Grommet & seal • Contact • Contact plating • Endurance • Shock • Vibration • Contact retention 	<p style="text-align: center;">Aluminium alloy Conductive black zinc Thermoplastic Fluoroelastomer Copper alloy Gold</p> <p style="text-align: center;">500 matings/unmatings 300 g for 3 ms and EIA-364-27</p> <p style="text-align: center;">147 m/s², 10 to 2000 Hz Size 22D: 45 N / Size 20: 60 N Size 16: 100 N / Size 12: 100 N</p>	<p style="text-align: center;">random 100 to 1000 Hz - 1G²/Hz Size 22D: 45 N</p>
<ul style="list-style-type: none"> • Test voltage • Contact resistance 	<p style="text-align: center;">1300 Vrms</p> <p style="text-align: center;">Size 22D: 14.6 mΩ / Size 20: 7.3 mΩ Size 16: 3.8 mΩ / Size 12: 3.5 mΩ</p>	<p style="text-align: center;">Size 22D: 14.6 mΩ</p>
<ul style="list-style-type: none"> • Insulation resistance at 500 Vdc • Contact rating 	<p style="text-align: center;">≥ 5000 mΩ</p> <p style="text-align: center;">Size 22D: 5 A / Size 20: 7.5 A Size 16: 13 A / Size 12: 23 A</p>	<p style="text-align: center;">Size 22D: 5 A</p>
<ul style="list-style-type: none"> • Shell continuity 	<p style="text-align: center;">≤ 10 mΩ</p>	
<ul style="list-style-type: none"> • Temperature range • Sealing mated connectors • Salt spray 	<p style="text-align: center;">-55°C to +175°C IP67 (1 metre for 30 min. minimum) 48 hours</p>	
<ul style="list-style-type: none"> • Resistance to fluids 	<p>withstands most of Motorsport fluids</p>	



8STA/8TA Fuel Immersible

How to order

Basci series		8STA	0	08	35	P	N	022
		8TA	0	08	35	P	N	022
Shell style	0: Oval flange receptacle 1: In-line receptacle 6: Plug 7: Jam nut receptacle							
Shell size	04 - 08 - 10 - 12 - 14 - 16							
Layouts	See layouts available below							
Contact gender	P: Pin contacts S: Socket contacts							
Orientation	N: Red / A: Yellow / D: Green							
Specification*	022							

*Mandatory

Contact layouts (viewed from front face of male insulator)

Size 04 <div style="display: flex; justify-content: space-around;"> <div style="text-align: center;"> 05 5 #26 Service R </div> <div style="text-align: center;"> 35 3 #22D Service S </div> </div>	Size 08 <div style="display: flex; justify-content: space-around;"> <div style="text-align: center;"> 35 6 #22D Service M </div> <div style="text-align: center;"> 98 3 #20 Service I </div> </div>	Size 10 <div style="display: flex; justify-content: space-around;"> <div style="text-align: center;"> 05 5 #20 Service I </div> <div style="text-align: center;"> 35 13 #22D Service M </div> <div style="text-align: center;"> 98 6 #20 Service I </div> </div>
Size 12 <div style="text-align: center;"> 98 10 #20 Service I </div>	Size 14 <div style="text-align: center;"> 35 37 #22D Service M </div>	Size 16 <div style="text-align: center;"> 08 8 #16 Service II </div>

For both 8STA & 8TA, all others being for 8STA only.



8STA/8TA Fuel Immersible

Range presentation

Plug

Boot termination

ø A

Shell size	ø A max.	B max.	C max.
04	13.55	18.50	7.9
08	18.70	33.50	15
10	21.50		
12	25.10		
14	29.00		
16	32.20		

In-line receptacle

Hand grip
Boot termination

ø A

Shell size	ø A max.	ø D ^{+0.20}	G max.
04	-	10.20	18.15
08	17.60	12.00	33.50
10	20.70	15.00	
12	25.10	19.05	
14	28.30	22.22	
16	31.40	25.40	

Oval flange receptacle

P Panel thickness
Boot termination

L max.
A max.
B
ø C

PANEL CUT OUT

ø A
B
ø C

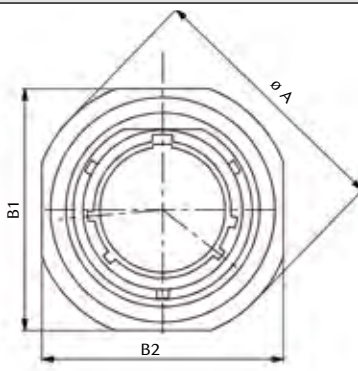
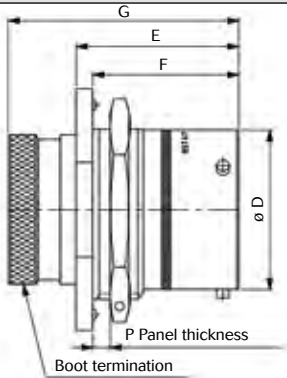
Shell size	A max.	B ^{+0.20}	ø C ^{+0.1} ₀	ø D ^{+0.2} _{-0.13}	E _{-0.15}	F _{-0.13}	G max.	L max.	P max.	PANEL CUT OUT		
										ø A ^{+0.10}	B ^{+0.20}	ø C ^{+0.20}
04	13.20	16.40	2.65	10.20	10.70	9.20	18.30	20.85	2.00	12.00	16.20	3.10
08	16.50	21.40	3.20	12.00	17.21	16.05	33.50	27.20	3.00	14.50	21.40	3.60
10	19.50	25.90		15.00				32.00		17.40	25.90	
12	24.00	29.10		19.05				35.20		21.90	29.10	
14	27.00	32.50		22.22				38.40		25.00	32.50	
16	30.30	34.80		25.40				41.00		28.20	34.80	

Note : all dimensions are in mm

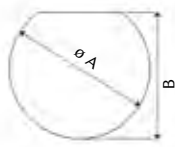


8STA/8TA Fuel Immersible

Jam nut receptacle



PANEL CUT OUT



Shell size	$\phi A^{\pm 0.03}$	$B1-B2^{\pm 0.24}$	$\phi D_{0,12}^0$	$E^{\pm 0.10}$	$F^{\pm 0.24}$	$G^{\pm 0.3}$	P max.	PANEL CUT OUT	
								$\phi A^{\pm 0.10}$	$B^{\pm 0.20}$
04	18.00	20.20	10.20	18.15	16.20	25.75	1.5 to 5.0	13.50	12.80 - 13.00
08	26.90	24.10	11.97	25.91	23.24	36.71	3.00	14.50	13.60
10	30.15	27.30	14.94					17.70	16.80
12	34.89	32.10	19.01					22.70	20.90
14	38.06	34.92	22.18					25.70	24.10
16	41.25	38.40	25.36					28.80	27.20

For other shell sizes, please consult us.