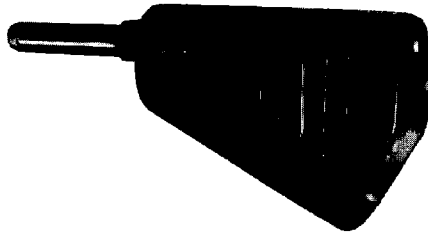
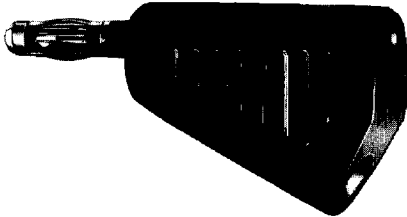


**AZ6/6-4**



**AZ6/6-4F**



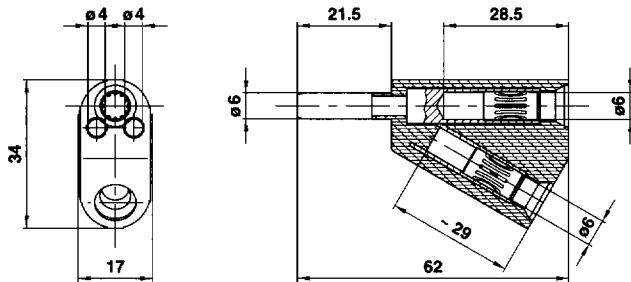
**Branch connector AZ6/6-4 and AZ6/6-4F with rigid plug and spring loaded plug. Spring loaded 6 mm (.236 in) dia. sockets**

Branch connector AZ6/6-4 and AZ6/6-4F serves as measuring adapter and branching point. The plug mates with any spring-loaded 6 mm (.236 in) dia. socket. For measuring and testing duty, the adapter is fitted with two 4 mm (.160 in) dia. rigid sockets. For use as branching point, the adapter is also equipped with two spring-loaded 6 mm dia. sockets. Insulation is made of black polypropylene.

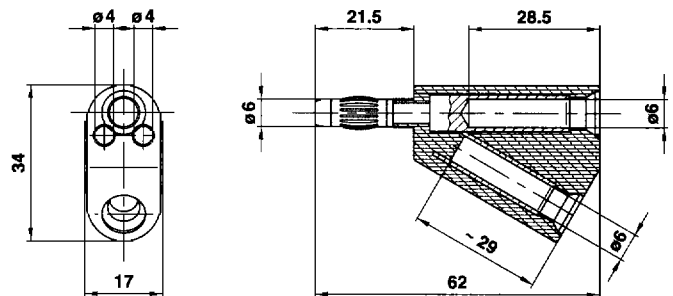
Type	Part #	Conductor cross-section copper mm <sup>2</sup>	Nominal dia. pin/socket mm	Withdrawal force N	Insertion force N	Weight kg	Multiflam™	Rated current (80°C) A	Rated voltage <sup>2</sup> V	Contact resistance μΩ	Short-circuit current 1 s kA	Short-circuit current 3 s kA	Surge current kA	Flashover voltage 50 Hz <sup>2</sup> kV	Test voltage 50 Hz 1 min <sup>2</sup> kV
AZ6/6-4	14.1003	6	6	25	30	0.028	LAIII	80	500	160	1.2	0.7	8.0	3.0	2.5
AZ6/6-4F	14.1005	6	6	25	30	0.028	LAIII	80	500	160	1.2	0.7	8.0	3.0	2.5

Color: 4

**AZ6/6-4**



**AZ6/6-4F**



2) In mated condition only.

- 0 - green/yellow    1 - red    2 - blue    3 - white    4 - black    5 - yellow    6 - green    7 - brown    8 - gray    9 - violet