

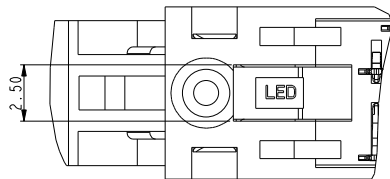


FCI CONFIDENTIAL

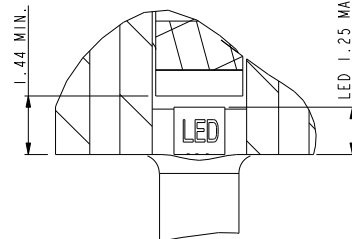
This document is the property of and embodies CONFIDENTIAL and PROPRIETARY information of FCI. No part of the information shown on this document may be used in any way or disclosed to others without the written consent of FCI. Copyright FCI.

REV F: 2006-04-17

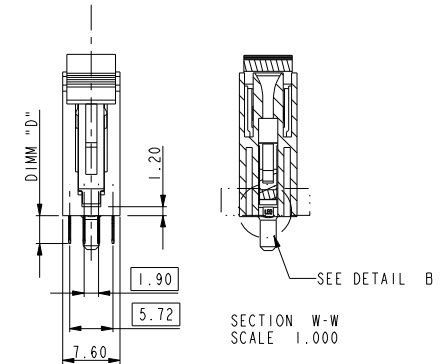
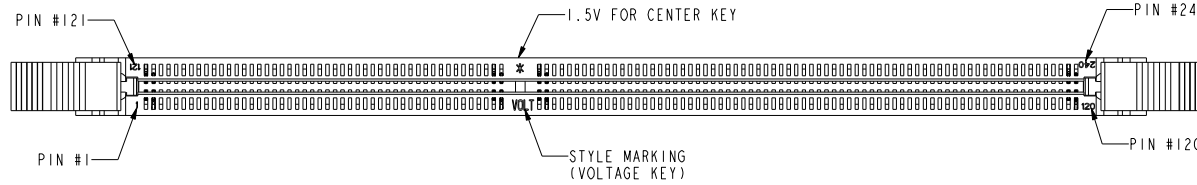
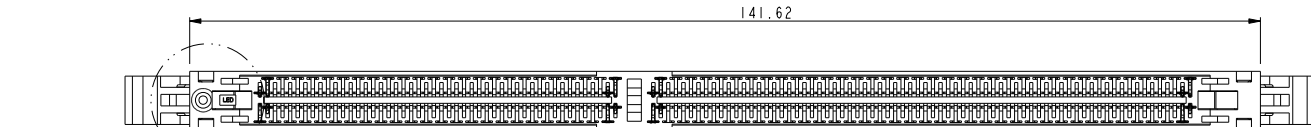
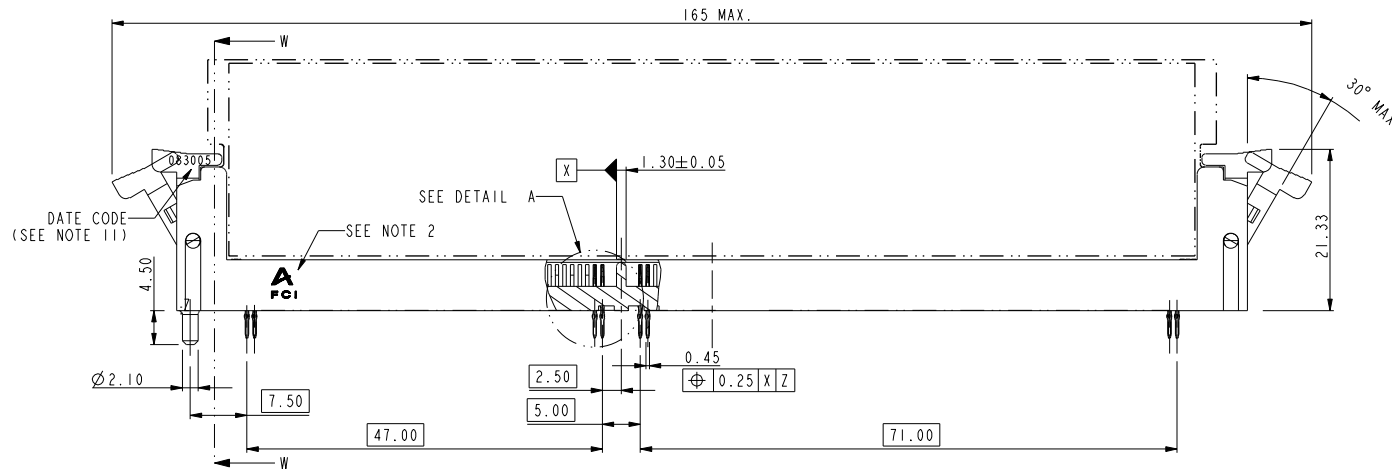
SEE DETAIL C



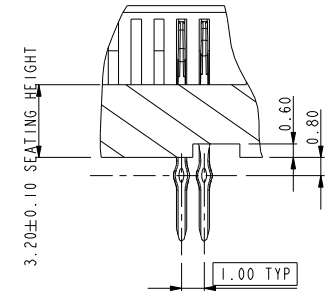
DETAIL C
SCALE 3.000



DETAIL B
SCALE 5.000



TOLERANCES UNLESS OTHERWISE SPECIFIED		
LINEAR	0.X	±0.38
	0.XX	±0.25
	0.XXX	±0.13
ANGULAR	0°	±2°



DETAIL A
SCALE 3.000

Mark with
10087607
REV. B
in area indicated
by X.....

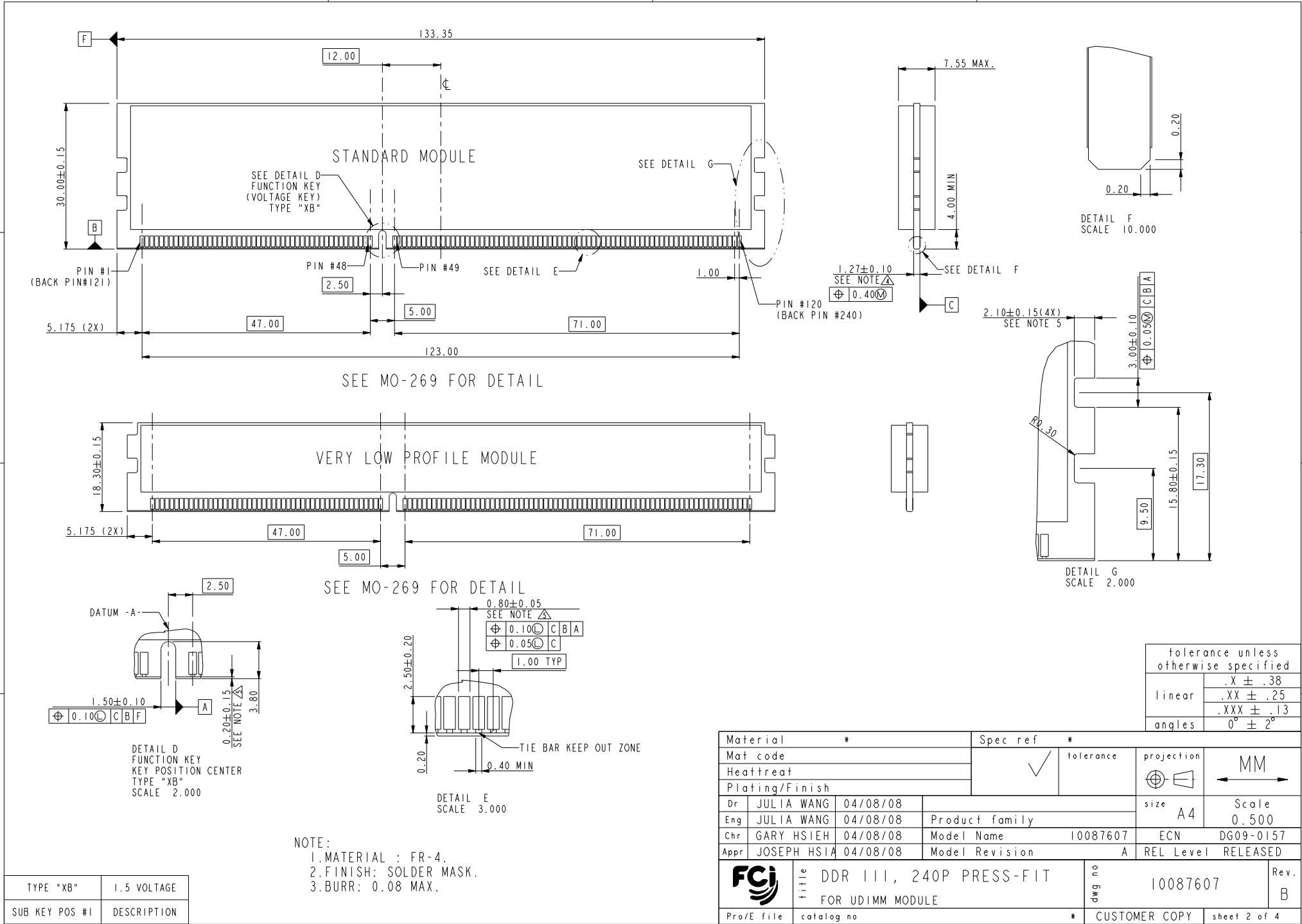
rev	ecn no	dr	date
A	DG08-0083	BL	07/21/08
B	DG09-0157	BL	05/19/09
-	-	-	-
-	-	-	-
-	-	-	-
-	-	-	-

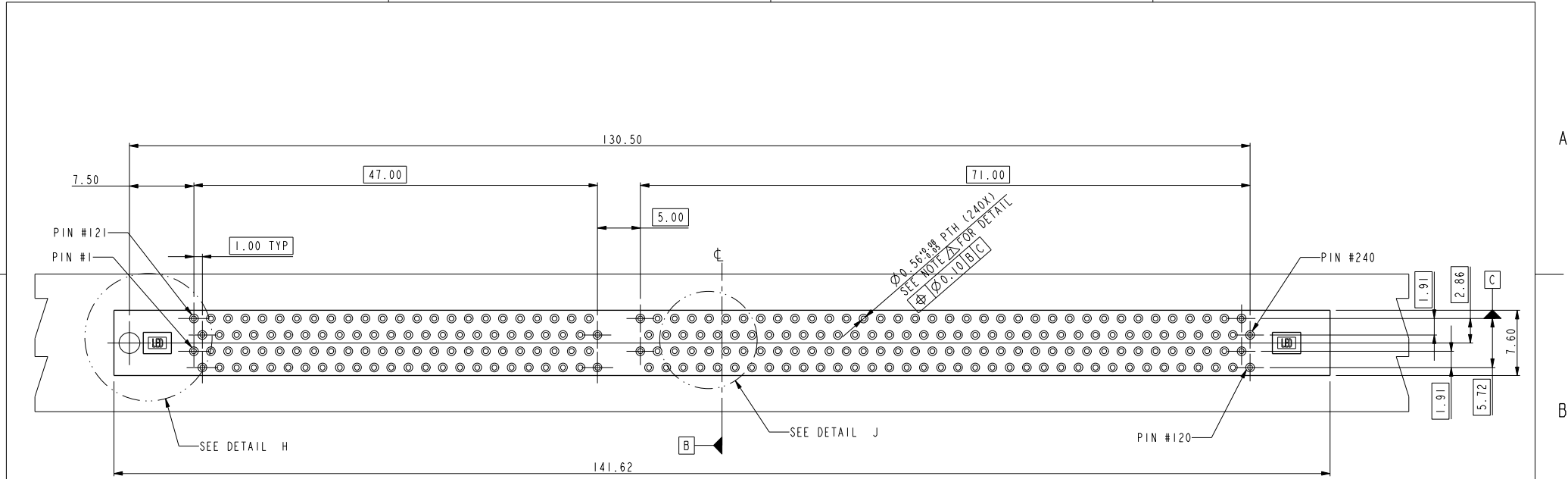
Material		Spec ref		tolerance		projection		MM	
Mat code		Heattreat		Plating/Finish		size		Scale	
Dr		JULIA WANG		04/08/08		A4		0.500	
Eng		JULIA WANG		04/08/08		Product family		ECN	
Chr		GARY HSIEH		04/08/08		Model Name		10087607	
Appr		JOSEPH HSIA		04/08/08		Model Revision		A	
Pro/E file		catalog no		* CUSTOMER COPY		sheet 1 of 4		Rev.	
FCI		title		DDR III, 240P PRESS-FIT FOR UDIMM MODULE		dwg no		10087607	
								B	



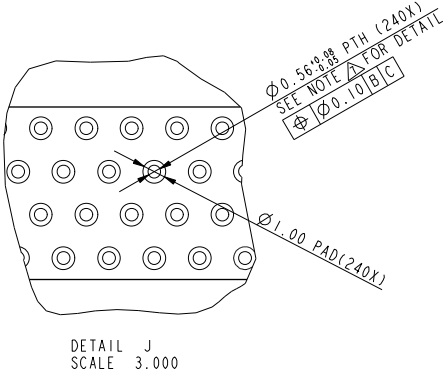
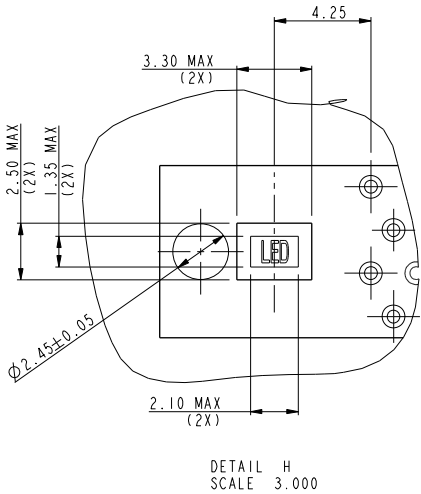
FCI CONFIDENTIAL

This document is the property of and embodies CONFIDENTIAL and PROPRIETARY information of FCI. No part of the information shown on this document may be used in any way or disclosed to others without the written consent of FCI. Copyright FCI.






RECOMMENDED CIRCUIT BOARD HOLE LAYOUT



tolerance unless otherwise specified	
linear	.X ± .38 .XX ± .25 .XXX ± .13
angles	0° ± 2°

Material *			Spec ref *			
Mat code			✓	tolerance	projection	MM ↔
Heattreat						
Plating/Finish						
Dr	JULIA WANG	04/08/08			size A4	Scale 0.500
Eng	JULIA WANG	04/08/08	Product family			
Chr	GARY HSIEH	04/08/08	Model Name 10087607		ECN	DG09-0157
Appr	JOSEPH HSIA	04/08/08	Model Revision A		REL Level	RELEASED
		title DDR III, 240P PRESS-FIT FOR UDIMM MODULE			dwg no 10087607	Rev. B
Pro/E file		catalog no		*	CUSTOMER COPY	sheet 3 of 4



FCI CONFIDENTIAL

This document is the property of and embodies CONFIDENTIAL and PROPRIETARY information of FCI. No part of the information shown on this document may be used in any way or disclosed to others without the written consent of FCI. Copyright FCI.

REV F: 2006-04-17

NOTE:

- 1. MATERIAL:
HOUSING: HIGH PERFORMANCE RESINS, GLASS FILLED UL94V-0 RATED, COLOR: BLACK.
EJECTOR: HIGH PERFORMANCE RESINS, GLASS FILLED UL94V-0 RATED, COLOR: NATURAL.
TERMINAL: COPPER ALLOY.
- 2. FCI LOGO TO BE APPROXIMATELY LOCATED AS SHOWN ON PRINT.
- 3. PRODUCT SPECIFICATION: GS-12-617
- 4. CARD THICKNESS APPLIES ACROSS TABS AND INCLUDES PLATING AND / OR METALIZATION.
- 5. LEADING EDGE OF CONTACT PADS SPECIFIED BY THE KEEP OUT ZONE SHALL BE FREE OF BURRS AND EXTERNAL TIE BARS.
FOR OPTIMUM PERFORMANCE, THE TIE BAR IS TO BE ON AN INTERNAL LAYER SO THAT THE REMNANT CANNOT CAUSE CONTACT DAMAGE.
- 6. PACKAGING SPECIFICATION: GS-14-528.
- 7. ALL PTH SHOULD BE 0.66mm DIA DRILLED AND 0.025mm MIN. ELECTRO-DEPOSITED COPPER THK ON THROUGH HOLE WALL.
- 8. THIS PRODUCT MEETS EUROPEAN UNION DIRECTIVES AND OTHER COUNTRY REGULATIONS AS DESCRIBED IN GS-22-008.
- 9. THE HOUSING WILL WITHSTAND EXPOSURE TO 260°C PEAK TEMPERATURE FOR 10 SECONDS IN A WAVE SOLDER APPLICATION.
- 10. THE AMBER EJECTOR CAN WITHSTAND MAX 174°C EXPOSURE TEMPERATURE

DATE CODE: X X X X X X

YEAR
DATE
MONTH

10087607-

STYLE: MECHANICAL KEYING
I : 1.5 VOLT. W/CENTER KEY #I

REVISE
0

TAIL LENGTH

CODE	DIM. "D"
0	3.30
1	3.70
2	4.20

PLATING

CODE	CONTACT	TAIL AREA	UNDERPLATE	CODE	CONTACT	TAIL AREA	UNDERPLATE
2B	15u"(0.38um) MIN. GOLD	35u"~100u" Tin/Lead PLATING	50u"(1.27um) MIN. NICKEL OVERALL	2LF	15u"(0.38um) MIN. GOLD	35u"~100u" Tin PLATING	50u"(1.27um) MIN. NICKEL OVERALL
3B	30u"(0.76um) MIN. GOLD			3LF	30u"(0.76um) MIN. GOLD		
4B	3u"(0.076um) MIN. GOLD			4LF	3u"(0.076um) MIN. GOLD		
6B	15u"(0.38um) MIN. GOLD (LUBRICATED)	35u"~100u" Tin/Lead PLATING	50u"(1.27um) MIN. NICKEL OVERALL	6LF	15u"(0.38um) MIN. GOLD (lubricated)	35u"~100i" Tin PLATING	50u"(1.27um) MIN. NICKEL OVERALL
7B	30u"(0.76um) MIN. GOLD (LUBRICATED)			7LF	30u"(0.76um) MIN. GOLD (LUBRICATED)		
8B	3u"(0.076um) MIN. GOLD (LUBRICATED)			8LF	3u"(0.076um) MIN. GOLD (LUBRICATED)		

COLOR OF HOUSING AN EJECTOR

0 : BLACK HOUSING + IVORY EJECTOR
1 : BLACK HOUSING + AMBER COLOR EJECTOR
2 : BLACK HOUSING + BLACK EJECTOR
3 : IVORY HOUSING + IVORY EJECTOR
4 : BLUE HOUSING + IVORY EJECTOR

Material *			Spec ref *		
Mat code			tolerance	projection	MM
Heat treat					
Plating/Finish					
Dr	JULIA WANG	04/08/08	size A4		
Eng	JULIA WANG	04/08/08	Product family		
Chr	GARY HSIEH	04/08/08	Model Name 10087607		
Appr	JOSEPH HSIA	04/08/08	Model Revision A		
FCI			title DDR III, 240P PRESS-FIT FOR UDIMM MODULE		dwg no 10087607
Pro/E file			catalog no	* CUSTOMER COPY	sheet 4 of 4

ECN DG09-0157
REL Level RELEASED
Rev. B