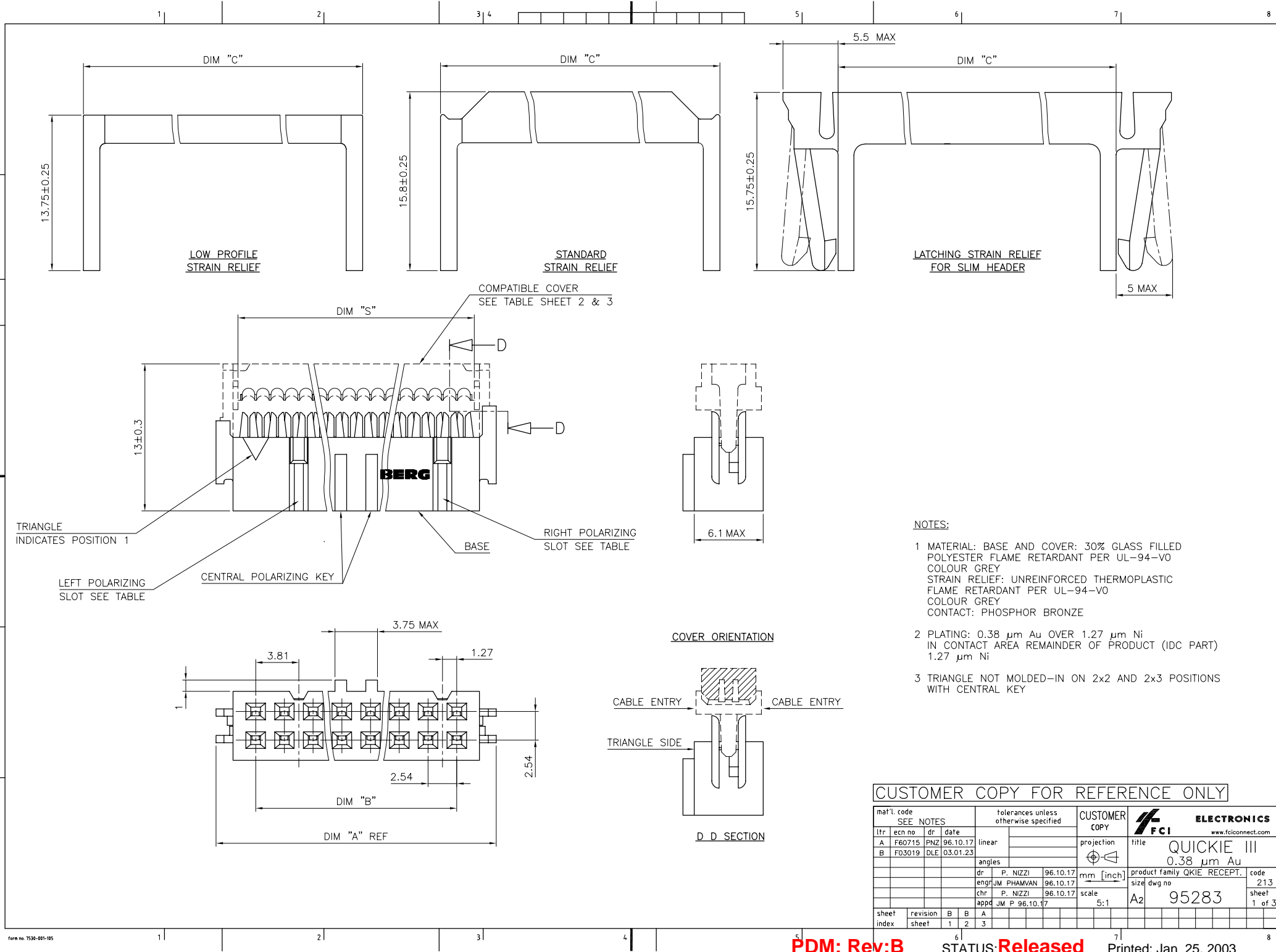


THIS DRAWING IS THE PROPERTY OF FCI. IT IS TO BE USED FOR THE MANUFACTURE OF THE PRODUCT SPECIFIED HEREIN ONLY. IT IS NOT TO BE REPRODUCED OR TRANSMITTED IN ANY FORM OR BY ANY MEANS, ELECTRONIC OR MECHANICAL, INCLUDING PHOTOCOPYING, RECORDING, OR BY ANY INFORMATION STORAGE AND RETRIEVAL SYSTEM, WITHOUT THE WRITTEN PERMISSION OF FCI.



FCI is a registered trademark of FCI. All other trademarks are the property of their respective owners. FCI is not responsible for any errors or omissions in this drawing. FCI is not responsible for any damage or loss of data resulting from the use of this drawing.

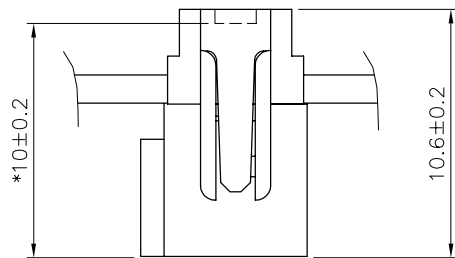


- NOTES:**
- 1 MATERIAL: BASE AND COVER: 30% GLASS FILLED POLYESTER FLAME RETARDANT PER UL-94-V0
COLOUR GREY
STRAIN RELIEF: UNREINFORCED THERMOPLASTIC FLAME RETARDANT PER UL-94-V0
COLOUR GREY
CONTACT: PHOSPHOR BRONZE
 - 2 PLATING: 0.38 μ m Au OVER 1.27 μ m Ni
IN CONTACT AREA REMAINDER OF PRODUCT (IDC PART)
1.27 μ m Ni
 - 3 TRIANGLE NOT MOLDED-IN ON 2x2 AND 2x3 POSITIONS WITH CENTRAL KEY

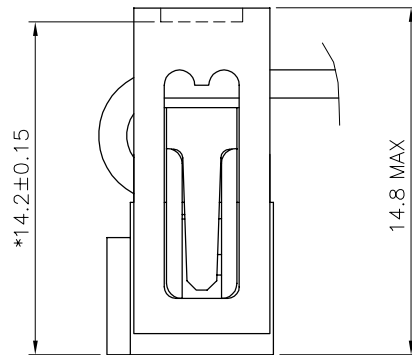
CUSTOMER COPY FOR REFERENCE ONLY									
mat'l. code		SEE NOTES		tolerances unless otherwise specified		CUSTOMER COPY		FCI ELECTRONICS	
ltr	ec'n no	dr	date	linear		projection	title	product family	code
A	F60715	PNZ	96.10.17				QUICKIE III	0.38 μ m Au	213
B	F03019	DLE	03.01.23					product family QKIE RECEPT.	sheet
				angles		mm [inch]		size dwg no	1 of 3
				dr	P. NIZZI	96.10.17			
				eng'n	JM PHAMVAN	96.10.17			
				chr	P. NIZZI	96.10.17			
				app'd	JM P	96.10.17			
sheet index	revision	B	B	A		scale	5:1	A2	95283
		1	2	3					

PRODUCT NUMBER	SIZE	DIM "A"	DIM "B"	DIM "C"	SLOT STYLE
95283-X04	2x 2	9.54	2.54	9.46	NO SLOT
95283-X06	2x 3	12.08	5.08	12.00	RIGHT IF NO KEY
95283-X08	2x 4	14.62	7.62	14.54	RIGHT IF NO KEY
95283-X10	2x 5	17.16	10.16	17.08	RIGHT SLOT
95283-X14	2x 7	22.24	15.24	22.16	RIGHT SLOT
95283-X16	2x 8	24.78	17.78	24.70	2 SLOTS
95283-X18	2x 9	27.32	20.32	27.24	2 SLOTS
95283-X20	2x 10	29.86	22.86	29.78	2 SLOTS
95283-X24	2x 12	34.94	27.94	34.85	2 SLOTS
95283-X26	2x 13	37.48	30.48	37.40	2 SLOTS
95283-X30	2x 15	42.56	35.56	42.48	2 SLOTS
95283-X34	2x 17	47.64	40.64	47.56	2 SLOTS
95283-X40	2x 20	55.26	48.26	55.18	2 SLOTS
95283-X44	2x 22	60.34	53.34	60.26	2 SLOTS
95283-X50	2x 25	67.96	60.96	67.88	2 SLOTS
95283-X60	2x 30	80.66	73.66	80.58	2 SLOTS
95283-X64	2x 32	85.74	78.74	85.66	2 SLOTS

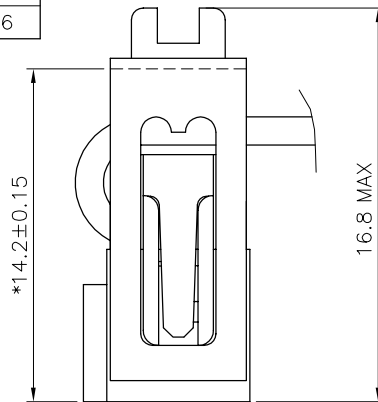
COMPATIBLE COVER	DIM "S"
67015-004F	5.66
67015-006F	8.20
67015-008F	10.74
67015-010F	13.28
67015-014F	18.36
67015-016F	20.90
67015-018F	23.44
67015-020F	25.98
67015-024F	31.06
67015-026F	33.60
67015-030F	38.68
67015-034F	43.76
67015-040F	51.38
67015-044F	56.46
67015-050F	64.08
67015-060F	76.78
67015-064F	81.86



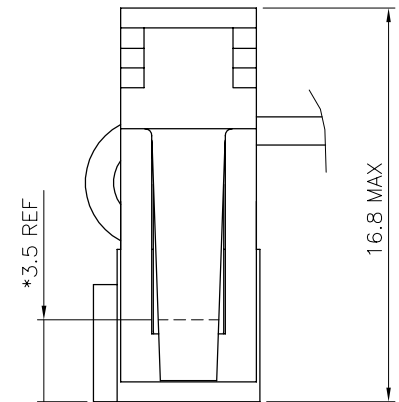
WITHOUT STRAIN RELIEF



WITH LOW PROFILE STRAIN RELIEF



WITH STANDARD STRAIN RELIEF



WITH LATCHING STRAIN RELIEF

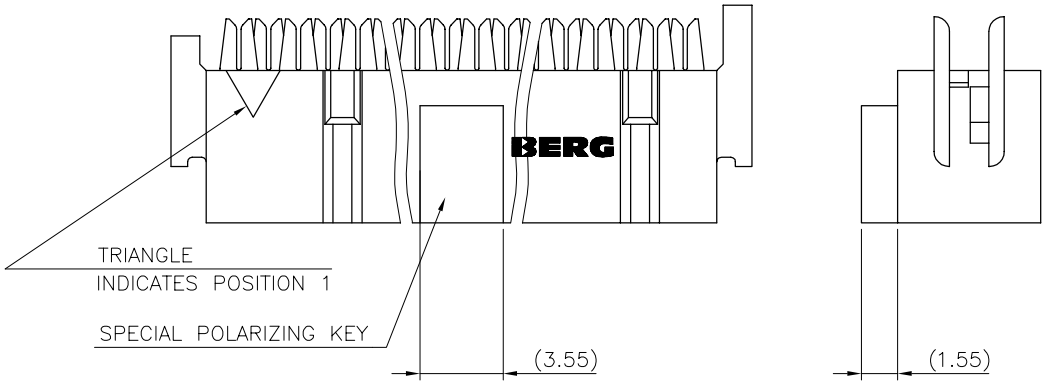
AFTER TERMINATION SIDE VIEW OF ASSEMBLY (* LATCHING DIM ON HEADER)

95283-7YY		●				●	724
95283-6YY	●					●	624
95283-5YY		●			●		504 524 530
95283-4YY		●		●			
95283-3YY		●	●				304
95283-2YY	●				●		204 224 230
95283-1YY	●			●			
95283-0YY	●		●				004
PRODUCT NUMBER	WITH CENTRAL KEY	WITHOUT CENTRAL KEY	STANDARD	WITHOUT	LOW PROFILE	LATCHING	DASHES NOT AVAILABLE
STRAIN RELIEF							

mat'l. code				tolerances unless otherwise specified				CUSTOMER COPY	FCI ELECTRONICS			
ltr	ecr no	dr	date	linear				projection	www.fciconnect.com			
A	F60715	PNZ	96.10.17					⊕	QUICKIE III			
B	F03019	DLE	03.01.23	angles					0.38 μm Au			
				dr	P. NIZZI	96.10.17		mm [inch]	product family QKIE RECEPT.			
				engr	JM PHAMVAN	96.10.17			size dwg no			
				chr	P. NIZZI	96.10.17		scale	A2			
				appd	JM P	96.10.17		N/A	95283			
sheet index	revision	sheet										



PRODUCT NUMBER	SIZE	DIM "A"	DIM "B"	DIM "C"	SLOT STYLE
95283-X04K	2x 2	9.54	2.54	9.46	NO SLOT
95283-X06K	2x 3	12.08	5.08	12.00	RIGHT IF NO KEY
95283-X08K	2x 4	14.62	7.62	14.54	RIGHT IF NO KEY
95283-X10K	2x 5	17.16	10.16	17.08	RIGHT SLOT
95283-X14K	2x 7	22.24	15.24	22.16	RIGHT SLOT
95283-X16K	2x 8	24.78	17.78	24.70	2 SLOTS
95283-X18K	2x 9	27.32	20.32	27.24	2 SLOTS
95283-X20K	2x 10	29.86	22.86	29.78	2 SLOTS
95283-X24K	2x 12	34.94	27.94	34.85	2 SLOTS
95283-X26K	2x 13	37.48	30.48	37.40	2 SLOTS
95283-X30K	2x 15	42.56	35.56	42.48	2 SLOTS
95283-X34K	2x 17	47.64	40.64	47.56	2 SLOTS
95283-X40K	2x 20	55.26	48.26	55.18	2 SLOTS
95283-X44K	2x 22	60.34	53.34	60.26	2 SLOTS
95283-X50K	2x 25	67.96	60.96	67.88	2 SLOTS
95283-X60K	2x 30	80.66	73.66	80.58	2 SLOTS
95283-X64K	2x 32	85.74	78.74	85.66	2 SLOTS

COMPATIBLE COVER	DIM "S"
67015-004F	5.66
67015-006F	8.20
67015-008F	10.74
67015-010F	13.28
67015-014F	18.36
67015-016F	20.90
67015-018F	23.44
67015-020F	25.98
67015-024F	31.06
67015-026F	33.60
67015-030F	38.68
67015-034F	43.76
67015-040F	51.38
67015-044F	56.46
67015-050F	64.08
67015-060F	76.78
67015-064F	81.86



SPECIAL KEY PRODUCT

95283-6YYK	●					●	624
95283-2YYK	●				●		204 224 230
95283-1YYK	●			●			
95283-0YYK	●		●				004
PRODUCT NUMBER	WITH CENTRAL KEY	WITHOUT CENTRAL KEY	STANDARD	WITHOUT	LOW PROFILE	LATCHING	DASHES NOT AVAILABLE
STRAIN RELIEF							

mat'l. code SEE SHEET 1				tolerances unless otherwise specified				CUSTOMER COPY		 ELECTRONICS www.fciconnect.com	
ltr	ecm no	dr	date	linear					projection 	title	
A	F60715	PNZ	96.10.17							QUICKIE III 0.38 μm Au	
				angles					mm [inch]	product family QKIE RECEPT.	
				dr	P. NIZZI	96.10.17				code	
				engr	JM PHAMVAN	96.10.17			213		
				chr	P. NIZZI	96.10.17	scale		sheet		
				appd	JM P	6.10.17	N/A		3 of -		
sheet index		revision sheet									