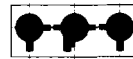


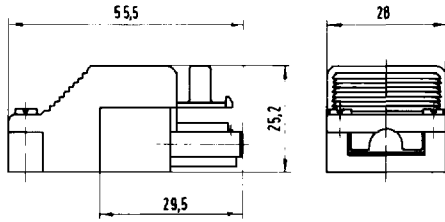
ST 18/3poles Male parts

black/white green

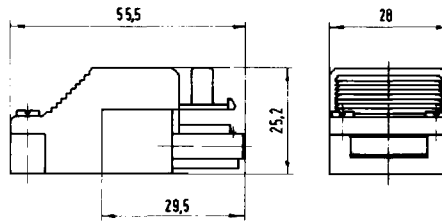
coding



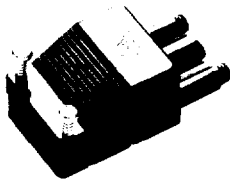
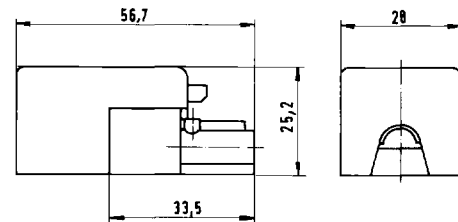
double screw connector
strain relief for one round cable
diameter 6.5–8.3 mm



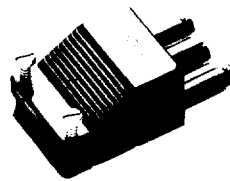
double screw connector
strain relief for two round cables
diameter 4.5–10.0 mm
or one flat cable



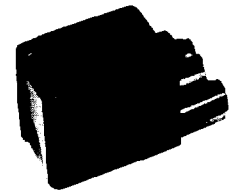
double screw connector
strain relief for one round cable
diameter 6.5–8.3 mm



male part assembled
with strain relief without locking device
black **93.732.6353.0** 100
white **93.732.6350.0** 100



male part assembled
with strain relief without locking device
black **93.632.6353.0** 100
white **93.632.6350.0** 100



female part assembled
with strain relief without locking device
black **93.733.3353.0** 100
white **93.733.3350.0** 100

male part assembled
with strain relief with locking device
black **93.732.7353.0** 100
white **93.732.7350.0** 100

male part assembled
with strain relief with locking device
black **93.632.7353.0** 100
white **93.632.7350.0** 100

female part assembled
with strain relief with locking device
black **93.733.4353.0** 100
white **93.733.4350.0** 100

male part unassembled
with strain relief without locking device
black **93.932.6353.0** 200
white **93.932.6350.0** 200

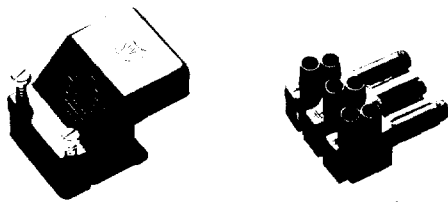
male part unassembled
with strain relief without locking device
black **93.832.6353.0** 200
white **93.832.6350.0** 200

female part unassembled
with strain relief without locking device
black **93.933.3353.0** 200
white **93.933.3350.0** 200

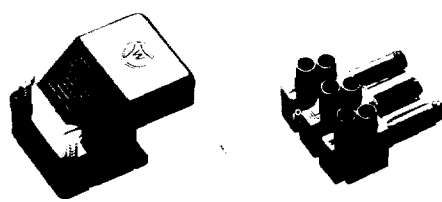
male part unassembled
with strain relief with locking device
black **93.932.7353.0** 200
white **93.932.7350.0** 200

male part unassembled
with strain relief with locking device
black **93.832.7353.0** 200
white **93.832.7350.0** 200

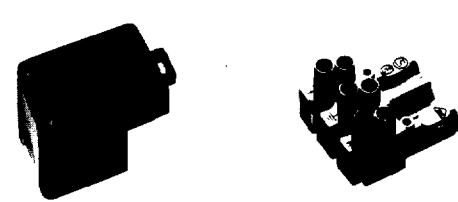
female part unassembled
with strain relief with locking device
black **93.933.4353.0** 200
white **93.933.4350.0** 200



male part
black **93.032.6353.0** 200
white **93.032.6350.0** 200



male part
black **93.032.6353.0** 200
white **93.032.6350.0** 200



female part
black **93.031.3353.0** 200
white **93.031.3350.0** 200

strain relief complete with top and bottom part
without locking device
black **Z7.410.8253.0** 200
white **Z7.410.8250.0** 200

strain relief complete with top and bottom part
without locking device
black **Z7.410.5253.0** 200
white **Z7.410.5250.0** 200

strain relief complete with top and bottom part
without locking device
black **Z7.419.2453.0** 200
white **Z7.419.2453.2** 200

strain relief complete with top and bottom part
with locking device
black **Z7.410.3453.0** 200
white **Z7.410.3450.0** 200

strain relief complete with top and bottom part
with locking device
black **Z7.410.3353.0** 200
white **Z7.410.3350.0** 200 8,2

strain relief complete with top and bottom part
with locking device
black **Z7.419.2253.0** 200
white **Z7.419.2253.2** 200